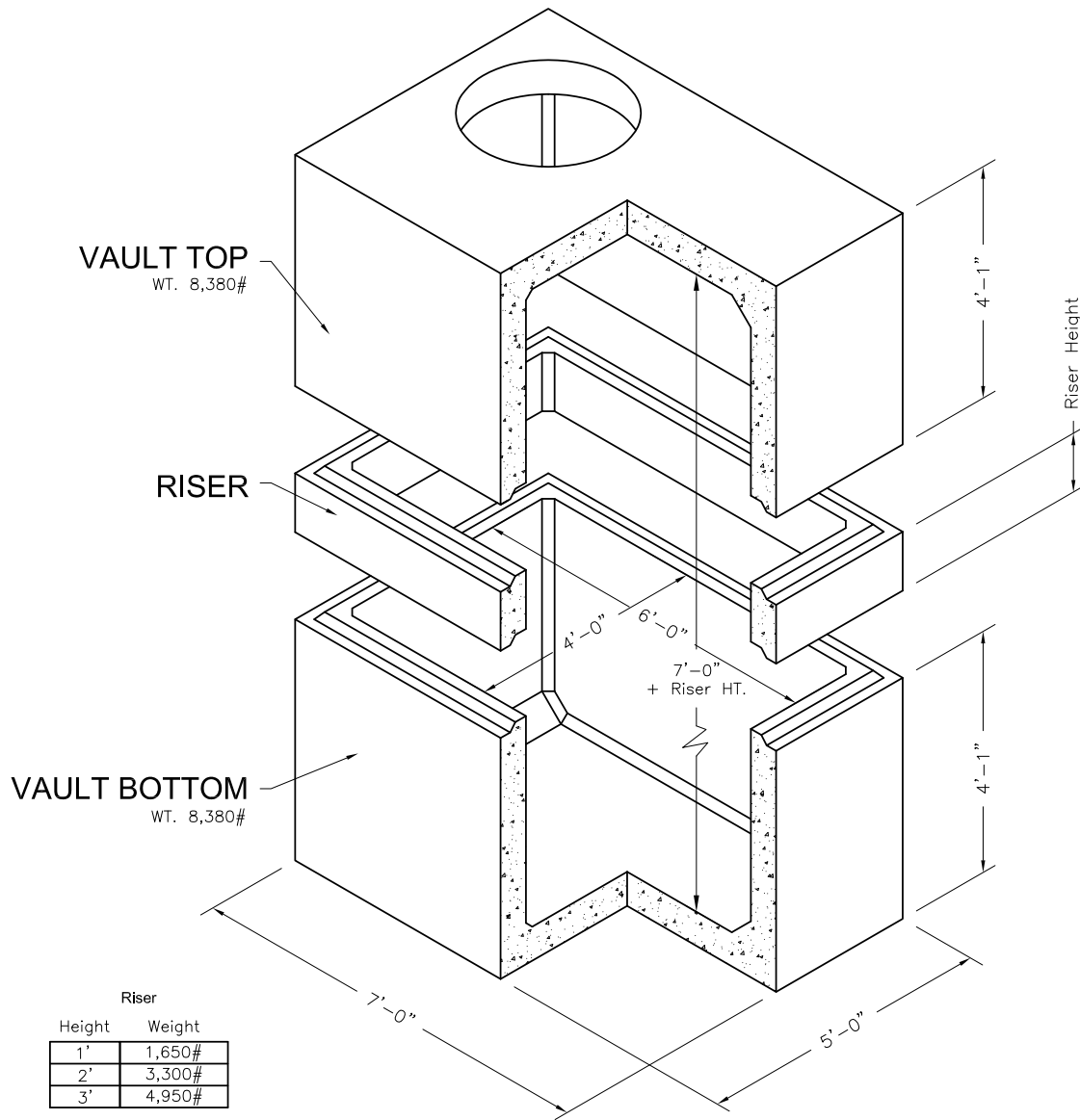
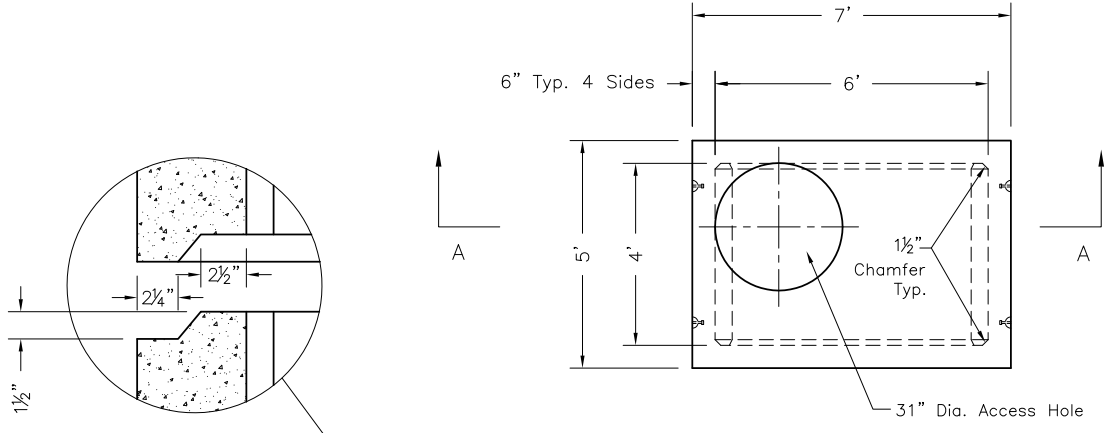


4'x6' Vault

4'x6' Utility Vault
Bases, Risers and Tops

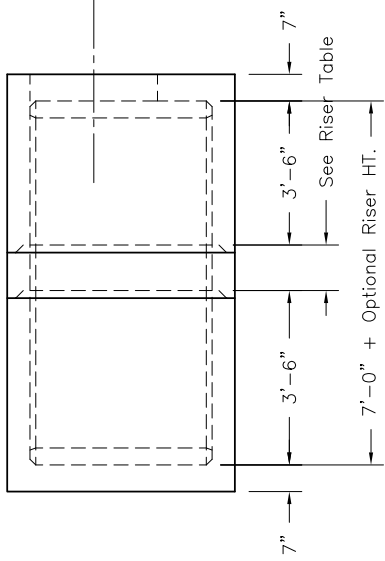


NOTES:
1. Vault design complies with ASTM C-857 and C-858 with less than 2' of earth cover and ar AASHTO HS-20 loading.
2. Lifting insert type and location may change without notice.

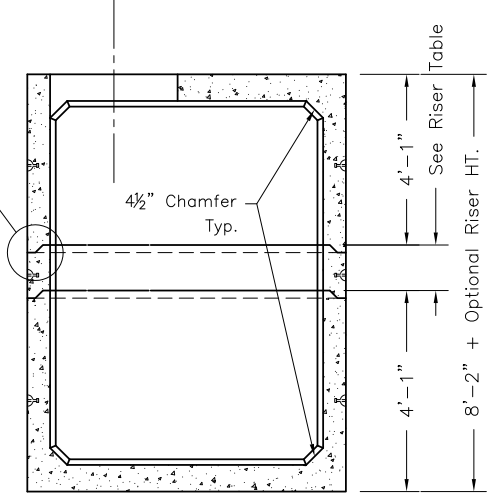


JOINT DETAIL

PLAN VIEW



LEFT SIDE VIEW



SECTION A-A

Oldcastle Precast
 801 West 12th Street
 Ogden, Utah 84404

Phone: (801) 399-1171
 Fax: (801) 392-7849

For more information about our products, please visit
oldcastleprecast.com

oldcastleprecast.com