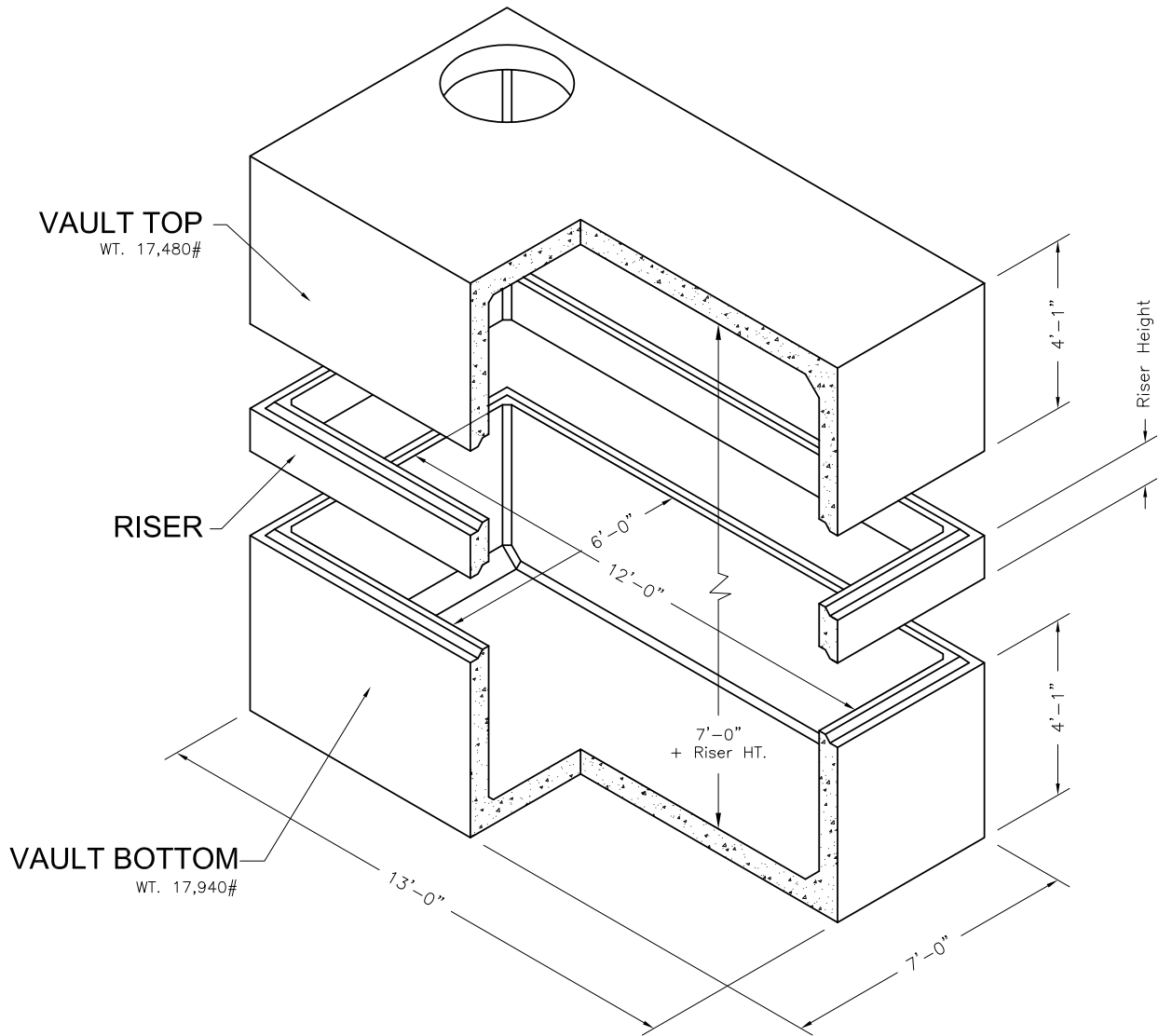


**6'x12'
Vault**

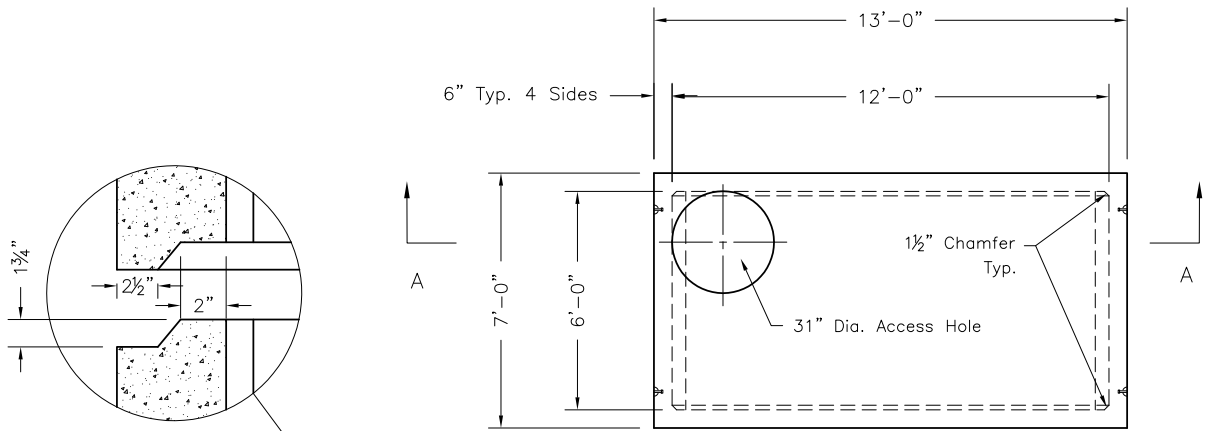
6'x12' Utility Vault
Bottom, Riser and Top



Riser

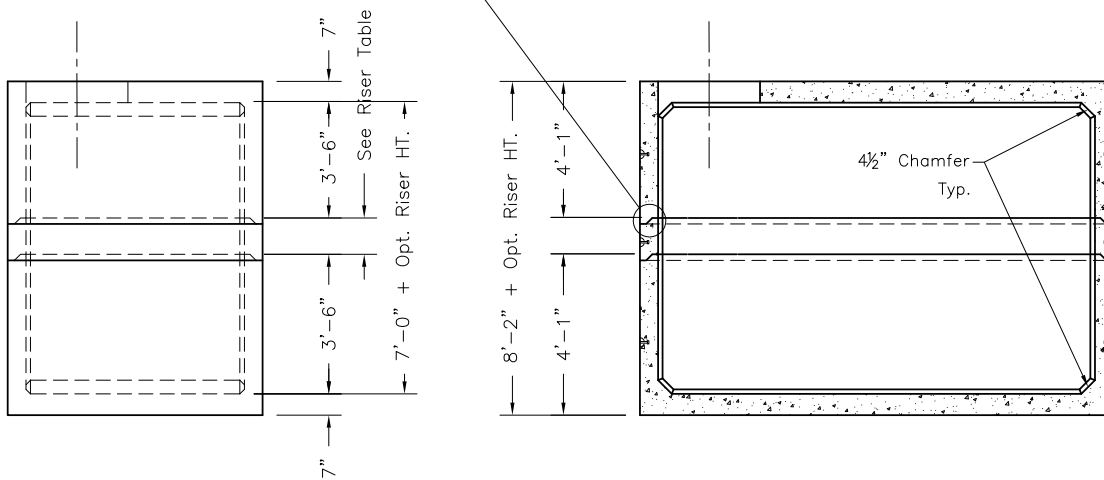
Height	Weight
1'	2,700#
2'	5,400#
3'	8,100#

- NOTES:
1. Vault design complies with ASTM C-857 and C-858 with less than 2' of earth cover and ar AASHTO HS-20 loading.
 2. Lifting insert type and location may change without notice.



JOINT DETAIL

PLAN VIEW



LEFT SIDE VIEW

SECTION A-A

Oldcastle Precast
 801 West 12th Street
 Ogden, Utah 84404

Phone: (801) 399-1171
 Fax: (801) 392-7849

For more information about our products, please visit
oldcastleprecast.com

oldcastleprecast.com