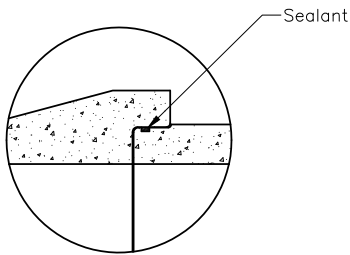
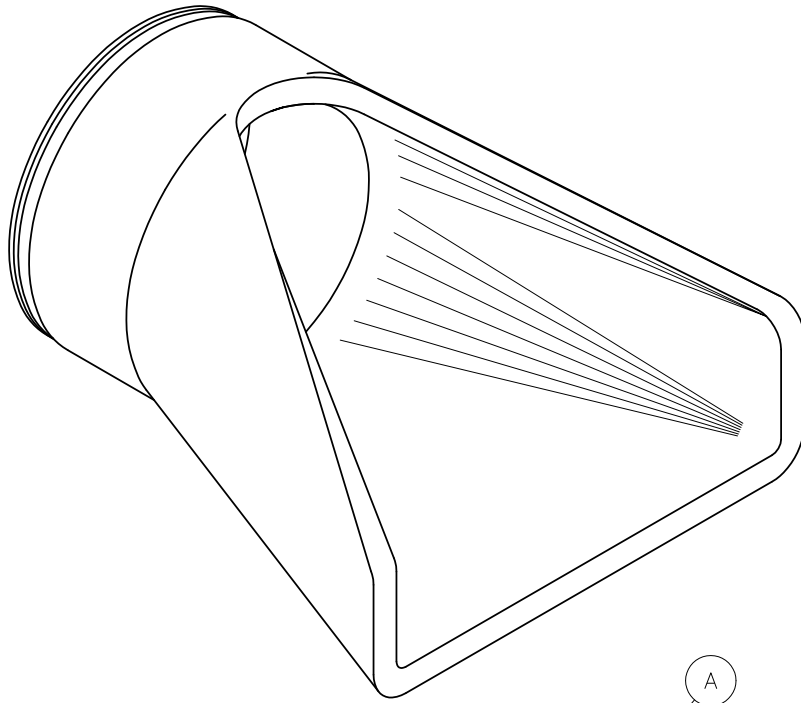


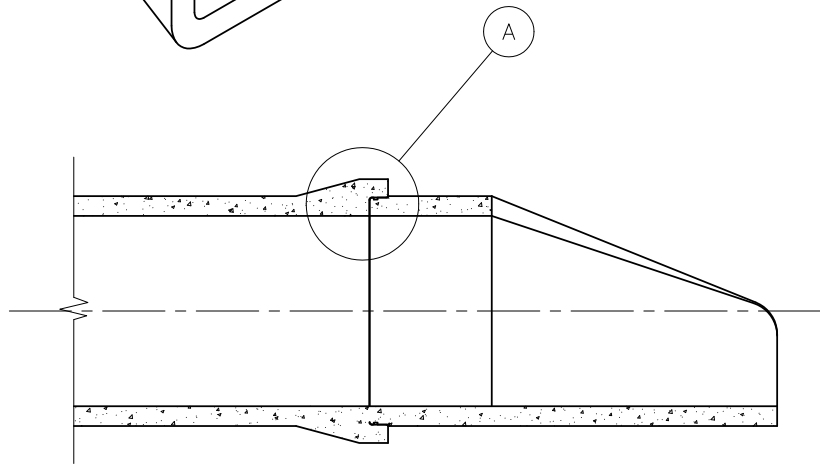
**Flared  
End**

*Flared End Section  
for Round Pipe*



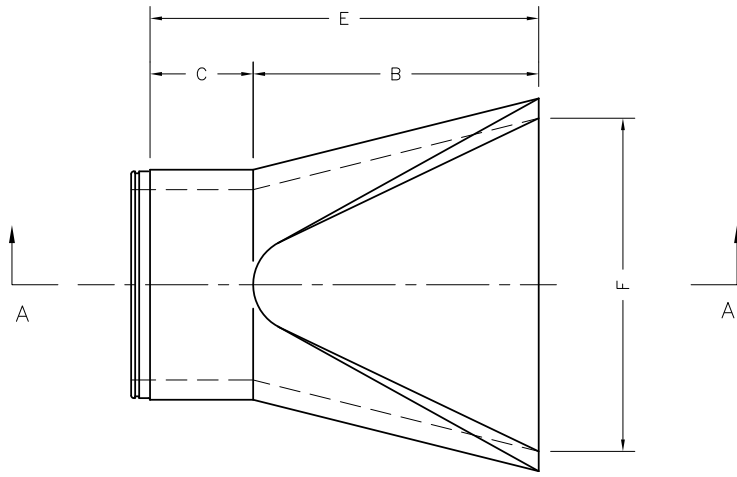
**DETAIL A**

Sealant Detail  
Check CP110 and CP120  
for Specific Joint Details

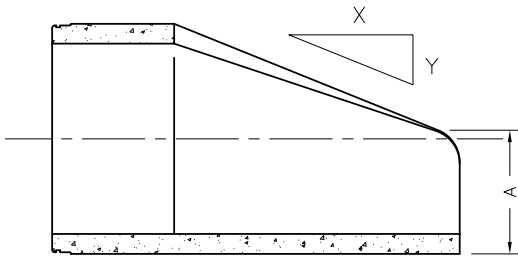


**ASSEMBLED SECTION**

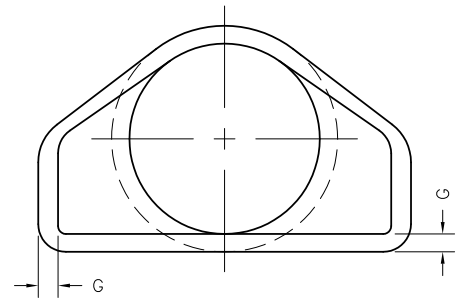
Diameter	Code	Weight
12"	FES12S	530#
15"	FES15S	740#
18"	FES18S	990#
24"	FES24S	1,540#
30"	FES30S	2,190#
36"	FES36S	4,100#
42"	FES42S	5,380#
48"	FES48S	6,550#



PLAN VIEW



SECTION A-A

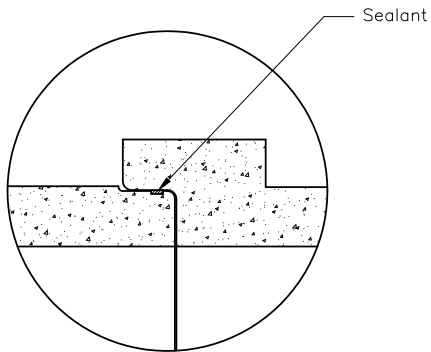
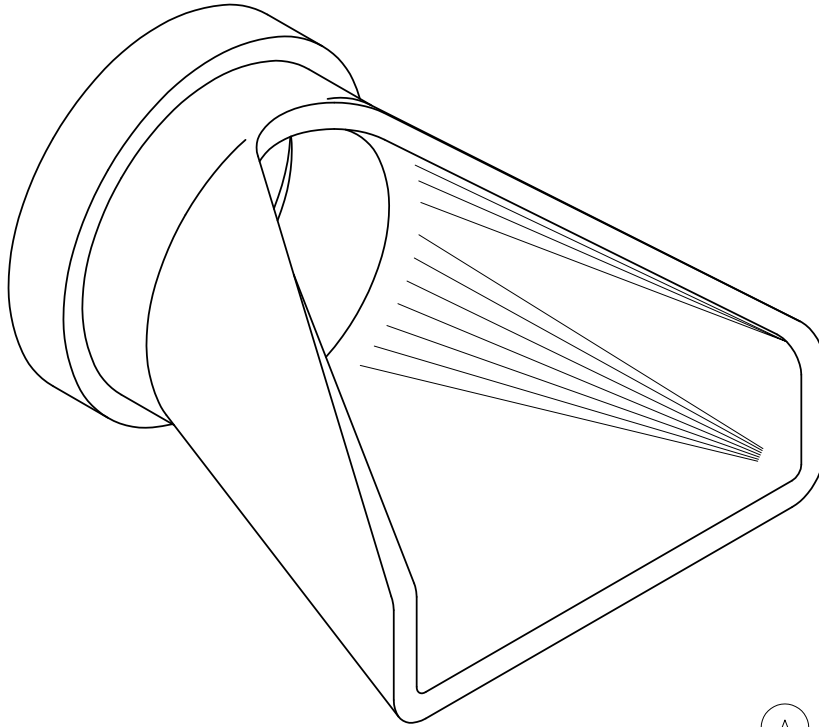


END VIEW

Diam.	Slope		A	B	C	E	F	G
	X : Y							
12"	2.4 : 1		4"	24"	48 <sup>8</sup> / <sub>8</sub> "	72 <sup>8</sup> / <sub>8</sub> "	24"	2"
15"	2.4 : 1		6"	27"	46"	73"	30"	2 <sup>1</sup> / <sub>4</sub> "
18"	2.3 : 1		9"	27"	46"	73"	36"	2 <sup>1</sup> / <sub>2</sub> "
24"	2.5 : 1		9 <sup>1</sup> / <sub>2</sub> "	43 <sup>1</sup> / <sub>2</sub> "	30"	73 <sup>1</sup> / <sub>2</sub> "	48"	3"
30"	2.5 : 1		12"	54"	19 <sup>3</sup> / <sub>4</sub> "	73 <sup>3</sup> / <sub>4</sub> "	60"	3 <sup>1</sup> / <sub>2</sub> "
36"	2.5 : 1		15"	63"	34 <sup>3</sup> / <sub>4</sub> "	97 <sup>3</sup> / <sub>4</sub> "	72"	4"
42"	2.5 : 1		21"	63"	35"	98"	78"	4 <sup>1</sup> / <sub>2</sub> "
48"	2.5 : 1		24"	72"	26"	98"	84"	5"

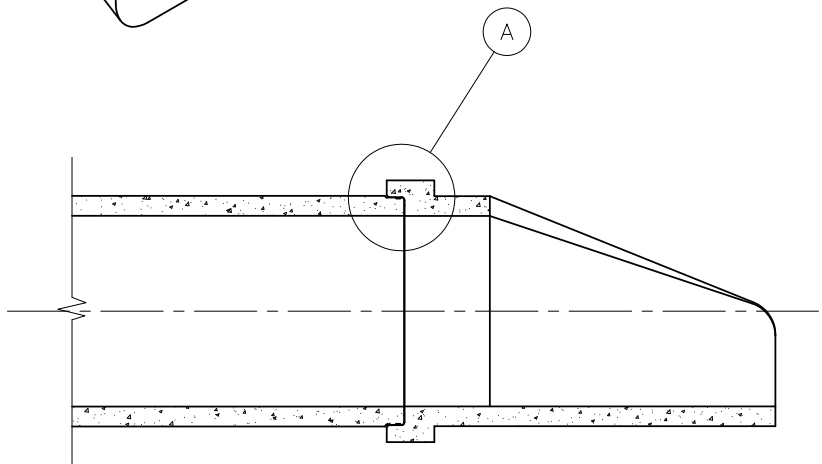
**Flared  
End**

*Flared End Section  
for Elliptical Pipe*



**DETAIL A**

Sealant Detail  
Check CP110 and CP120  
for Specific Joint Details

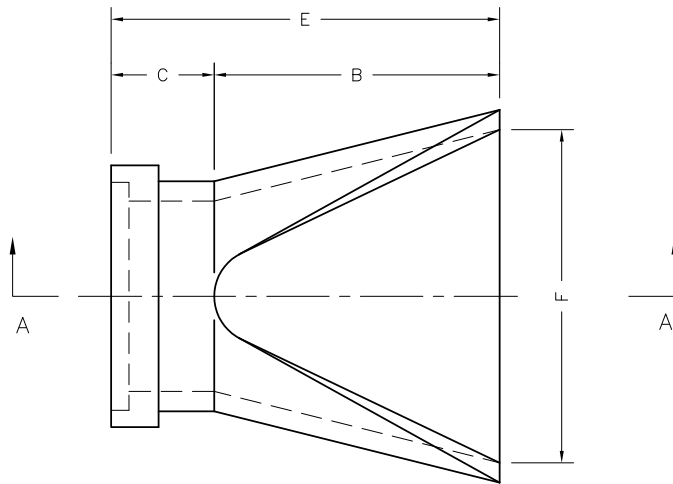


**ASSEMBLED SECTION**

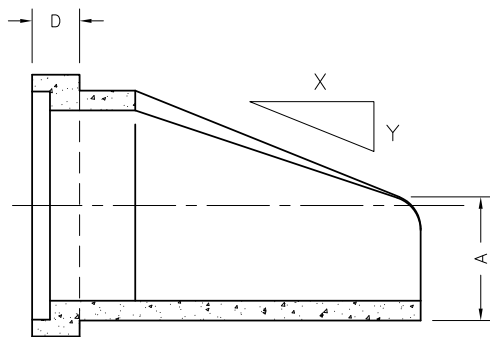
Diameter	Code	Weight
12"	FES12B	530#
15"	FES15B	740#
18"	FES18B	990#
24"	FES24B	1,540#
30"	FES30B	2,190#
36"	FES36B	4,100#
42"	FES42B	5,380#
48"	FES48B	6,550#

**Flared  
End**

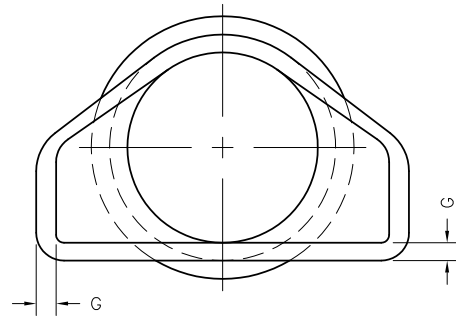
*Flared End Section  
for Elliptical Pipe*



**PLAN VIEW**



**SECTION A-A**



**END VIEW**

Diam.	Slope		A	B	C	E	F	G
	X : Y							
12"	2.4 : 1		4"	24"	48 <sup>5</sup> / <sub>8</sub> "	72 <sup>1</sup> / <sub>8</sub> "	24"	2"
15"	2.4 : 1		6"	27"	46"	73"	30"	2 <sup>1</sup> / <sub>4</sub> "
18"	2.3 : 1		9"	27"	46"	73"	36"	2 <sup>1</sup> / <sub>2</sub> "
24"	2.5 : 1		9 <sup>1</sup> / <sub>2</sub> "	43 <sup>1</sup> / <sub>2</sub> "	30"	73 <sup>1</sup> / <sub>2</sub> "	48"	3"
30"	2.5 : 1		12"	54"	19 <sup>3</sup> / <sub>4</sub> "	73 <sup>3</sup> / <sub>4</sub> "	60"	3 <sup>1</sup> / <sub>2</sub> "
36"	2.5 : 1		15"	63"	34 <sup>1</sup> / <sub>4</sub> "	97 <sup>1</sup> / <sub>4</sub> "	72"	4"
42"	2.5 : 1		21"	63"	35"	98"	78"	4 <sup>1</sup> / <sub>2</sub> "
48"	2.5 : 1		24"	72"	26"	98"	84"	5"

**Oldcastle Precast**  
801 West 12th Street  
Ogden, Utah 84404

Phone: (801) 399-1171  
Fax: (801) 392-7849

For more information about our products, please visit  
**oldcastleprecast.com**

*oldcastleprecast.com*