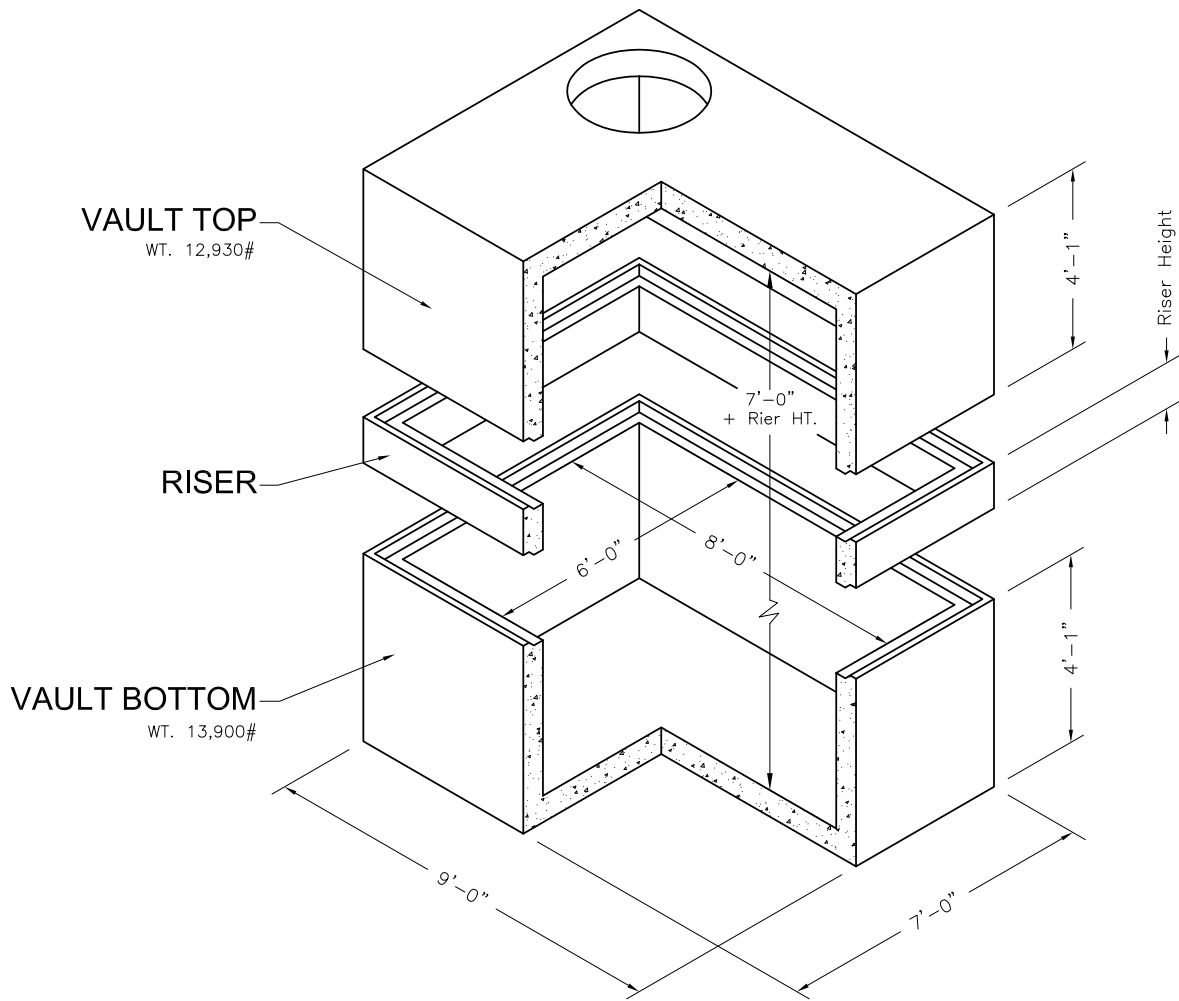


**6'x8'  
Vault**

6'x8' Utility Vault  
Bottom, Riser and Top

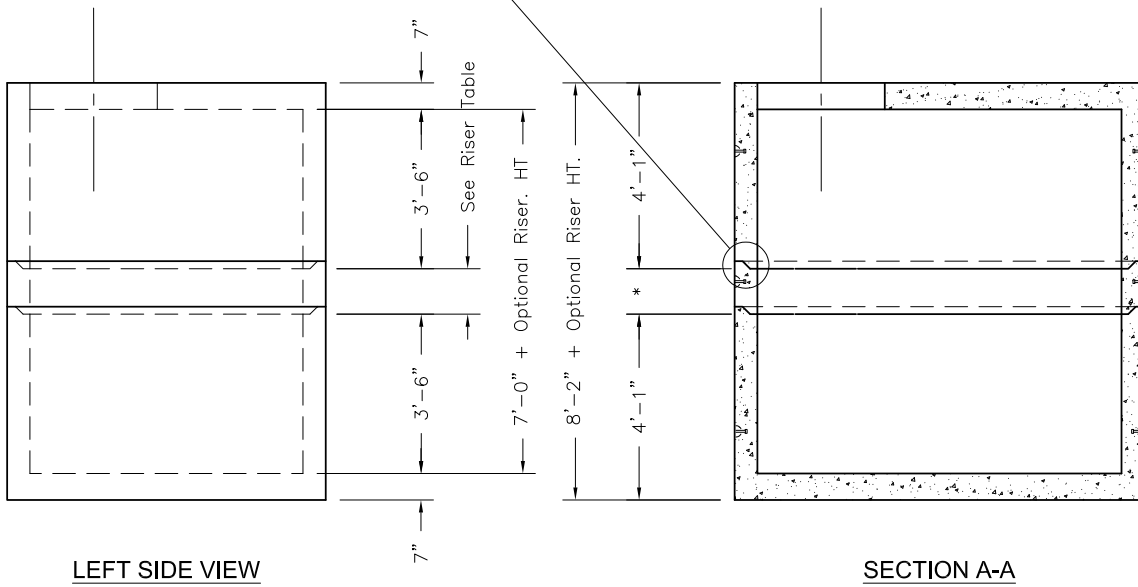
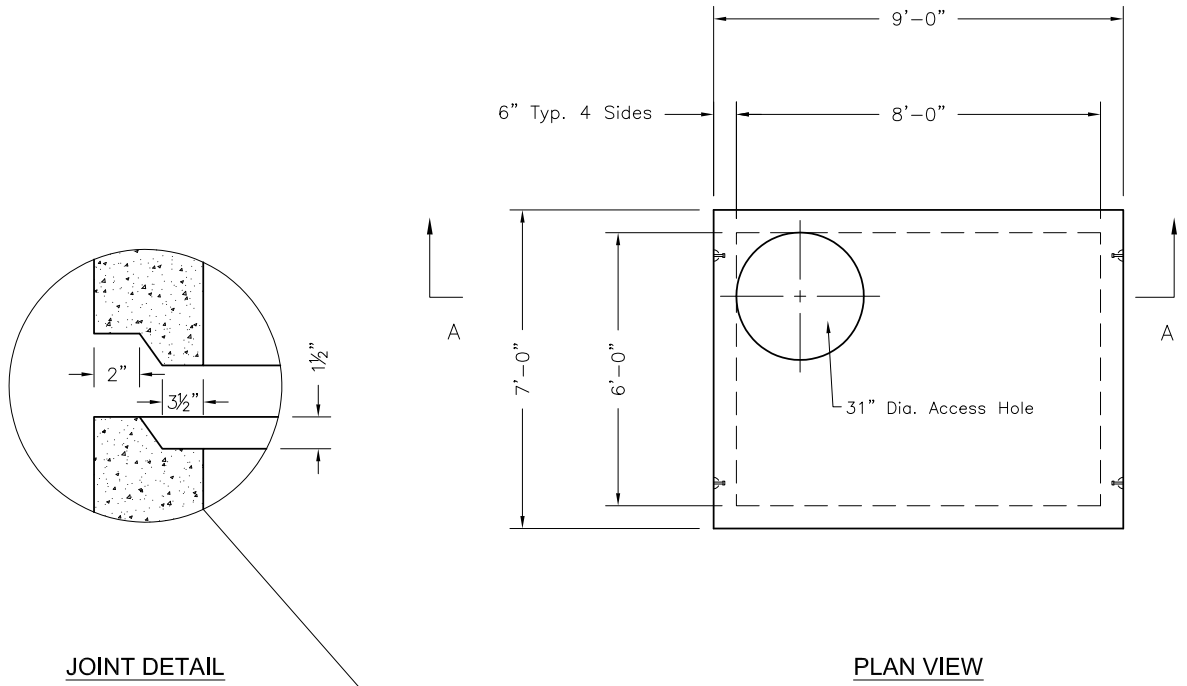


Riser

Height	Weight
1'	2,250#
2'	4,500#
3'	6,750#

NOTES:

1. Vault design complies with ASTM C-857 and C-858 with less than 2' of earth cover and ar AASHTO HS-20 loading.
2. Lifting insert type and location may change without notice.



**Oldcastle Precast**  
 801 West 12th Street  
 Ogden, Utah 84404

Phone: (801) 399-1171  
 Fax: (801) 392-7849

For more information about our products, please visit  
[oldcastleprecast.com](http://oldcastleprecast.com)

[oldcastleprecast.com](http://oldcastleprecast.com)