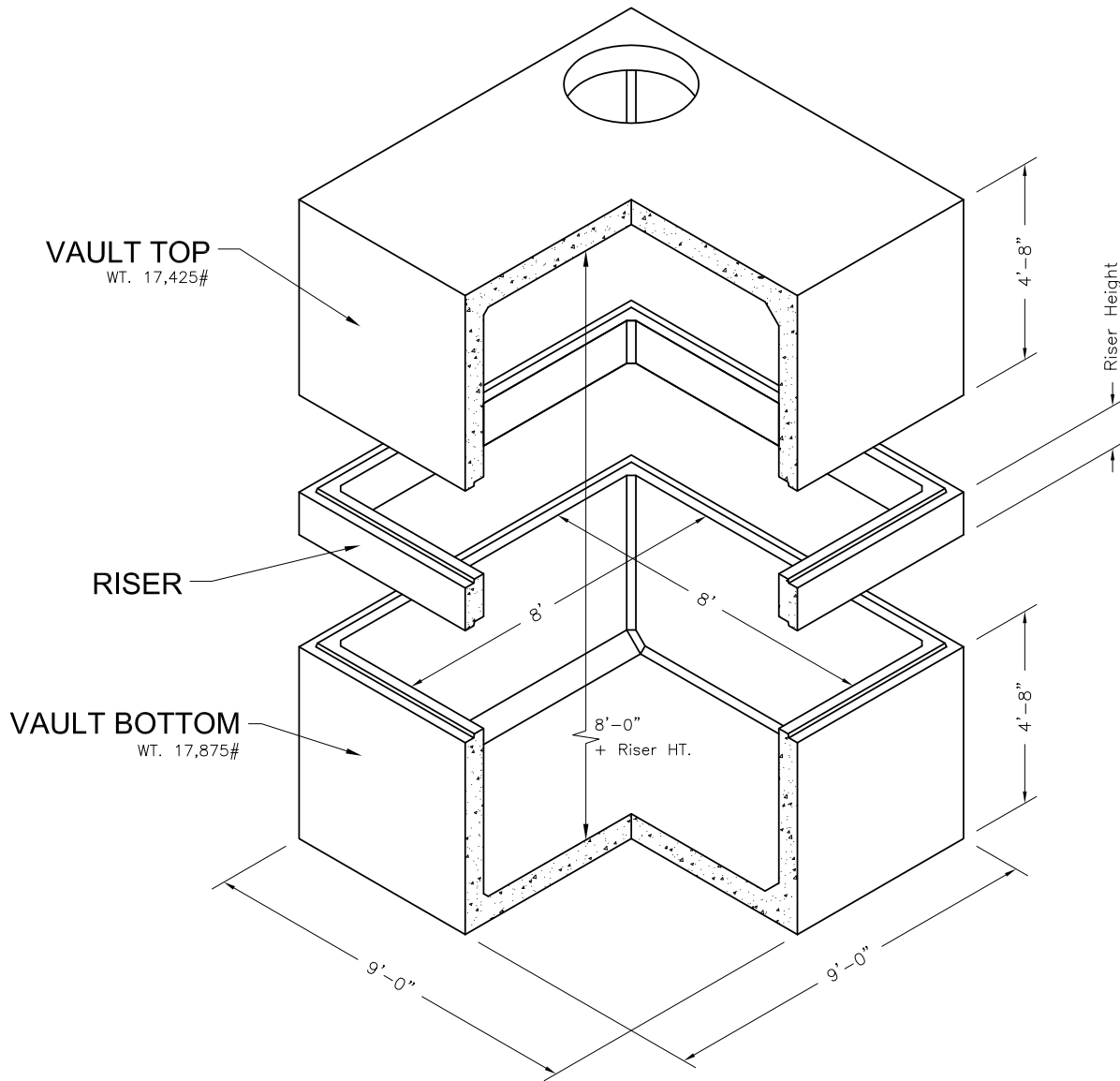


**8'x8'  
Vault**

8'x8' Utility Vault  
Bottom, Riser and Top

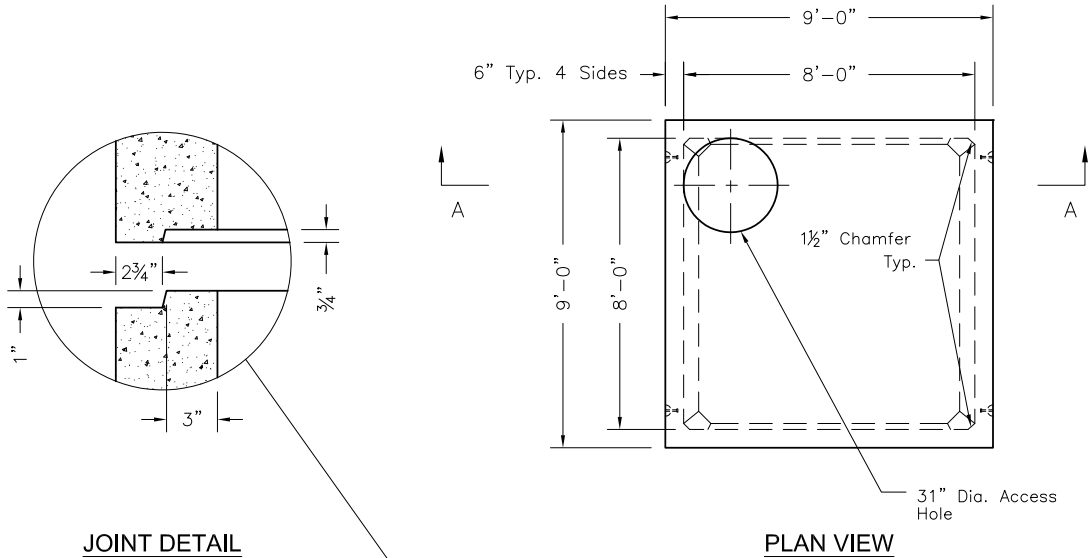


Riser

Height	Weight
2'	5,000#
3'	7,500#

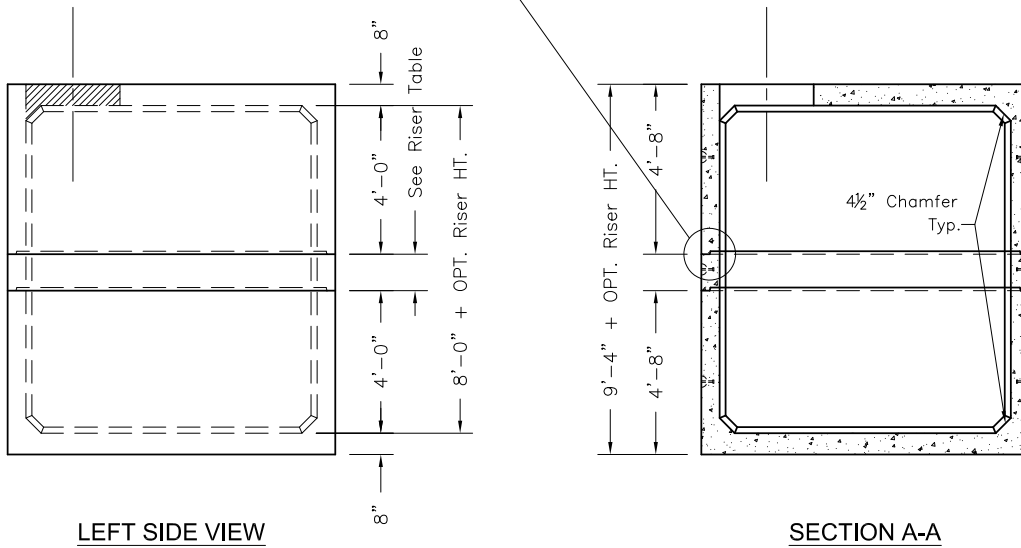
NOTES:

1. Vault design complies with ASTM C-857 and C-858 with less than 2' of earth cover and ar AASHTO HS-20 loading.
2. Lifting insert type and location may change without notice.



**JOINT DETAIL**

**PLAN VIEW**



**LEFT SIDE VIEW**

**SECTION A-A**

**Oldcastle Precast**  
 801 West 12th Street  
 Ogden, Utah 84404

Phone: (801) 399-1171  
 Fax: (801) 392-7849

For more information about our products, please visit  
**oldcastleprecast.com**

*oldcastleprecast.com*