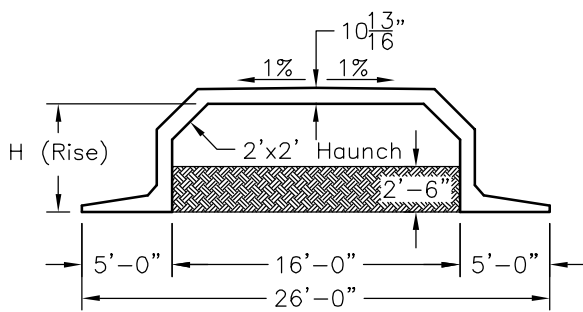
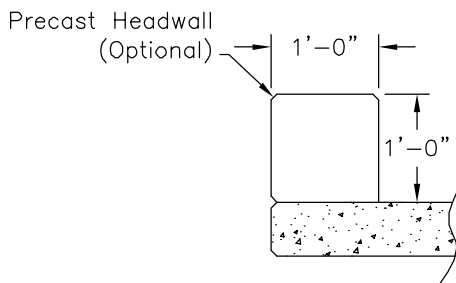


PLAN VIEW

Precast Wing Wall
Options Available.



ELEVATION VIEW

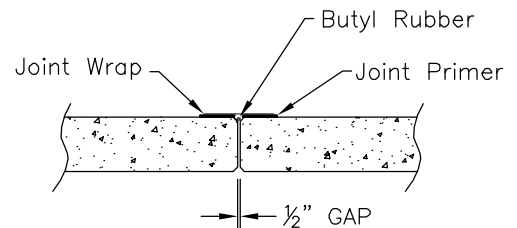
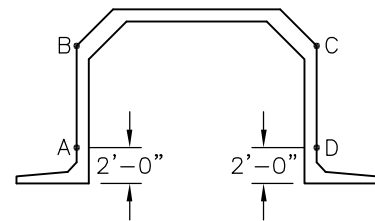


HEADWALL OPTION

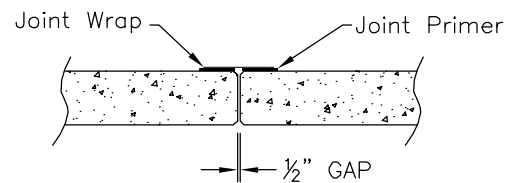
GENERAL NOTES:

1. Concrete: 28 Day Compressive Strength $f'c = 5,000$ psi
2. Steel Reinforcement: ASTM A-615, Grade 60
3. Design Live Load: HS-20
4. Earth Cover: 0'-6" Min to 5'-0" Max

| Structure | H (Rise) | Waterway Areas | Section Weights |
|-----------|----------|----------------|-----------------|
| OM 16/4 | 4 ft | 20 sf | 15.9 Tons |
| OM 16/6 | 6 ft | 52 sf | 17.9 Tons |
| OM 16/8 | 8 ft | 84 sf | 19.9 Tons |
| OM 16/10 | 10 ft | 116 sf | 21.9 Tons |
| OM 16/12 | 12 ft | 148 sf | 23.9 Tons |



DETAIL FROM B-C



DETAIL FROM A-B & C-D

SCALE: 3/32" = 1'-0"



5115 Massaponax Church Road, Fredericksburg, Virginia
Phone: 540.898.6300 Fax: 540.898.2389

OM 16 SERIES

FILE NAME: OMEGA BRIDGE - 16

ISSUE DATE: January, 2003

**16'-0" Span
Omega Bridge
Standard Layout**

Copyright © 2003 Oldcastle Precast, Inc.