

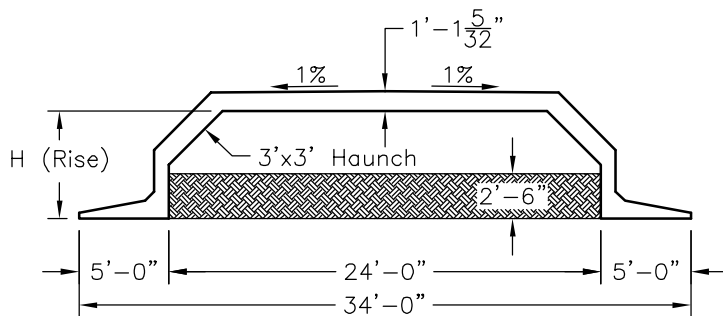
**PLAN VIEW**

Precast Wing Wall  
Options Available.

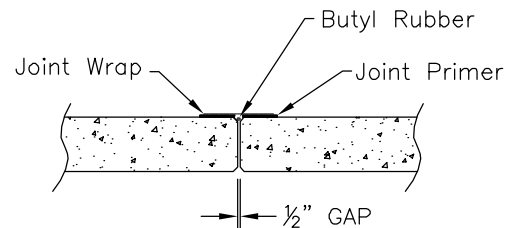
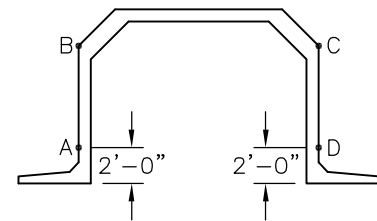
**GENERAL NOTES:**

1. Concrete: 28 Day Compressive Strength  $f'c = 5,000$  psi
2. Steel Reinforcement: ASTM A-615, Grade 60
3. Design Live Load: HS-20
4. Earth Cover: 0'-6" Min to 5'-0" Max

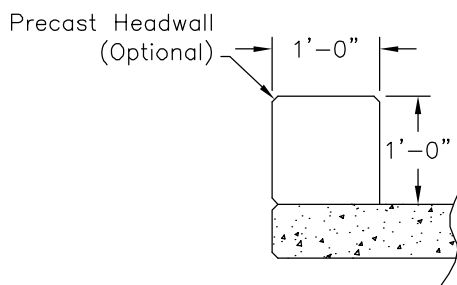
Structure	H (Rise)	Waterway Areas	Section Weights	Section Lengths (L)
OM 24/4	4 ft	29 sf	23 Tons	8 ft
OM 24/6	6 ft	75 sf	25 Tons	8 ft
OM 24/8	8 ft	123 sf	27 Tons	8 ft
OM 24/10	10 ft	171 sf	21.7 Tons	6 ft
OM 24/12	12 ft	219 sf	23.2 Tons	6 ft



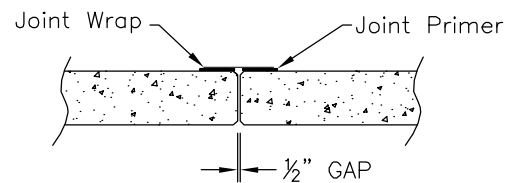
**ELEVATION VIEW**



**DETAIL FROM B-C**



**HEADWALL OPTION**



**DETAIL FROM A-B & C-D**

SCALE: 3/32" = 1'-0"



5115 Massaponax Church Road, Fredericksburg, Virginia  
Phone: 540.898.6300 Fax: 540.898.2389

**OM 24 SERIES**

FILE NAME: OMEGA BRIDGE - 24.DWG

ISSUE DATE: January, 2003

**24'-0" Span  
Omega Bridge  
Standard Layout**

Copyright © 2003 Oldcastle Precast, Inc.