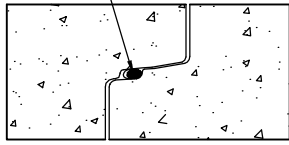


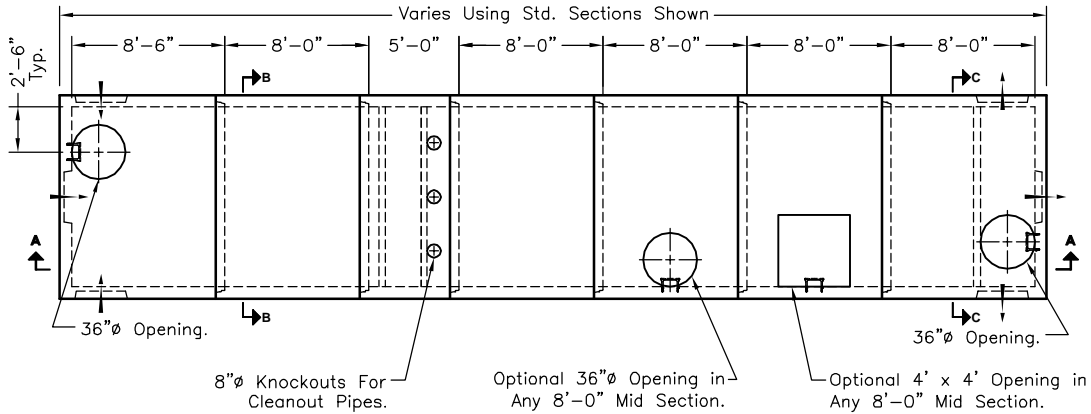
GENERAL NOTES:

1. Concrete: 28 Day Compressive Strength $f'c = 5,000$ psi.
2. Reinforcing Steel, ASTM A-615 Grade 60
3. Design Live Load = HS-20
4. Earth Cover = 0'-0" Min. to 8'-0" Max.
5. Watertight O-Ring Joint Meeting ASTM-C443 Specification.
6. For Proper Operation Invert of Structure Must be Level.
7. Max Section Weight. = 21.14 Tons

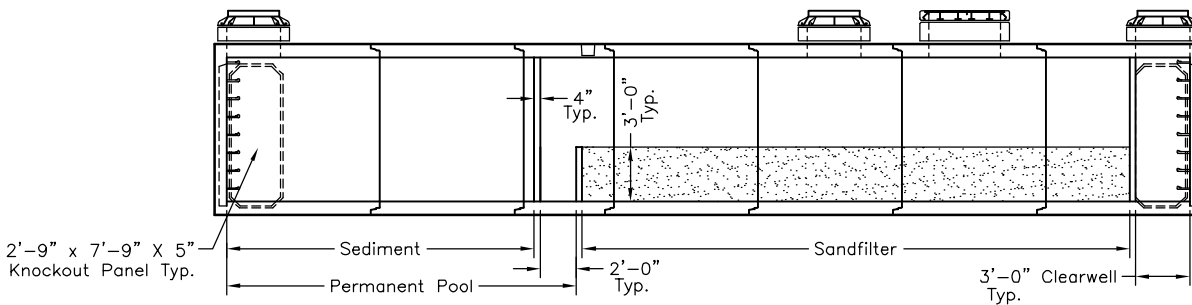
Compressed O-Ring Gasket.



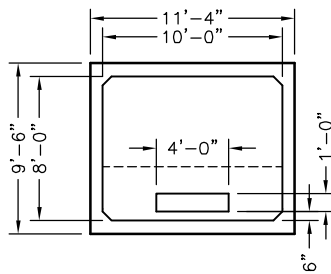
JOINT DETAIL



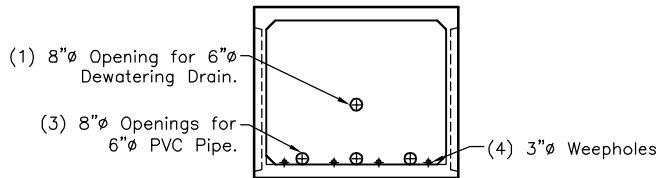
PLAN VIEW



SECTION A-A



SECTION B-B



SECTION C-C

SCALE: 3/32" = 1'-0"



5115 Massaponax Church Road. Fredericksburg, Virginia
Phone: 540.898.6300 Fax: 540.898.2389

DC Sandfilter

FILE NAME: 365ECFDCSF108.DWG

ISSUE DATE: March, 2003

**10'-0" x 8'-0"
DC Sandfilter
Standard Layout**

Copyright © 2003 Oldcastle Precast, Inc.