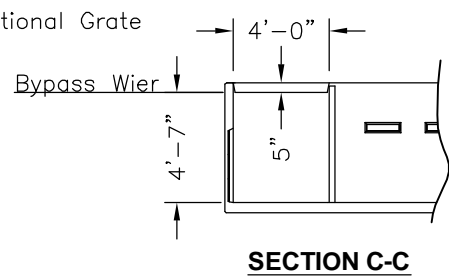
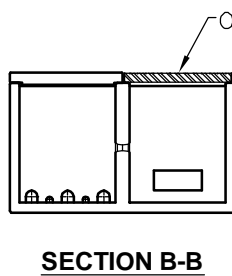
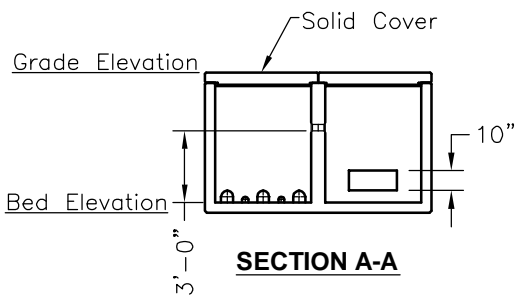
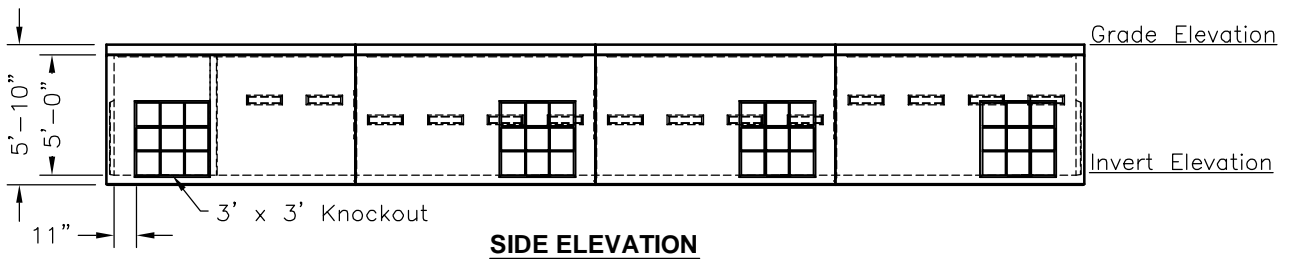
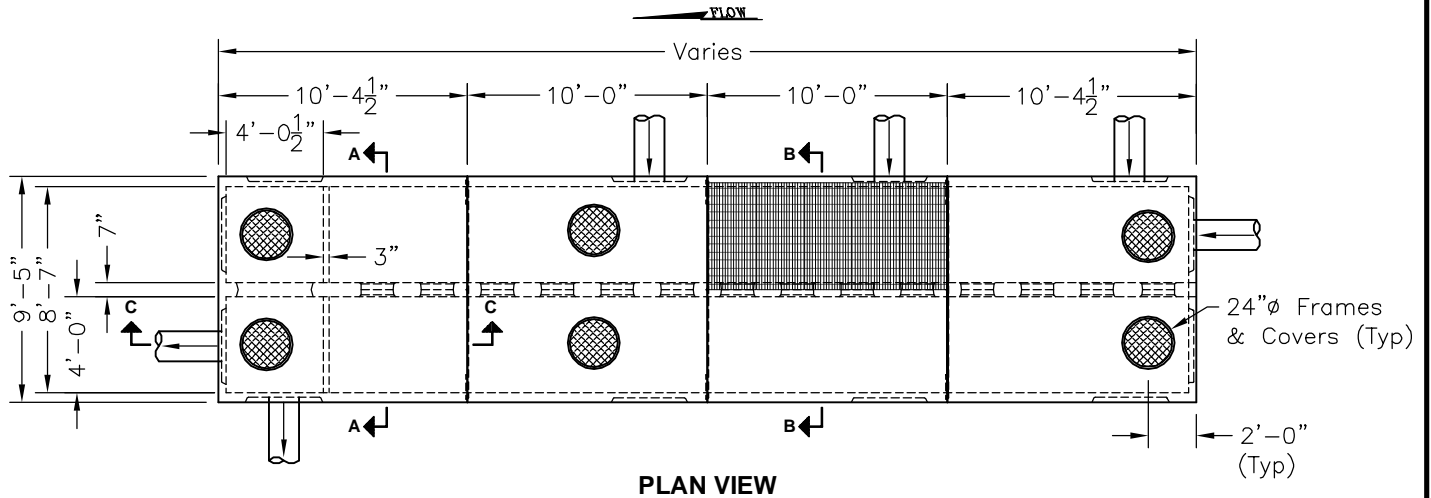


GENERAL NOTES:

1. Concrete: 28 Day Compressive Strength $f'_c = 5,000$ psi
2. Steel Reinforcement: ASTM A-615, Grade 60
3. Design Live Load: HS-20-44
4. Earth Cover: 0'-0" Min to 0'-0" Max
5. For Proper Operation Invert of Structure must be Level.
6. Structure is Post Tensioned for Water Tight Seal.
7. Max Section Weight = 9.47 Tons
8. Sediment and Filter Chambers are Reversible to Meet Site Requirements as Needed.



SCALE: 1/8" = 1'-0"



5115 Massaponox Church Road. Fredericksburg, Virginia
Phone: 540.898.6300 Fax: 540.898.2389

DELAWARE SANDFILTER

FILE NAME: 365ECFDELASF22.DWG

ISSUE DATE: March, 2003

**Delaware Sandfilter
Standard Layout with
2'-2" Flow Ports**

Copyright © 2003 Oldcastle Precast, Inc.