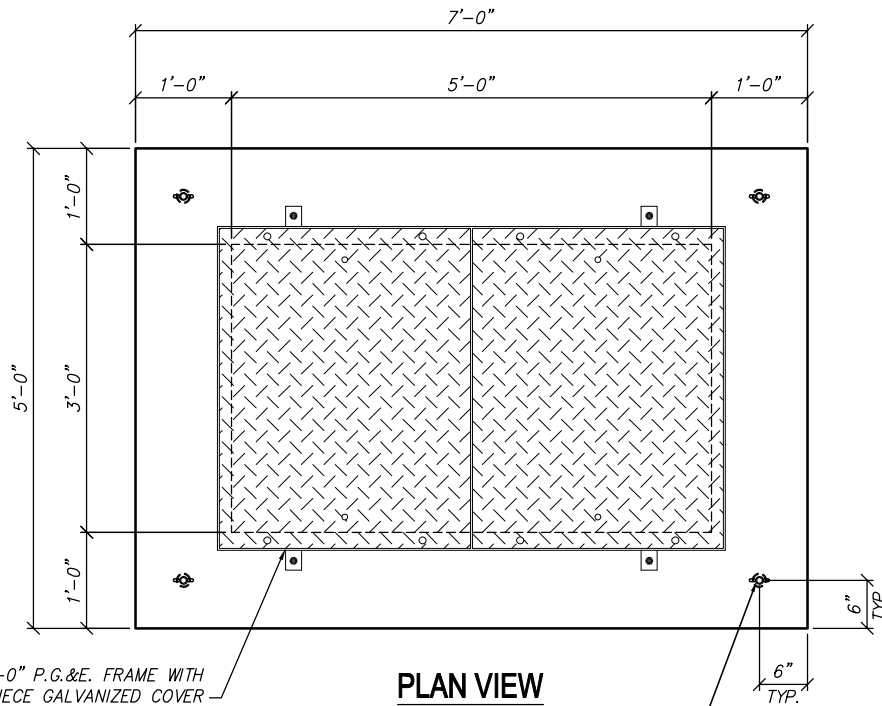


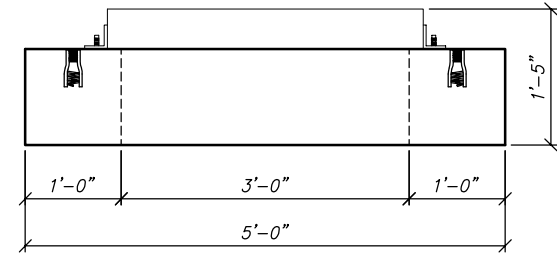
REV	DESCRIPTION	BY	DATE
A	ADDED NEW TITLEBLOCK	AT	5/16/12
B	ADDED INSERTS	AT	3/20/17
C	NCS UPDATES	CP	6/26/17



3'-0" X 5'-0" P.G.&E. FRAME WITH
2-PIECE GALVANIZED COVER
(HS20 RATED)

PLAN VIEW
SCALE: 1/2" = 1'-0"

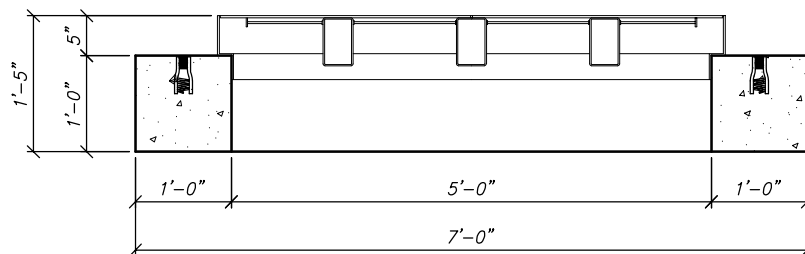
(4) 3/4" EXPANDED FERRULE INSERTS



END VIEW
SCALE: 1/2" = 1'-0"

STRUCTURAL NOTES

1. CONCRETE: 28 DAY COMPRESSIVE STRENGTH $f_c = 5,000$ psi
2. REBAR: ASTM A-615 GRADE 60
3. MESH: ASTM A-1064 GRADE 65
4. DESIGN: ACI 318-14 BUILDING CODE
ASTM C-857 "MINIMUM STRUCTURAL DESIGN
LOADING FOR UNDERGROUND PRECAST
CONCRETE UTILITY STRUCTURES"
5. LOADS: HS20-44 W/30% IMPACT PER AASHTO
80 PSF LATERAL LIVE LOAD SURCHARGE - UP TO 8'-0" DEPTH
SOIL: 40 PCF LATERAL SOIL PRESSURE ABOVE WATER TABLE
80 PCF LATERAL SOIL PRESSURE BELOW WATER TABLE
120 PCF SOIL DENSITY
6. SOIL COVER: NONE
7. WATER TABLE: 5'-0" BELOW GRADE
8. BEARING PRESSURE: 2,280 PSF



SECTION VIEW
SCALE: 1/2" = 1'-0"



THIS DOCUMENT IS THE PROPERTY OF OLDCASTLE PRECAST, INC. IT IS CONFIDENTIAL, SUBMITTED FOR REFERENCE PURPOSES ONLY, AND SHALL NOT BE USED IN ANY WAY INJURIOUS TO THE INTERESTS OF, OR WITHOUT THE WRITTEN PERMISSION OF OLDCASTLE PRECAST, INC. COPYRIGHT ©2017 OLDCASTLE PRECAST, INC. ALL RIGHTS RESERVED

I/O PULLBOX

3'-0" x 5'-0" TRAFFIC RATED BOX
APS

CUSTOMER
ARIZONA PUBLIC SERVICE STANDARD

DATE	SALES	DRAWN	ENGINEER	CHECKED	SALES ORDER
6/29/17		EG			---
DRAWING NUMBER				REVISION	SHEET
Y1002-1				---	1 OF 1
				REV DATE	---