



# STORM RECONDITION WATER Rooftop Runoff

**Removes Non-Soluble Solids**  
such as sediment, debris, metals  
and hydrocarbons.

**Corrosion-Resistant**  
stainless steel accepts standard  
diameter downspout pipes.

**Variable Design**  
can be flush mounted or  
recessed.



**Installation & Maintenance**  
is easy and economical  
by design.

**Custom Downspout**  
adapter shapes and sizes  
are available.

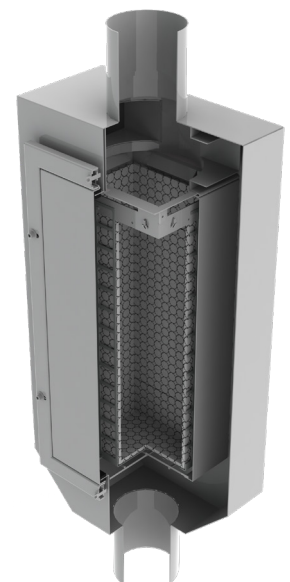
**Filter Medium**  
can be customized depending  
on the pollutants of concern.

## FLOGARD<sup>®</sup> DOWNSPOUT FILTER

### Inline Filter Specially Designed for Downspouts

The Flogard Downspout Filter is typically installed on downspout pipes of commercial buildings for the removal of non-soluble pollutants normally found on building roofs and parking decks.

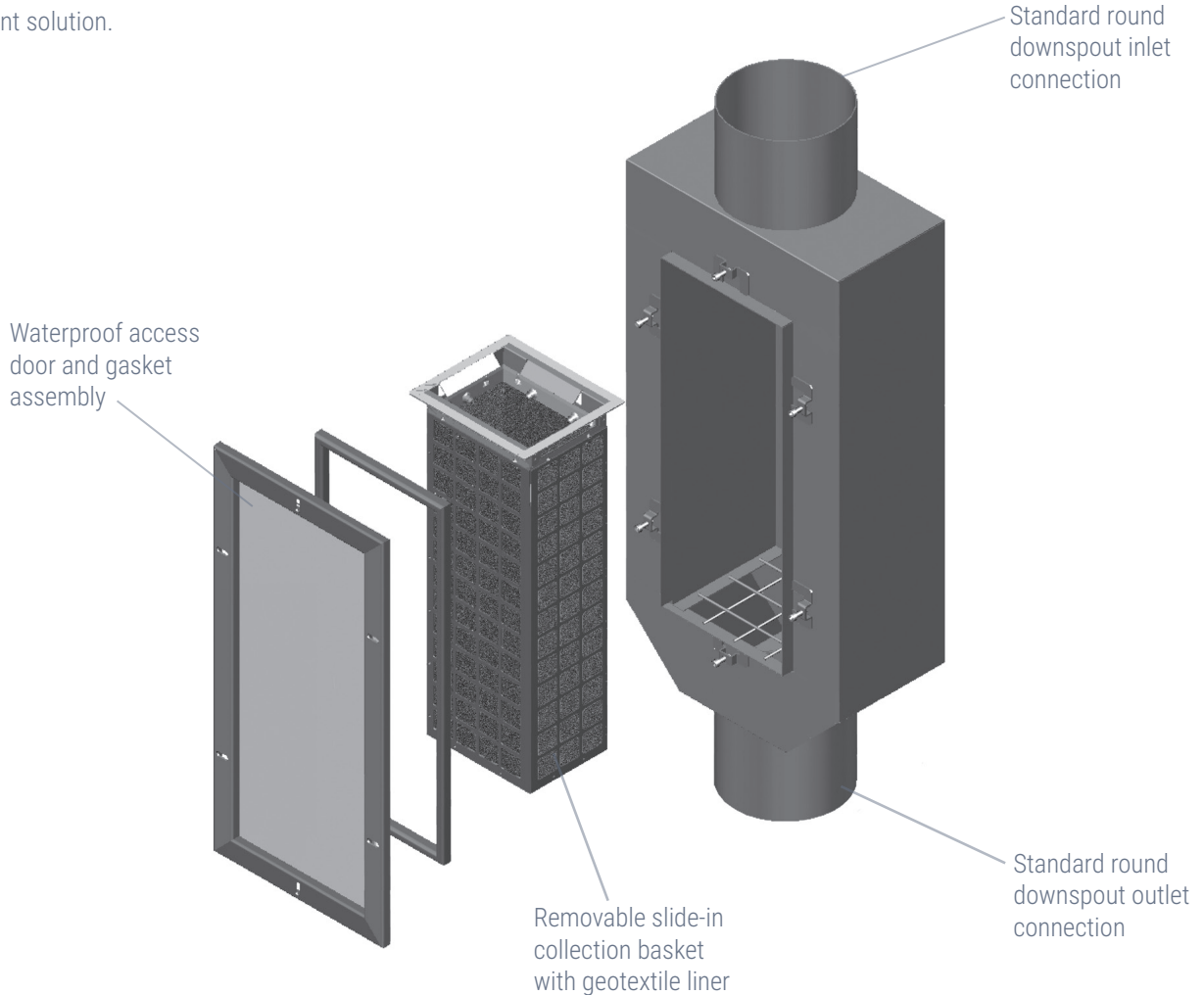
The inline downspout filter is an ideal solution for urban sites with little-to-no property area outside of the building perimeter. It is designed to provide effective filtering at low flows and incorporates a high-flow bypass to ensure conveyance is not impeded.



INLET FILTRATION

## Fully Scalable Solution for Stormwater Treatment

The Flogard Downspout Filter can be installed as a stand-alone treatment device or used in conjunction with other Oldcastle products as part of a total stormwater management solution.



## SPECIFICATIONS

| Model No. | Inlet ID (dia, in) | Box ID (in x in x in) | Solid Storage (cu ft) | Filtered Flow (gpm) | Bypass Capacity (gpm) |
|-----------|--------------------|-----------------------|-----------------------|---------------------|-----------------------|
| FG-DS4    | 4                  | 14 x 29 x 7.5         | 0.35                  | 30                  | 145                   |
| FG-DS6    | 6                  | 14 x 29 x 7.5         | 0.35                  | 85                  | 425                   |
| FG-DS8    | 8                  | 22 x 33 x 17.5        | 1.70                  | 185                 | 915                   |
| FG-DS10   | 10                 | 22 x 33 x 17.5        | 1.70                  | 325                 | 1,650                 |

Storage capacity reflects 80% of maximum solids collection prior to impeding filtering bypass.

Filtered flow rate includes a safety factor of 2 to 1.

Available with standard Fossil Rock or other custom absorbants.

Should be used in conjunction with a regular maintenance program.

Refer to manufacturer's recommended guidelines.

**CITY OF LOS ANGELES**

\* Research report #5584

\* Filter is approved for use in the city of Los Angeles.



(800) 579-8819

oldcastleinfrastructure.com