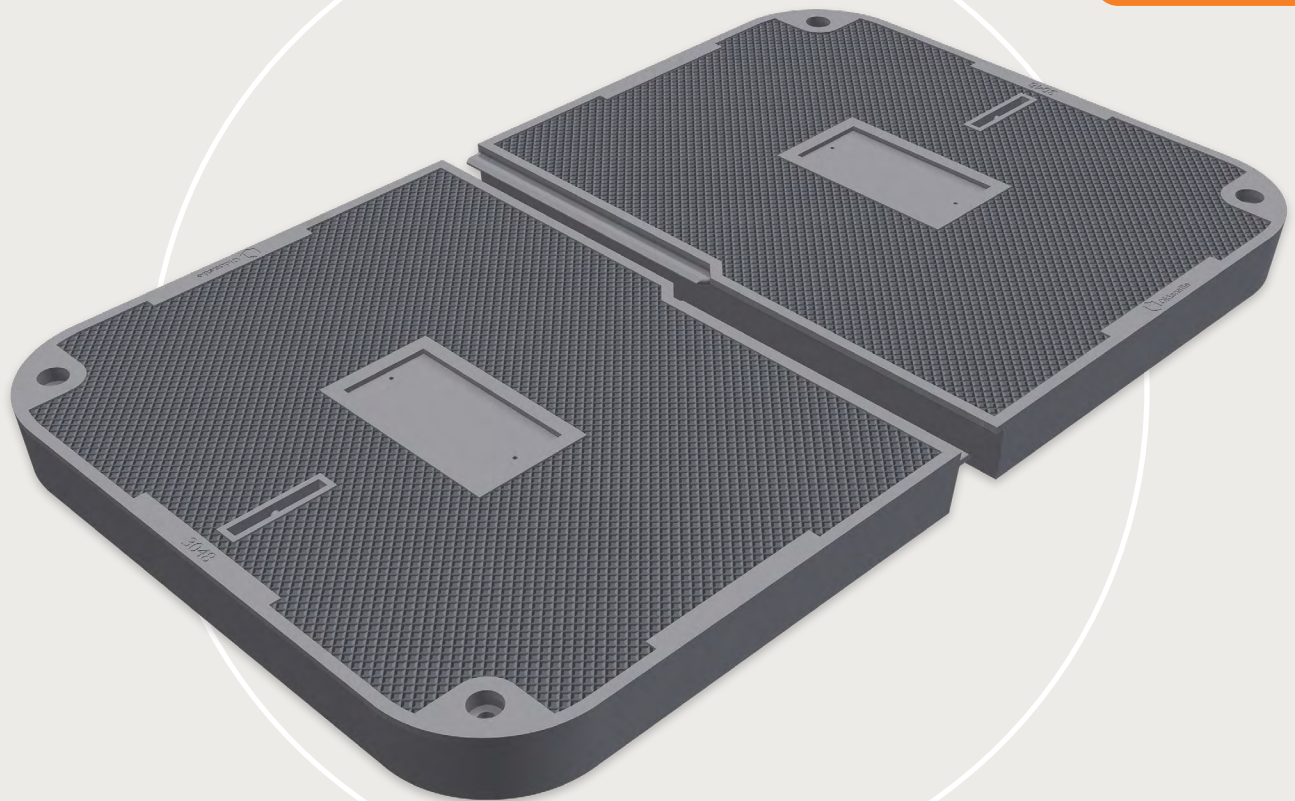


# Duralite<sup>®</sup>

Lightweight

Durable

Chip Resistant



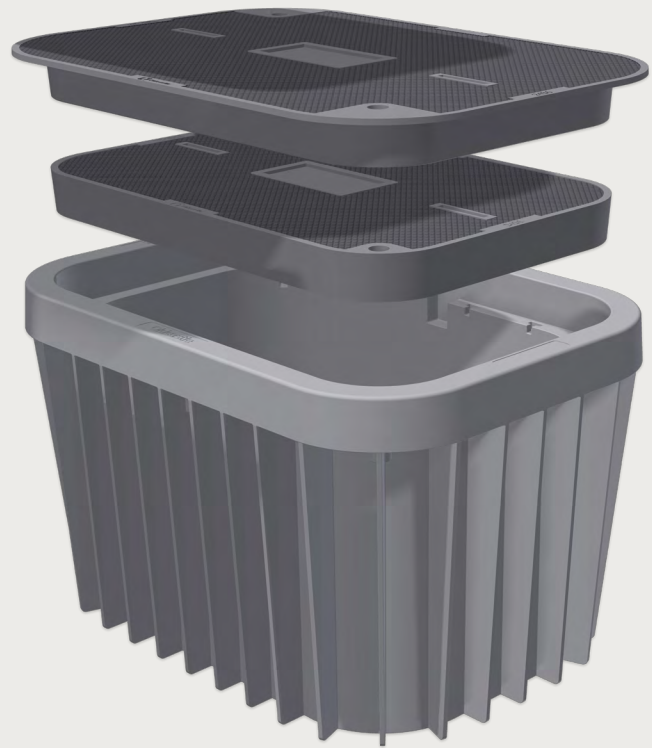
**Lightweight**  
**Superior**  
**Strength**

The impressively light Oldcastle Infrastructure Duralite<sup>®</sup> covers have been engineered to weigh four times less than typical industry solutions, giving you the ability to install more boxes—faster and easier than ever—without unnecessary equipment or crew. The Duralite lightweight covers are offered in a variety of sizes that compliment the line of Duralite tier-rated bodies.

# Surprisingly Light. Exceptionally Strong.

Duralite® intelligently blends composite materials to provide durable, Tier 22 performance in both T-cover and Flush cover designs.

- Flush or T-Cover design
- EMS friendly
- Interchangeable with Duralite and Oldcastle Polymer bodies
- Covers include recesses for customized marking plates



Model	Size (LxW)	Weight (Flush Cover)	Weight (T-Cover)
1015	10" x 15"	9 lbs	N/A
1118	11" x 18"	8.7 lbs	N/A
1212	12" x 12"	6.5 lbs	N/A
1324	13" x 24"	19 lbs	N/A
1730	17" x 30"	35 lbs	N/A
2436	24" x 36"	40 lbs	46 lbs
3048	30" x 48"	39 lbs (per half)	43 lbs (per half)
3660	36" x 60"	68 lbs (per half)	82 lbs (per half)
<b>Material</b>	Composite		
<b>Performance</b>	Tier 15, Tier 22		
<b>Rating</b>	Heavy Duty		

Actual load rating is determined by the box and cover combinations.  
Dimensions may vary slightly.

4-A-096 Revision 4/2023

Trusted partnerships.  
Full scale solutions.



[www.oldcastleinfrastructure.com](http://www.oldcastleinfrastructure.com) | (888) 965-3227