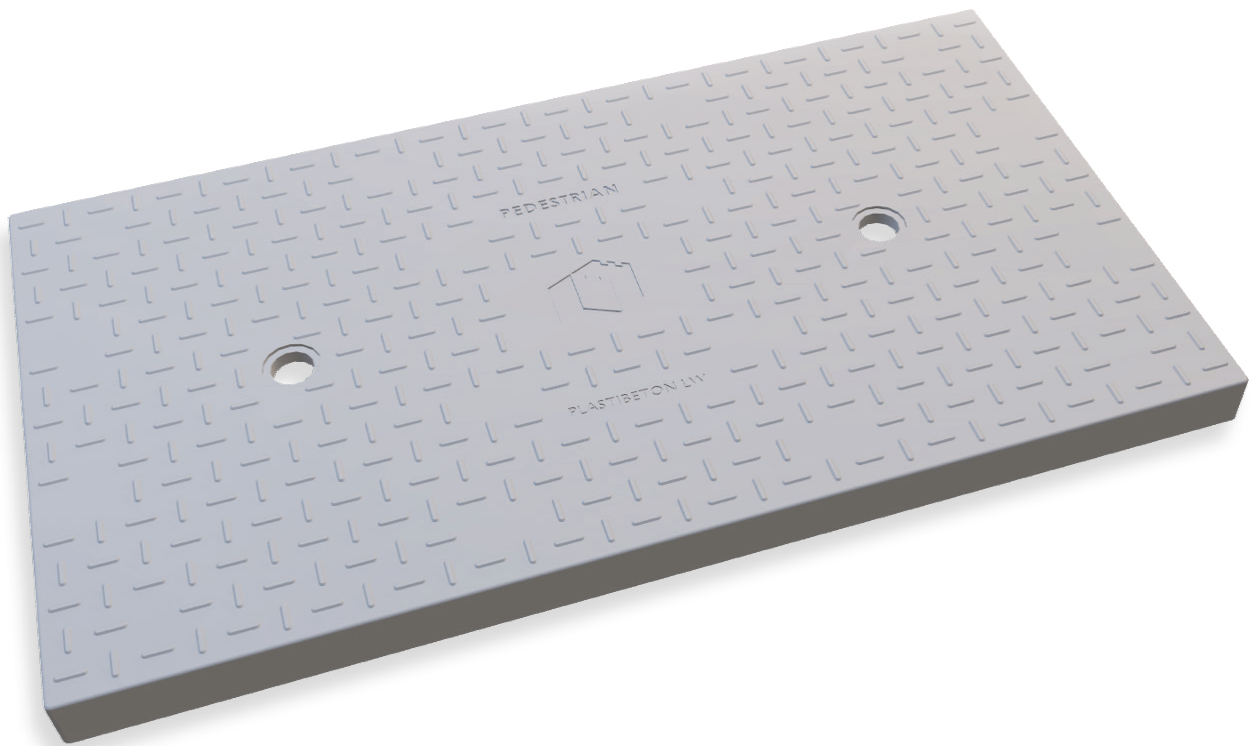


PLASTIBETON® PED

DURABLE

LIGHTWEIGHT

EASY INSTALLATION



TRUSTED
to protect



By using an advanced composite trench and cover system, Plastibeton® PED delivers a high performing trench system at a lower total install cost than any competition. The covers are designed, tested, and certified to be walked on without compromising safety and the lightweight composition and design makes it easy to install, remove or upgrade.

Product Available Q1 2020

RELIABILITY

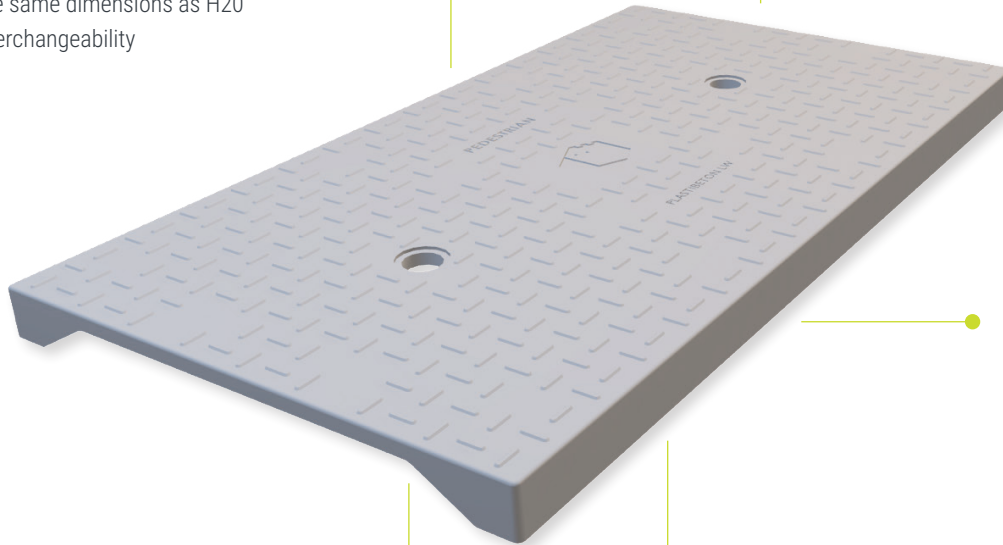
beyond the rest

Interchangeable Options

Made with the same dimensions as H20 covers for interchangeability

Lifting Holes

Two simple holes or pins to allow for removal from trench



Anti-Skid

Non-slip safety surface

Interlocking

Interlocking and bolt-down options available

Durability

Improved performance compared to other fiberglass or composite products

MODEL	SIZE (WIDTH x LENGTH x THICKNESS)	WEIGHT	COVERS PER SECTION
TC20	22" x 39 3/8" x 2"	49	3
TC30	32" x 23 5/8" x 2 1/2"	49	5
TC40	42 3/8" x 23 5/8" x 3"	73	5
MATERIAL	Light weight polymer concrete and sheet moulding compound		
PERFORMANCE	Pedestrian		
LOAD RATING	300 psf		

As a leader in composite products and manufacturing, Oldcastle Infrastructure has the advantage of low tooling costs and existing product families and manufacturing processes. In combination with a fast installation process requiring far fewer truckloads, Plastibeton® PED provides a lower total cost than any competition—most importantly, without compromising on quality, functionality and durability.