

MATERIAL & STYLE

Polyethylene Blend
Straight Wall, Fluted
White

- (A) With Lid Seat
- (B) Without Lid Seat*

0018D-14

- (A) 9.8 lbs
- (B) 9.0 lbs

0018D-18

- (A) 9.8 lbs
- (B) 10.9 lbs

0018D-24

- (A) 14.0 lbs
- (B) 12.7 lbs

OPTIONS

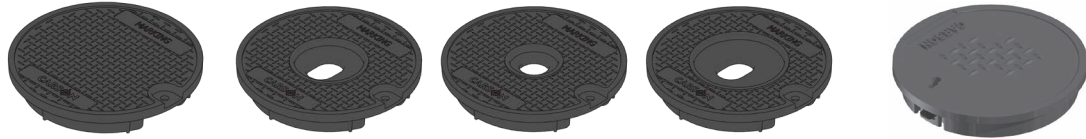
Mouseholes

*Requires Ring and Cover

For use in non-vehicular traffic situations only. Weights and dimensions may vary slightly. Actual load rating is determined by the box and cover combination.

© 2021 Oldcastle Infrastructure, Inc

OPTIONS



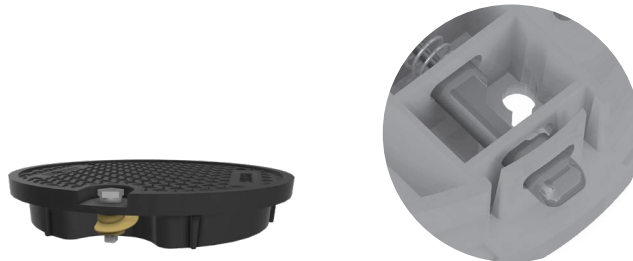
Available Covers:
(0018D with Lid Seat)

- Polyethylene Blend, Flush Solid
- Polyethylene Blend, Flush with AMR
- HDPE, Flush Solid



Ring and Cover:
(0018D without Lid Seat)

- Cast Iron, Ring and Polyethylene Blend Cover
- Cast Iron, Ring and Cast Iron Cover



Add On Options:

- Worm Gear Hardware (Polyethylene Blend Covers)
- Dallas Lock (HDPE Covers)

RAW MATERIAL SPECIFICATION

BODY : Material Property

Tensile Strength
Flexural Modulus
Chemical Resistance
Water Absorption
UV Resistance

Test Method

ASTM D638
ASTM D790
ASTM D543
ASTM D570
ASTM G154

Typical Value¹

≥ 3,000 psi
120,000 min, not to exceed 240,000 psi
Very Resistant
Less than 2% weight change
Retention of 75% of physical properties after 1,000 hrs

¹ The values listed for physical property measurements are nominal values only. Certain physical property measurements are subject to variations consistent with the test methods and are within a generally accepted range for such values.

! WARNING: Cancer - www.P65Warnings.ca.gov

All information contained on this sheet is current at the time of publication.
Oldcastle reserves the right to discontinue or update product information without notice.

Revision 06/02/21
© 2021 Oldcastle Infrastructure, Inc