



NexGen **0020 EXTENSIONS**



MATERIAL & STYLE

Polyethylene Blend

Straight Wall, Fluted

Black

0020-EXTENSIONS

OES 20k Specification
20,000 lbs Vertical Loading

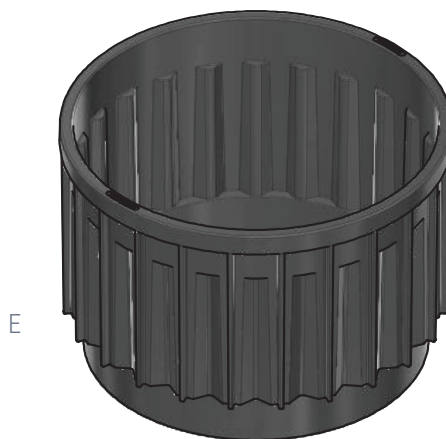
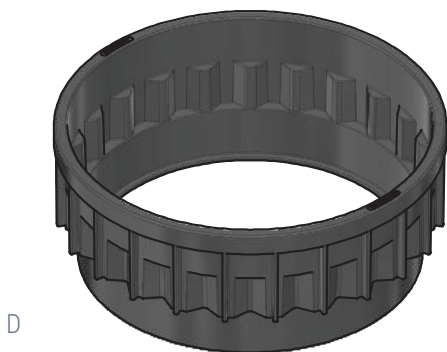
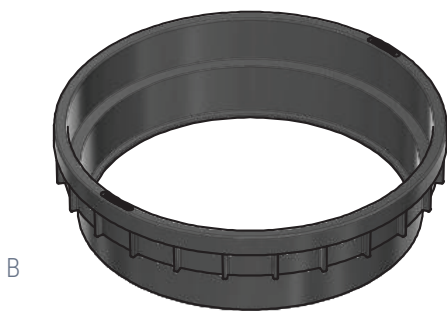
A) 2" Depth: 5.0 lbs

B) 3" Depth: 5.5 lbs

C) 4" Depth: 6.0 lbs

D) 6" Depth: 8.0 lbs

E) 12" Depth: 13.0 lbs



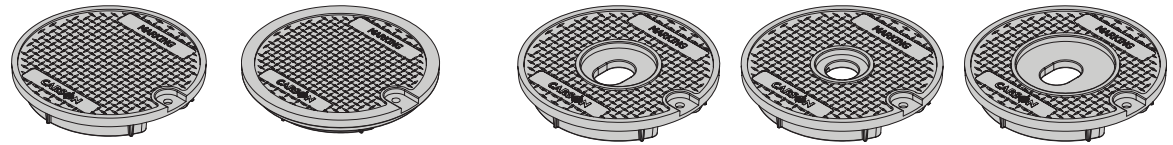
MEDIUM DUTY

For use in non-vehicular traffic situations only. Weights and dimensions may vary slightly. Actual load rating is determined by the box and cover combination.

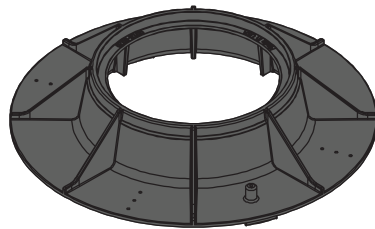


OPTIONS

Available Covers:



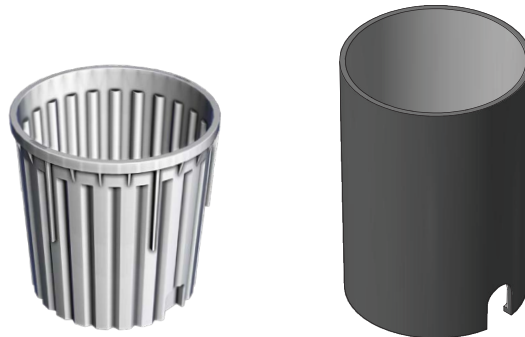
- Flush, Solid
- Overlapping, Solid
- Flush with AMR
- Overlapping with AMR



- Ring



- Thermo Pack



Compatible Bodies:

- Carson® NexGen
- Carson® Heavywall

RAW MATERIAL SPECIFICATION

BODY : Material Property

Tensile Strength
Flexural Modulus
Chemical Resistance
Water Absorption
UV Resistance

Test Method

ASTM D638
ASTM D790
ASTM D543
ASTM D570
ASTM G154

Typical Value¹

≥ 3,000 psi
120,000 min, not to exceed 240,000 psi
Very Resistant
Less than 2% weight change
Retention of 75% of physical properties after 1,000 hrs

¹ The values listed for physical property measurements are nominal values only. Certain physical property measurements are subject to variations consistent with the test methods and are within a generally accepted range for such values.

! WARNING: Cancer - www.P65Warnings.ca.gov

All information contained on this sheet is current at the time of publication.
Oldcastle reserves the right to discontinue or update product information without notice.

Revision 04/02/20

© 2020 Oldcastle Infrastructure, Inc