

MATERIAL & STYLE

Polyolefin Blend
Straight Wall

3048-18

ANSI/SCTE-77, Tier 15
90 lbs

ANSI/SCTE-77, Tier 22
90 lbs

3048-24

ANSI/SCTE-77, Tier 15
112 lbs

ANSI/SCTE-77, Tier 22
112 lbs

3048-36

ANSI/SCTE-77, Tier 15
147 lbs

ANSI/SCTE-77, Tier 22
147 lbs

OPTIONS

Mouseholes/Knockouts

	A	B	C
3048-18	33 3/8"	50 7/8"	18"
3048-24	33 3/8"	50 7/8"	24"
3048-36	33 3/8"	50 7/8"	36"



MEDIUM DUTY
ANSI/SCTE TIER 15



HEAVY DUTY
ANSI/SCTE TIER 22

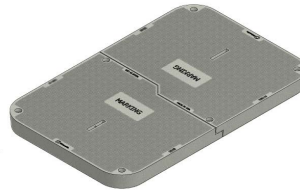
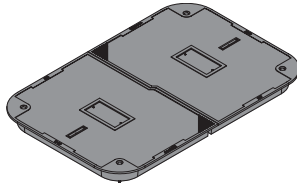
Cover comes standard with permanent markings for manufacturer, load rating, model size and manufacturing location. Based upon lid and body combination, this unit can be Tier 15 or Tier 22. T22 rating when paired with T22 Cover.

Revision 06/16/20

For use in non-vehicular traffic situations only. Weights and dimensions may vary slightly. Actual load rating is determined by the box and cover combination.

© 2020 Oldcastle Infrastructure, Inc

OPTIONS



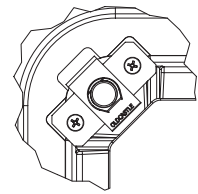
Available Covers:

- Duralite™, Flush Split Cover
- Duralite™, T-Cover Split Cover
- Polymer Concrete, Flush Split Cover



Fasteners:

- Hex Head Coil Thread Bolt
- Penta Head Coil Thread Bolt



Detail: Bolt Down



Add On Options:

- Logos and Special Markings
- Marking Plate
- EMS Marker
- Rack Mount / Cable Rack
- Cable Arms
- Unistrut
- Pulling Eye
- Ground Buss
- Dividers

RAW MATERIAL SPECIFICATION

BODY : Material Property

BODY : Material Property	Test Method	Typical Value ¹
Density	ASTM D1505	0.960 to 0.980, g/cm ³
Tensile Strength, at break	ASTM D638	5,500 to 7,700 psi
Flexural Modulus	ASTM D790	400,000 to 500,000 psi
Impact Resistance	ASTM D5420	60.0 in-lb

¹ The values listed for physical property measurements are nominal values only. Certain physical property measurements are subject to variations consistent with the test methods and are within a generally accepted range for such values.

WARNING: Cancer - www.P65Warnings.ca.gov

Product modifications, including but not limited to, cutting for conduit access, or "mouseholes" may alter ratings and product performance listed within this document unless stated otherwise.

All information contained on this sheet is current at the time of publication.

Oldcastle reserves the right to discontinue or update product information without notice.

Revision 06/16/20

© 2020 Oldcastle Infrastructure, Inc