

# DURALITE™

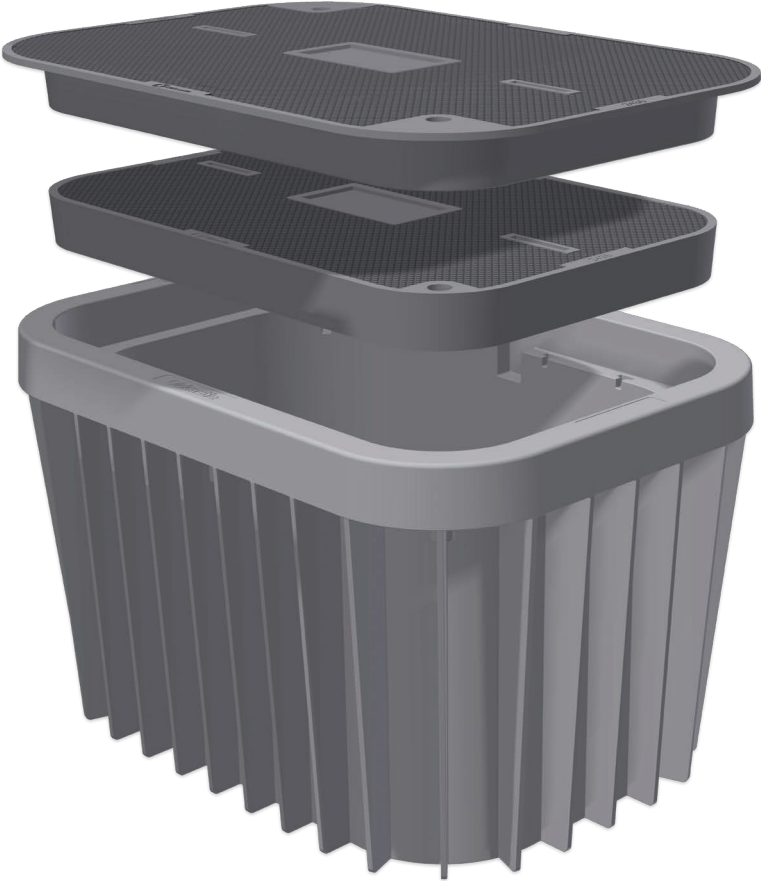
**LIGHTWEIGHT**

**SAFE HANDLING**

**FIRE RESISTANT**

**CRACK RESISTANT**

**MADE IN THE USA**



**PROTECTING**  
vital infrastructure.



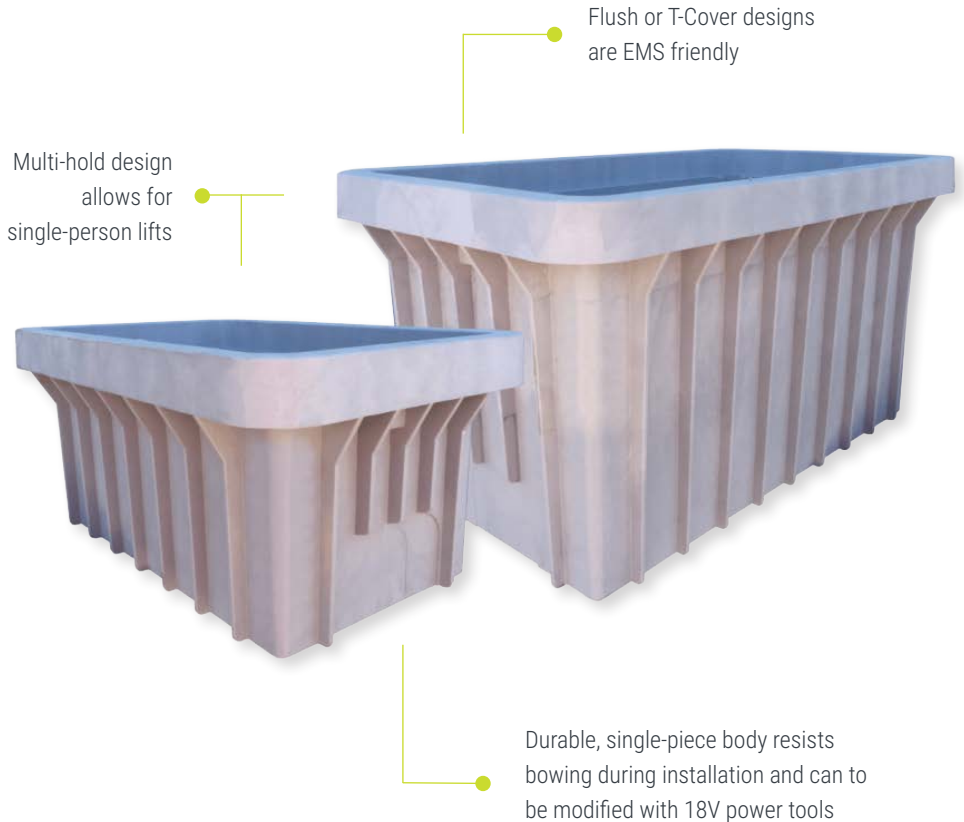
Duralite™ is engineered to withstand heavy loads and provide a durable, lightweight solution for the protection of and access to vital utility infrastructure. The impressively light Duralite™ covers weigh four times less than typical industry solutions, and can deliver Tier 22 performance in both T-cover and Flush designs. The lightweight design allows for safer installations while the uniquely strong material blend and construction doesn't sacrifice performance.

# SURPRISINGLY LIGHT.

## Exceptionally Strong.

### Features & Benefits:

- | Marking Plate Covers allow you to install logo plates in the field, carry less inventory, and get products faster.
- | Coil hardware ensures easy bolt down locking even under the toughest of construction sites.
- | Up to 75% lighter than Polymer Concrete. Lightweight products help reduce accidents and injuries.
- | Chip and crack resistant.
- | Fire resistant.
- | Mold resistant.
- | Salt resistant.



MODEL	SIZE (LXW)	DEPTHS	AVAILABLE COVERS	
1015	10" x 15"	12", 18"	Polymer Concrete	LW Duralite
1118	11" x 18"	12", 18", (24)"	Polymer Concrete	LW Duralite
1212	12" x 12"	12", 18", (24)"	Polymer Concrete	LW Duralite
1324	13" x 24"	12", 18", (36)"	Polymer Concrete	LW Duralite
1730	17" x 30"	12", 18", 24", (30)", (36)"	Polymer Concrete	LW Duralite
2436	24" x 36"	24", 18", 36"	Polymer Concrete	LW Duralite
3048	30" x 48"	18", 24", 36"	Polymer Concrete	LW Duralite
3660	36" x 60"	36"	LW Duralite	

<b>BODY MATERIAL</b>	Polyolefin Blend (Glass Fiber Reinforced Polymer Plastic)
<b>COVER MATERIAL</b>	Composite (Glass Fiber Reinforced SMC)
<b>WALL TYPE</b>	Straight
<b>PERFORMANCE</b>	Tier 15*, Tier 22
<b>RATING</b>	Medium Duty, Heavy Duty

\*Tier 15 is not available in 1015 and 3660 sizes.

Actual load rating is determined by the box and cover combinations. Dimensions may vary slightly.

KEY: (Stacked body)  Available soon