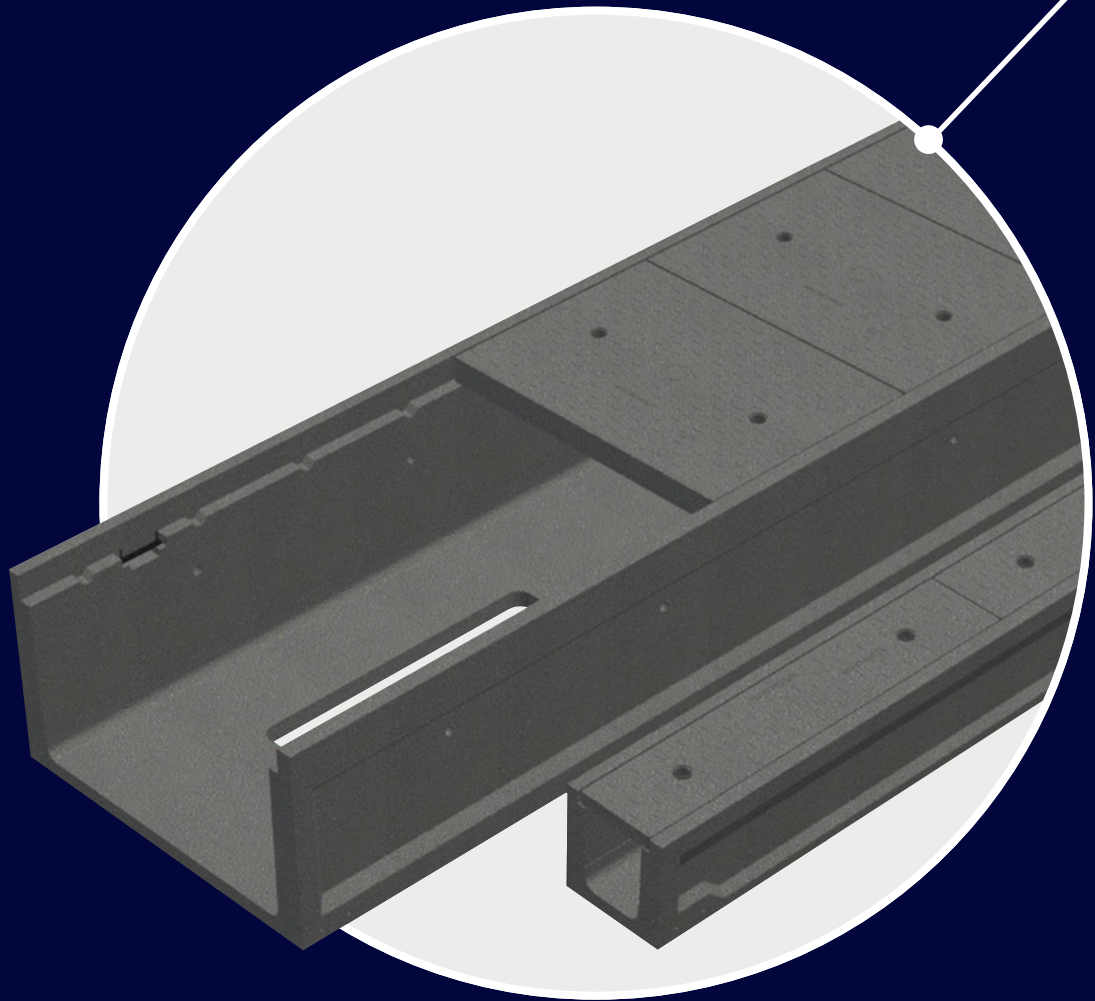


Plastibeton®

 **Oldcastle Infrastructure**™
A CRH COMPANY



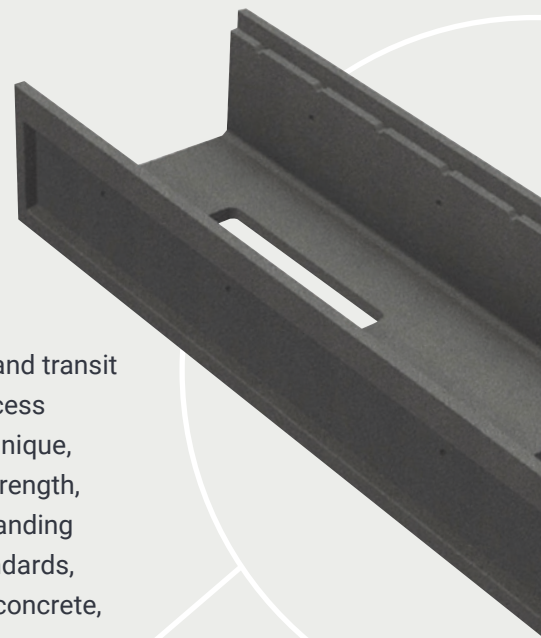
**The Solid Approach
to Trenching**



Outstanding strength and performance.

The Plastibeton® cable trench is a trusted system by power, utility, railroad and transit companies throughout North America to contain, protect and allow easy access to power, control, signal, communication, and fiber optic cables. Made of a unique, patented High-Density Polymer Concrete, Plastibeton offers flexibility and strength, as well as exceptional resistance to freeze/thaw conditions, providing outstanding vehicle load rating at any point. Designed and tested to exceed industry standards, with an unmatched strength to weight ratio, that is significantly lighter than concrete, Plastibeton reduces installation costs and is the safer cable trench choice.

Exceeding industry standards with an unmatched strength-to-weight ratio.





Lightweight Design

The lightest and strongest cable trench on the market. Many Plastibeton covers can be safely removed without mechanical equipment.



High-Strength

Our patented High-Density Polymer Concrete is four times stronger than standard concrete and unaffected by acids, salts, chemicals, or freeze/thaw cycles.



Engineered For You

Our skilled technical team of drafters and engineers will design a cable trench layout to fit your complex project needs.



Robust Product Line

Plastibeton is offered in a variety of widths and depths with a wide array of accessories and cover options to create a successful project.



Won't Crack Under Pressure

Designed and tested to exceed industry standards, providing unmatched strength-to-weight ratio and outstanding vehicle load rating at any point.

Available Covers

Plastibeton
32,000 LB Axle Load

Plastibeton ULW*
32,000 LB Axle Load

Plastibeton HD
64,000 LB Axle Load

Steel / Grated
64,000 LB Wheel Load

Custom Covers

*Available Soon

Options & Accessories

Locking Covers

Dividers

Cable Clips

Unistrut

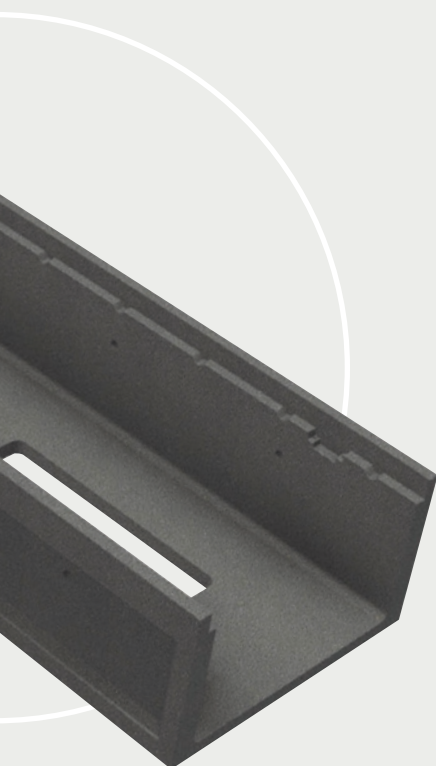
Cable Riser

Corner Protector

Firestop

Protection Rods

Attachment Plates





www.oldcastleinfrastructure.com | (888) 965-3227

Trusted partnerships.
Full scale solutions.