

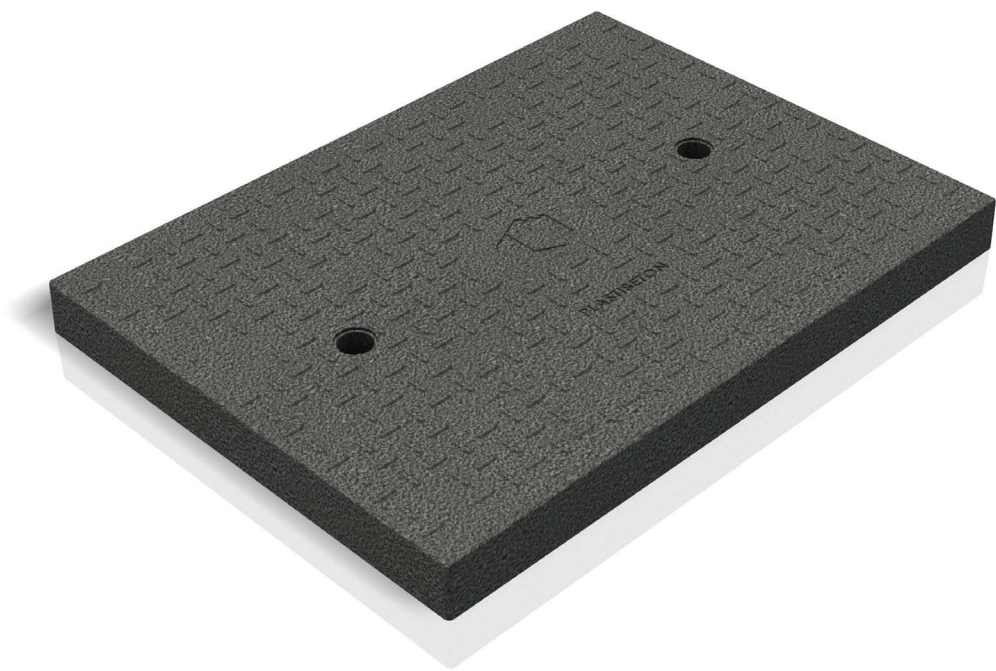
PLASTIBETON®

LW Covers

TRAFFIC RATED

16,000 LB WHEEL LOAD

25% WEIGHT REDUCTION



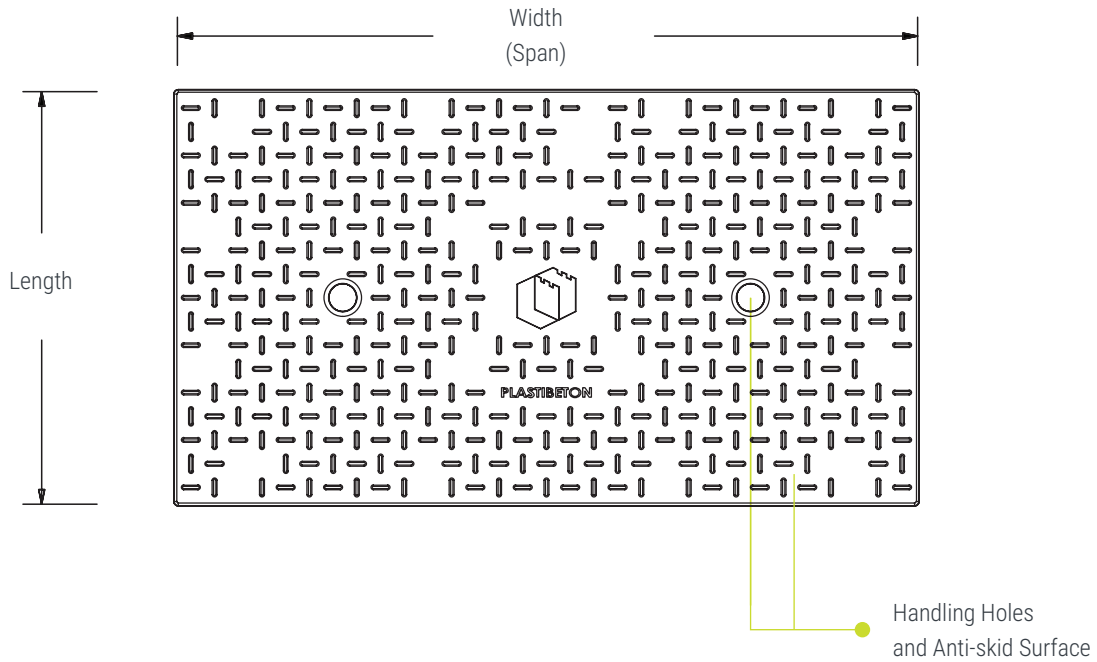
Safer and quicker
ACCESS



Our 16K trench covers have become even lighter. Oldcastle Infrastructure has developed a new, lightweight polymer concrete technology—reducing cover weight by more than 25%. Our Plastibeton® LW trench covers meet the same load rating and environmental performance that made Plastibeton® the industry leader in traffic rated cable trench. During installation or maintenance, these lightweight covers allow safer and quicker access to cables.

LIGHTWEIGHT

High performing.



MODEL	SIZE (WIDTH x LENGTH x THICKNESS)	WEIGHT	REDUCTION*	COVERS PER SECTION
TC12 LW	14" x 39 3/8" x 2 1/4"	56	25%	3
TC20 LW	22" x 39 3/8" x 2"	88	28%	3
TC30 LW	32" x 23 5/8" x 2 1/2"	95	28%	5
TC40 LW	42 3/8" x 23 5/8" x 3"	146	31%	5

Half Covers

TC20 Half LW	22" x 19 5/8" x 2"	54	25%	6
TC30 Half LW	32" x 11 11/16" x 2 1/2"	61	29%	10
TC40 Half LW	42 3/8" x 11 11/16" x 3"	95	31%	10

MATERIAL	Lightweight polymer concrete and sheet molding compound
PERFORMANCE	Traffic Rated
RATING	16,000 LB Wheel Load, 15 MPH Max

*Percentage of weight reduction compared to Plastibeton® standard covers.

Dimensions may vary slightly.

4-A-032 Revision 5/2021