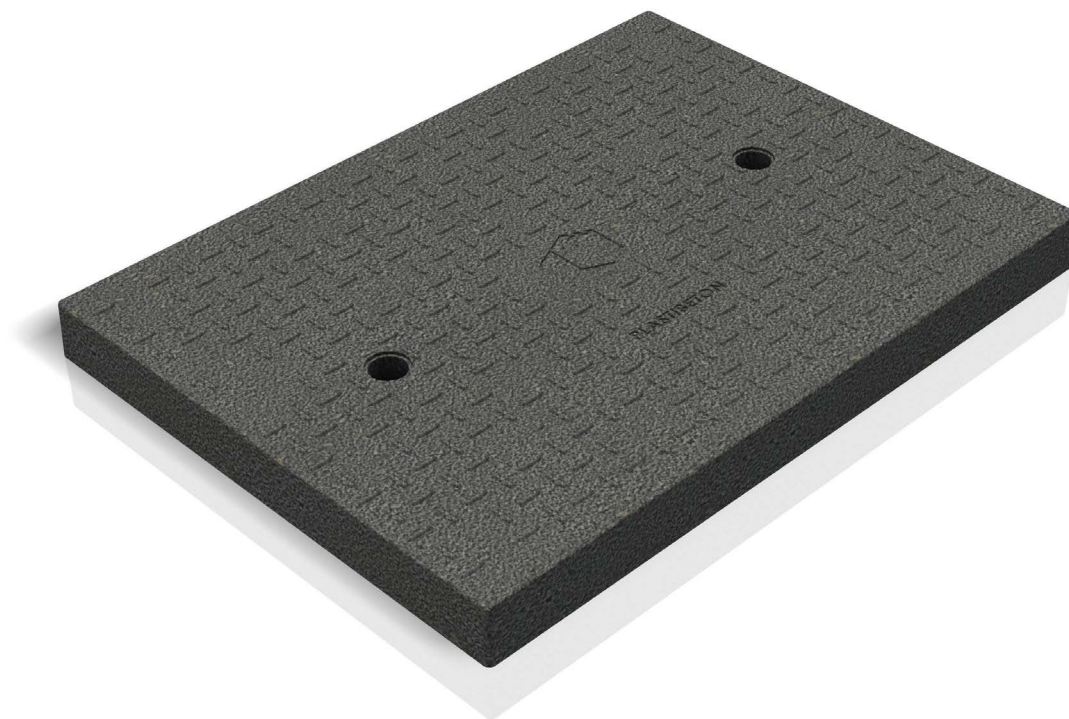


PLASTIBETON®

Covers

TRAFFIC RATED

16,000 LB WHEEL LOAD



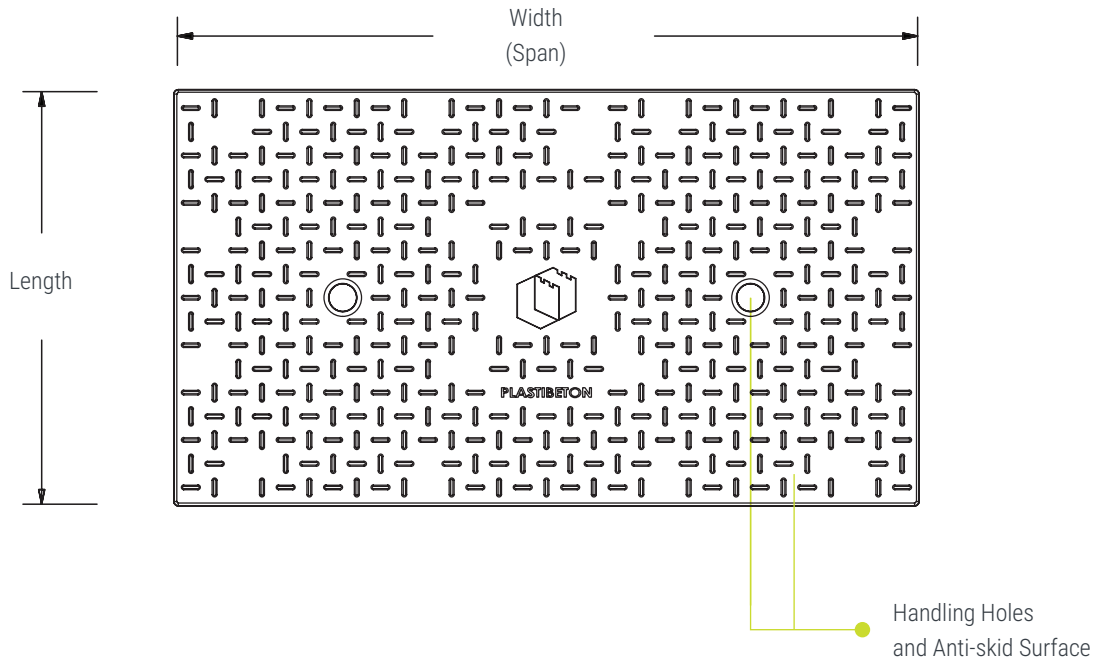
Outlast and
OUTPERFORM



The most trusted traffic rated trench on the market, and ready for the most demanding environments. Plastibeton® covers are manufactured using a unique “Duo-Mold” construction. This high pressure, high heat molding process forms polymer concrete and reinforcement into a uniform high strength cover. With a low resin content, Plastibeton® covers are not affected by acid, oils, or freeze/thaw cycles, which means they outlast and outperform both standard concrete and composite competition.

MOST TRUSTED

Traffic rated trench covers.



| MODEL | SIZE (WIDTH x LENGTH x THICKNESS) | WEIGHT | COVERS PER SECTION |
|-------|-----------------------------------|--------|--------------------|
| TC6 | 7 1/2" x 39 3/8" x 1 1/4" | 25 | 3 |
| TC12 | 14" x 39 3/8" x 2 1/4" | 75 | 3 |
| TC20 | 22" x 39 3/8" x 2" | 122 | 3 |
| TC30 | 32" x 23 5/8" x 2 1/2" | 132 | 5 |
| TC40 | 42 3/8" x 23 5/8" x 3" | 217 | 5 |

Half Covers

| | | | |
|-----------|--------------------------|-----|----|
| TC20 Half | 22" x 19 5/8" x 2" | 72 | 6 |
| TC30 Half | 32" x 11 11/16" x 2 1/2" | 86 | 10 |
| TC40 Half | 42 3/8" x 11 11/16" x 3" | 137 | 10 |

| | |
|--------------------|--|
| MATERIAL | High-density polymer concrete and sheet molding compound |
| PERFORMANCE | Traffic Rated |
| RATING | 16,000 LB Wheel Load, 15 MPH Max |

Dimensions may vary slightly.