

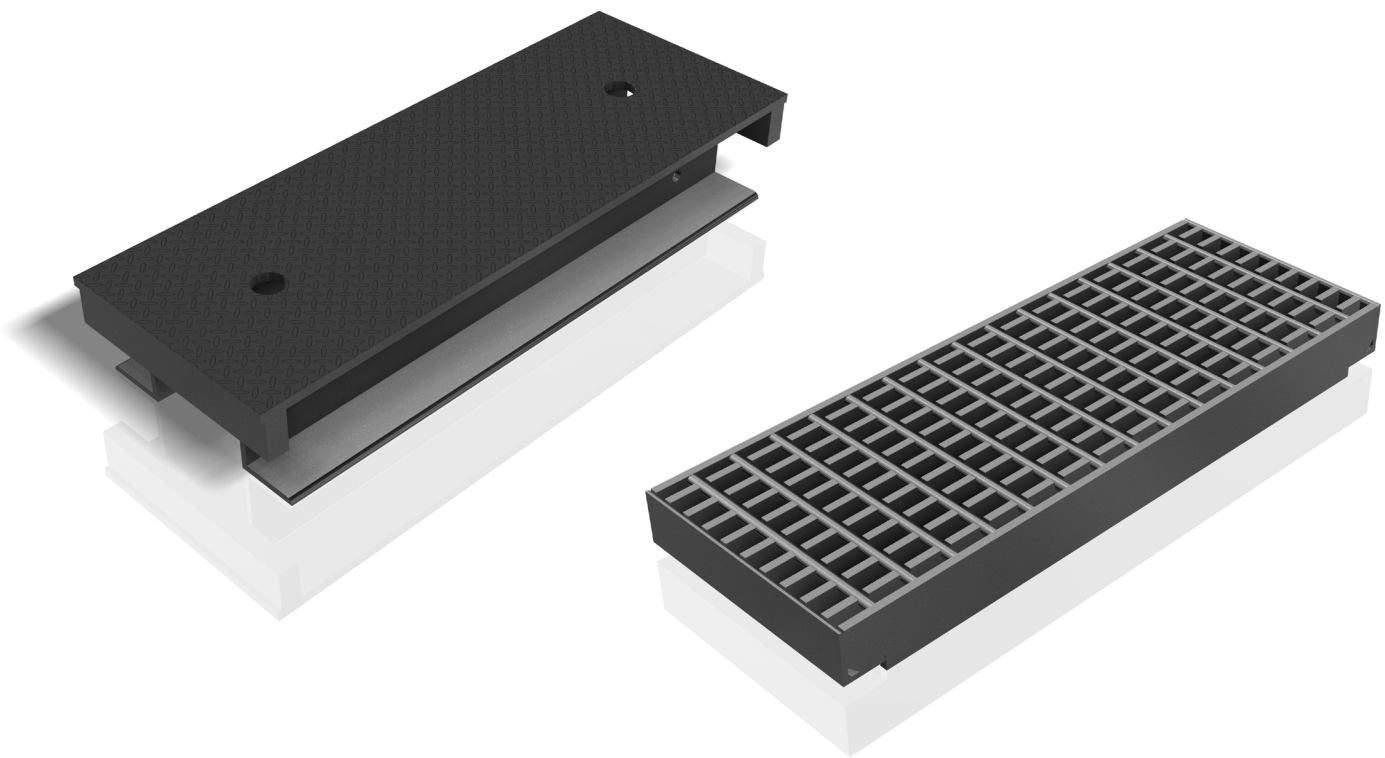
# PLASTIBETON®

## Steel Covers

**HEAVY DUTY**

**32,000 LB WHEEL LOAD**

**GALVANIZED STEEL**



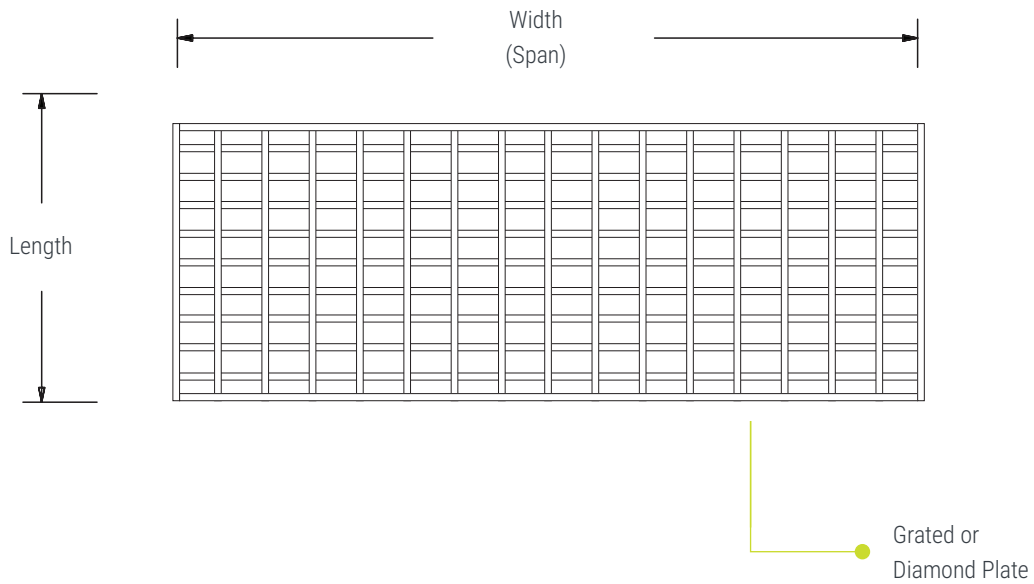
High-quality cover  
**OPTIONS**



Steel covers are recommended for road crossings with frequent traffic. Our covers are a high-quality, durable galvanized steel and are designed to drop-in to our standard Plastibeton® Cable Trench. They feature a slip-resistant, diamond plate surface. Grated covers are also available in power applications where cable de-rating and heat dissipation is required. They can be placed continuously or at intervals.

# DURABILITY

for high traffic areas.



MODEL	SIZE (WIDTH x LENGTH x THICKNESS)	WEIGHT	COVERS PER SECTION
TC6 Steel*	7 1/2" x 39 5/16" x 1 1/4"	58	3
TC6 Grated*	7 1/2" x 39 5/16" x 1 1/4"	50	3
TC12 Steel	14" x 19 9/16" x 2 1/4"	70	6
TC12 Grated	14" x 39 5/16" x 2 1/4"	125	3
TC20 Steel	22" x 11 11/16" x 2"	59	10
TC20 Grated	21 7/8" x 13" x 2"	88	9
TC30 Steel	32 1/8" x 11 11/16" x 2 1/2"	118	10
TC30 Grated	31 13/16" x 11 3/4" x 2 1/2"	119	10
TC40 Steel	42 1/2" x 11 11/16" x 3"	177	10
TC40 Grated	42 3/8" x 11 3/4" x 3"	205	10

<b>MATERIAL</b>	Galvanized Steel
<b>PERFORMANCE</b>	Traffic Rated
<b>RATING</b>	32,000 LB Wheel Load, 15 MPH Max

\*TC6 covers are 16,000 lb wheel load.

Dimensions may vary slightly.

4-A-034 Revision 5/2021