

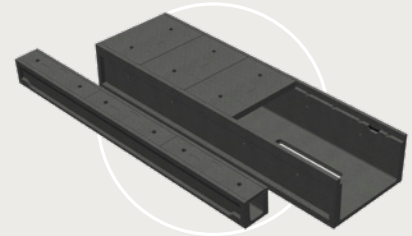
Plastibeton® Trench System

Product Offerings

The Plastibeton® trench system is trusted by power, utility, railroad, and transit companies throughout North America. Designed and tested to exceed industry standards and reduce installation costs, providing a safer cable trench choice.

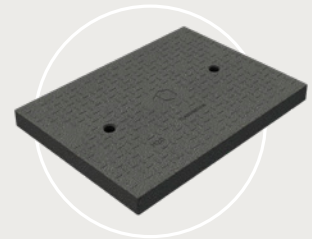
Trench

Plastibeton cable trench is made of a unique, patented material that offers exceptional resistance to freeze/thaw conditions and an unmatched strength to weight ratio. Plastibeton is 4x lighter than precast trench, reducing installation costs and providing a safer cable trench choice. Plastibeton can be configured for any site layout and design, and can be out-fitted with a range of cover options and accessories for cable management.



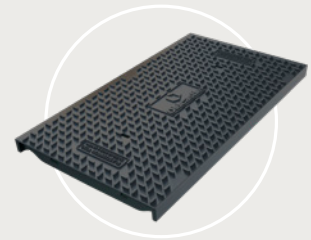
Standard Covers

Plastibeton standard covers are manufactured using a unique process to create a uniform, high strength cover that is not affected by acid, oils, or freeze/thaw cycles. Ready for the most demanding environments, they outlast and outperform both standard concrete and composite competition. 32,000 lb axle load.



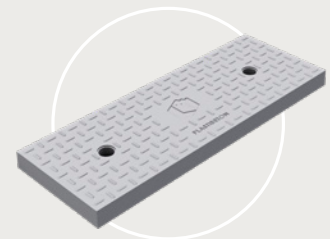
ULW Covers

Plastibeton ULW trench covers provide a high-performance solution with a lower overall installation and maintenance cost while meeting the same load rating and environmental performance that made Plastibeton the industry leader in traffic rated cable trench. These covers are easy to handle, allowing safer and quicker access to cables. 32,000 lb axle load.



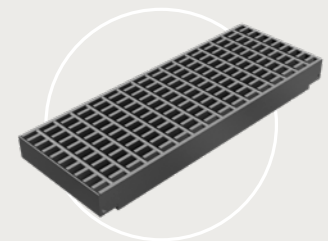
HD Covers

For trusted performance during the most strenuous traffic loadings, turn to the Plastibeton HD cover. These covers utilize extra reinforcement to double the load rating. 64,000 lb axle load.



Steel or Grate Covers

High-quality, durable galvanized steel covers, recommended for road crossings with frequent traffic. They feature a slip-resistant, diamond plate surface. Grated covers are also available in power applications where cable de-rating and heat dissipation is required. They can be placed continuously or at intervals.

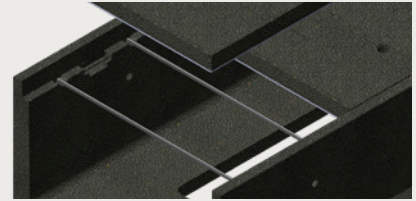


Plastibeton® Trench System

Accessories

Protection Rods

Protection rods can be installed after cables are run to protect from dropped covers. These are not required for any loading support.



Attachment Plates

Trench sections can be connected together using attachment plates.



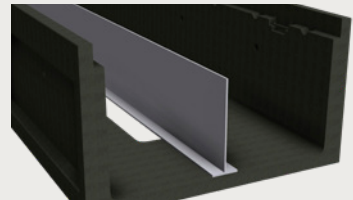
Fire Stop

Fire stops are designed to be inserted into vertical channels installed on the trench sidewalls.



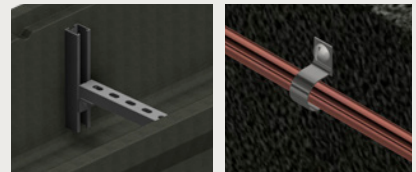
Dividers

Easily separate different types of cable in a single trench with dividers.



Unistrut & Cable Clips

Free up more space on your trench floors by securing cable to the sidewalls with cable clips or elevate them with unistruts.



Cable Risers

Cable risers are made of high-grade aluminum and designed to support and house your vertical cabling up and into the control building. They are available in standard or custom sizes, with removable front panels to allow access for maintenance and service.



Trusted partnerships.
Full scale solutions.



www.oldcastleinfrastructure.com | (888) 965-3227