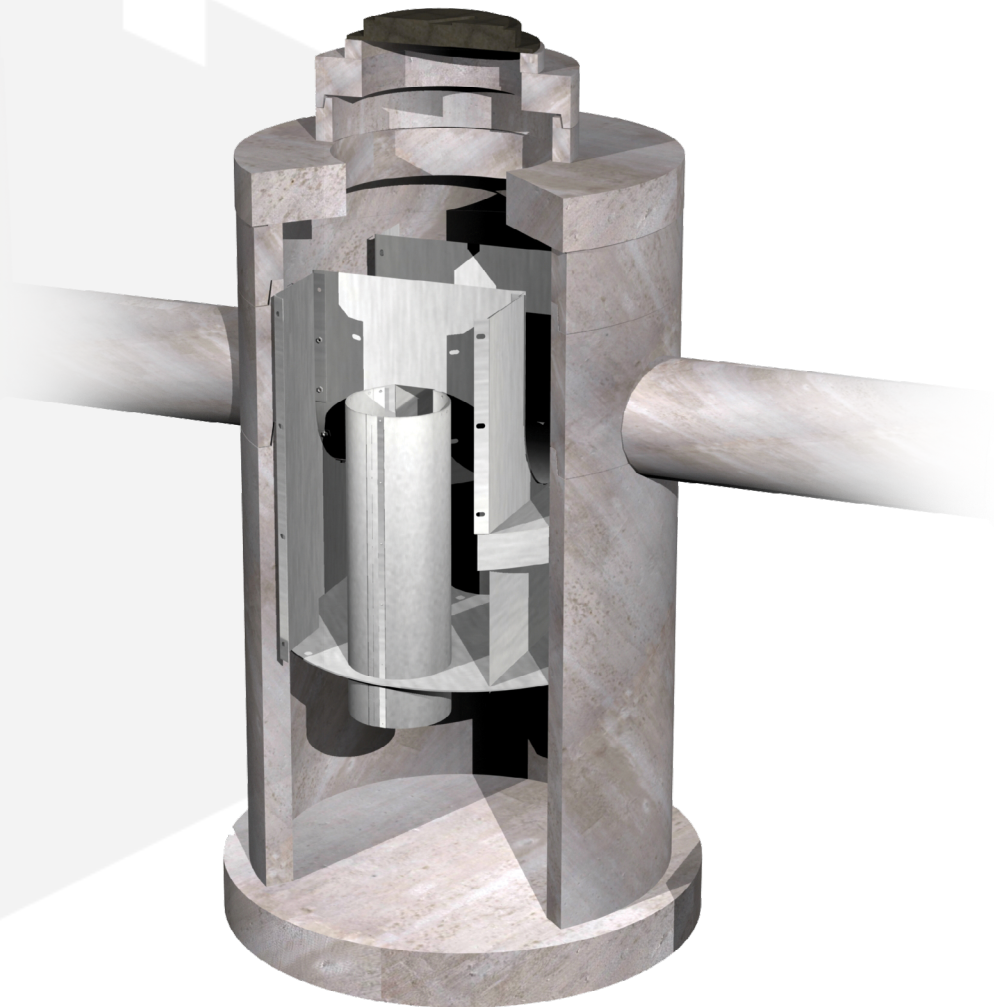


DUAL-VORTEX SEPARATOR (DVS)

Inspection & Maintenance Guide



Oldcastle Infrastructure™
A CRH COMPANY

DUAL-VORTEX SEPARATOR (DVS)

DESCRIPTION

The Dual-Vortex Separator (DVS) is a hydrodynamic stormwater treatment device used to remove pollutants from urban runoff. Impervious surfaces and other urban and suburban landscapes generate a variety of contaminants that can enter stormwater and pollute downstream receiving waters. The DVS is designed to capture and retain sediment as well as floating trash, debris and oils. The concentration of metals and other constituents associated with sediment or floating pollutants may also be reduced.

FUNCTION

Stormwater runoff enters the DVS unit through an inlet pipe. Influent flow is split evenly between two vortex tubes by a V-shaped weir. The shape and diameter of the vortex tubes promotes circular motion of the incoming stormwater at increased velocities to enhance particle settling through centrifugal force. The system is also designed with an extended flow path to maximize hydraulic residence time which allows increased time to settle out solids. Settled pollutants are collected in an isolated storage area at the bottom of the structure, while floating trash, debris and petroleum hydrocarbons are retained behind baffles that contain the vortex chambers. During peak runoff events, flow in excess of design treatment flow overtops the bypass weir and exits the system without entering the treatment chambers to interrupt the treatment process or re-entrain captured pollutants. Treatment and bypass flows exit the system through an outlet pipe that is plumbed at the same elevation as the inlet pipe.

CONFIGURATION

The internal components of the DVS system are fabricated from stainless steel and mounted in a manhole or vault structure. The system is typically delivered as a complete unit for installation by the contractor. Installation includes excavation, preparation of the base rock, setting the unit, plumbing the inlet and outlet piping, backfill and placement of the finished surface at grade. Access to the installed system is allowed through ductile iron casting or hatch covers. The number of access points provided is dependent on the size and configuration of the system.

MAINTENANCE OVERVIEW

State and local regulations require all stormwater management systems to be inspected on a regular basis and maintained as necessary to ensure performance and protect downstream receiving waters. Without maintenance, excessive pollutant buildup can limit system performance by reducing the operating capacity and increase the potential for scouring of pollutants during periods of high flow.

INSPECTION EQUIPMENT

The following equipment is helpful when conducting DVS inspections:

- | Recording device (pen and paper form, voice recorder, iPad, etc.)
- | Suitable clothing (appropriate footwear, gloves, hardhat, safety glasses, etc.)
- | Traffic control equipment (cones, barricades, signage, flagging, etc.)
- | Manhole hook or pry bar
- | Flashlight
- | Tape measure
- | Measuring stick or sludge sampler
- | Long-handled net (optional)
- | Replacement Sorbent Pads

INSPECTION PROCEDURES

Inspection is essential to consistent system performance and is easily completed. Inspection is typically conducted a minimum of twice per year but since pollutant transport and deposition varies from site to site, a site-specific maintenance frequency should be established during the first two or three years of operation.

DVS inspections are visual and are conducted without entering the unit. To complete an inspection, safety measures including traffic control should be deployed before the access covers are removed. Once the covers have been removed, the following items should be checked and recorded (see form provided on page 5) to determine whether maintenance is required:

- | Inspect the internal components and note whether there are any broken or missing parts. In the unlikely event that internal parts are broken or missing, contact Oldcastle Infrastructure at (800) 579-8819 to determine appropriate corrective action.
- | Note whether the inlet or outlet pipe is blocked or obstructed.
- | Observe, quantify and record the accumulation of floating trash and debris in the baffled chambers around the vortex tubes. The significance of accumulated floating trash and debris is a matter of judgement. A long-handled net may be used to retrieve the bulk of trash and debris at the time of inspection if full maintenance due to accumulation of oils or sediment is not yet warranted.
- | Observe, quantify and record the accumulation of oils in the baffled chambers around the vortex tubes. If sorbent pads have been used to absorb free oil and grease, observe and record their condition. Unless the sorbent pads are tethered to the internal baffles, spent pads may be netted and replaced at the time of inspection. The significance of accumulated floating oils is a matter of judgement. However, if there is evidence of an oil or fuel spill, immediate maintenance is warranted.
- | Finally, observe, quantify and record the accumulation of sediment in the sediment storage sump. A calibrated dipstick, tape measure or sludge sampler may be used to determine the amount of accumulated sediment. The depth of sediment may be determined by calculating the difference between the measurement from the rim of the DVS to the top of the accumulated sediment and the measurement from the rim of the DVS to the bottom of the DVS structure. Finding the top of the accumulated sediment takes some practice and a light touch, but increasing resistance as the measuring device is lowered toward the bottom of the unit indicates the top of the accumulated sediment.

MAINTENANCE INDICATORS

Maintenance should be scheduled if any of the following conditions are identified during inspection:

- | Internal components are broken or missing.
- | Inlet or outlet piping is obstructed.
- | The accumulation of floating trash and debris that cannot be retrieved with a net and/or oil in the baffled chambers around the vortex tubes is significant.
- | Tethered sorbent pads, if used, are dirty or saturated.
- | The sediment level in the sediment storage sump is greater than 12 inches. The capacity of the sediment sump is 18 inches of sediment depth for all DVS models. Sediment depths greater than 18 inches will begin to affect the performance of the system.

MAINTENANCE EQUIPMENT

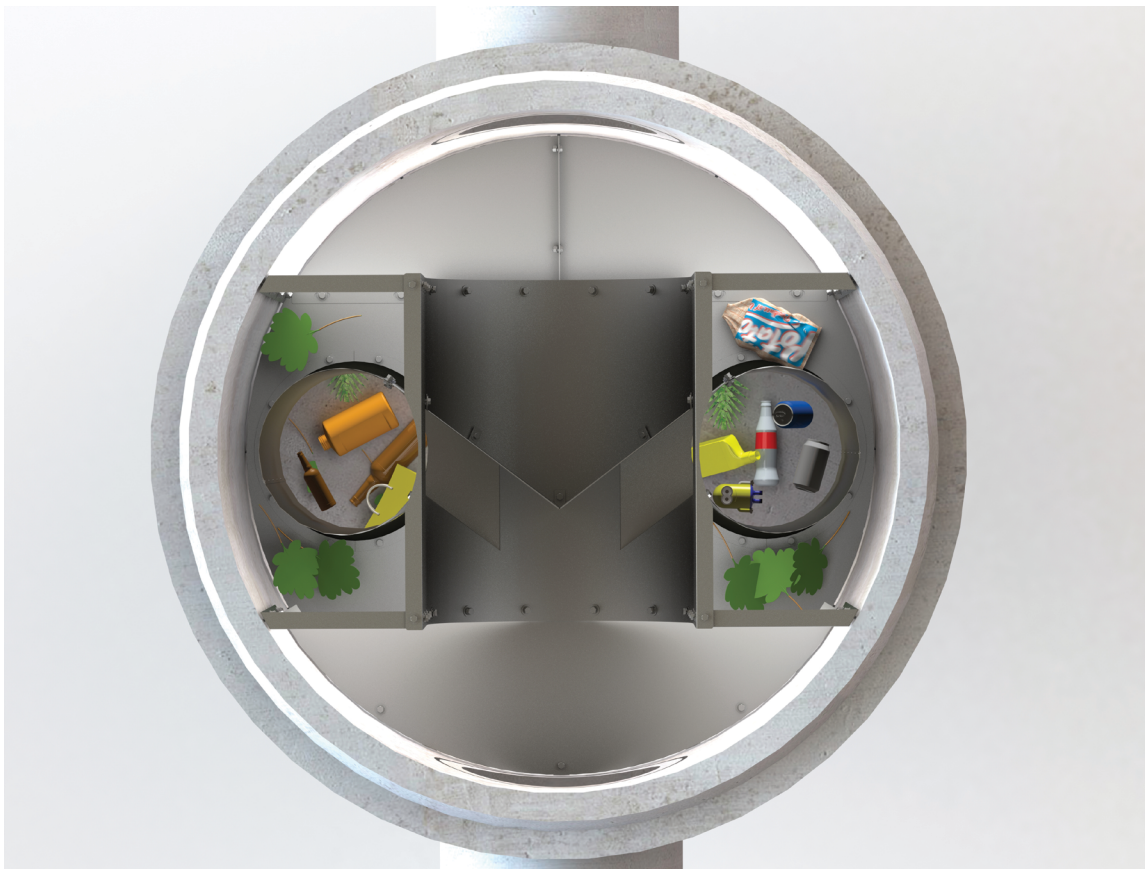
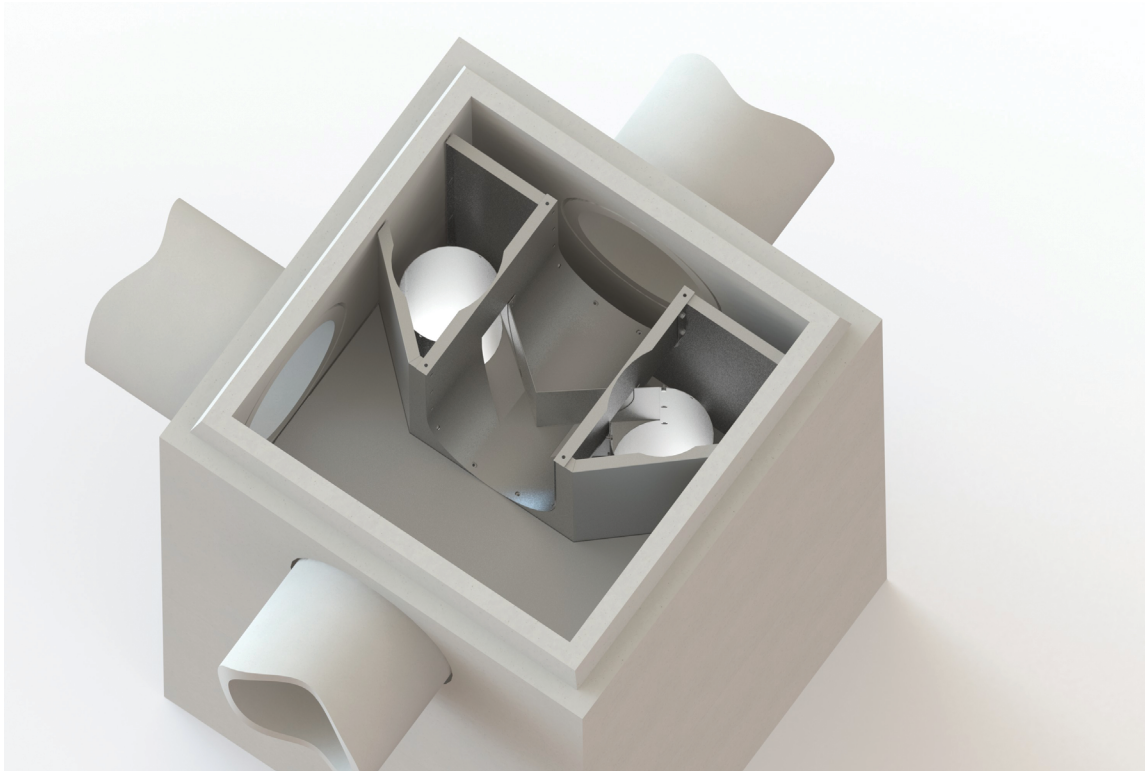
The following equipment is helpful when conducting DVS maintenance:

- | Suitable clothing (appropriate footwear, gloves, hardhat, safety glasses, etc.)
- | Traffic control equipment (cones, barricades, signage, flagging, etc.)
- | Manhole hook or pry bar
- | Confined space entry equipment, if needed
- | Flashlight
- | Tape measure
- | Sorbent pads
- | Vacuum truck

MAINTENANCE PROCEDURES

Maintenance should be conducted during dry weather when no flow is entering the system. All maintenance, except possibly the attachment of sorbent pads (if required), may be conducted without entering the DVS structure. Once safety measures such as traffic control are deployed, the access covers may be removed and the following activities may be conducted to complete maintenance:

- | Remove floating trash, debris and oils from the water surface using an extension on the end of the boom hose of the vacuum truck. Continue using the vacuum truck to completely dewater the structure through the vortex tubes and evacuate all accumulated sediment from the sediment sump. Some jetting may be required to fully evacuate sediment from the sump. This is easily achieved by inserting a jet hose through the vortex tube opposite the tube used for vacuum hose access.
- | If sorbent pads are required and are tethered to the structure, only personnel that are OSHA Confined Space Entry trained and certified may enter the structure to remove and replace the spent pads.
- | The structure does not need to be refilled with water after maintenance is complete. The system will fill with water when the next storm event occurs.
- | All material removed from the DVS during maintenance must be disposed of in accordance with local regulations. In most cases, the material may be handled in the same manner as disposal of material removed from sumped catch basins or manholes.



DUAL-VORTEX SEPARATOR INSPECTION AND MAINTENANCE LOG

DVS Model _____

Inspection Date _____

Location _____

Condition of Internal Components

Notes: _____

☐ Good ☐ Damaged ☐ Missing

Inlet or Outlet Blockage or Obstruction

Notes: _____

☐ Yes ☐ No

Floating Trash and Debris

Notes: _____

☐ Significant ☐ Not Significant

Floating Oils

Notes: _____

☐ Significant ☐ Not Significant ☐ Spill

Sediment Depth

Notes: _____

☐ Inches of Sediment _____

Maintenance Requirements

☐ Yes - Schedule Maintenance ☐ No - Schedule Re-Inspection

