

Carson®

NexGen 0020 Meter Pits



20,000 lb Vertical Load

Easy Field Modifications

Readily Available

A Complete Meter Pit Solution



Carson® NexGen 20-inch diameter meter pits are a stronger, highly-engineered alternative to cut pipe and previous models. Improvements include 20,000 lb vertical load while reducing weight and allowing for easy-cut field modifications. White material provides a bright interior view and fluted sidewalls allow stacking for easy transport to the installation site and reducing inventory space. Maximize your value and order the meter pit, locatable ring and cover as a kit.

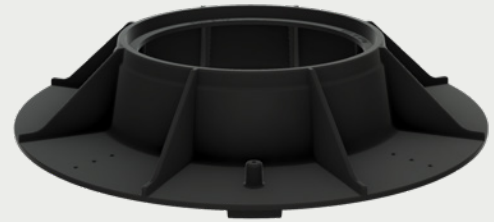
Revolutionary new design.



Extensions available in 2", 3", 4", 6", and 12" depths.



Ring and covers with AMR/AMI and locking options.



Bright white interior view.

Molded mouseholes and footing.

Options and Accessories:

- Ring and Cover
- Extensions

*Covers are marked "Water Meter"

**Kits include body, ring and cover.

Dimensions may vary slightly.

Actual load rating is determined by the box and cover combinations.

Part	Depth	Description	SKU
Body	24"	20" Dia. Body with 2 Mouseholes	00202240
	30"		00202300
	36"		00202360
Ext	2"	Extension	00203502
	3"		00203503
	4"		00203504
	6"		00203506
	12"		00203512
Ring	N/A	Ring	00207500
Flush Cover w/ Marking*	N/A	Solid, Penta w/ Worm Gear	12004500
		2"x4.5"x.25" AMR hole, Penta w/Worm Gear	12004510
		2"x3" x.25" AMR hole, Penta w/Worm Gear	12004520
		2"x6" x.25" AMR hole, Penta w/Worm Gear	12004530
		AMR Bracket, Penta w/ Worm Gear	12004540
T-Cover w/ Marking*	N/A	Solid, Penta w/ Worm Gear	12004600
		2"x4.5"x.25" AMR hole, Penta w/Worm Gear	12004610
		2"x3"x.25" AMR hole, Penta w/Worm Gear	12004620
		2"x6"x.25" AMR hole, Penta w/Worm Gear	12004630
		AMR Bracket, Penta w/ Worm Gear	12004640
Kit**	24"	Body: 2 Mouseholes, Cover: Flush, Solid	00208240
	24"	Body: 2 Mouseholes, Cover: T-Cover, Solid	00208246
	30"	Body: 2 Mouseholes, Cover: Flush, Solid	00208300
	30"	Body: 2 Mouseholes, Cover: T-Cover, Solid	00208306
	36"	Body: 2 Mouseholes, Cover: Flush, Solid	00208360
	36"	Body: 2 Mouseholes, Cover: T-Cover, Solid	00208366

Material	HDPE
Wall Type	Reinforced
Performance	20K
Rating	20,000lb vertical load

4-A-010 Revision 8/2023

Trusted partnerships.
Full scale solutions.



www.oldcastleinfrastructure.com | (888) 965-3227