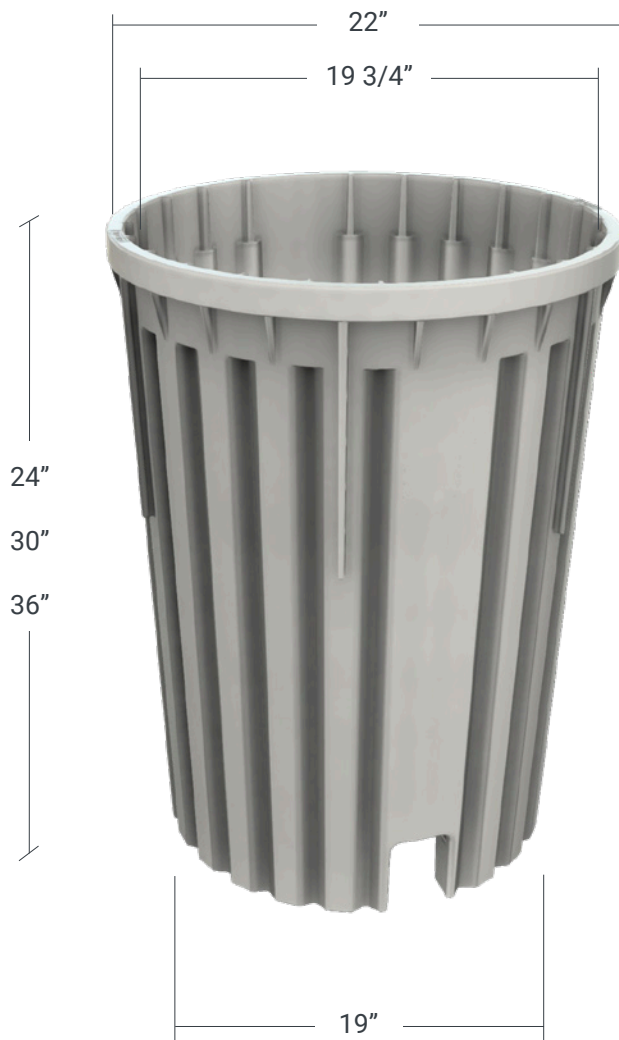


NexGen 0020



Material & Style

HDPE

Straight Wall, Fluted

White

0020-24

17.5 lbs

0020-30

19.0 lbs

0020-36

23.5 lbs

Options

Mouseholes

Extensions

Performance

20,000 lbs Vertical Loading

For use in non-vehicular traffic situations only. Weights and dimensions may vary slightly. Actual load rating is determined by the box and cover combination.

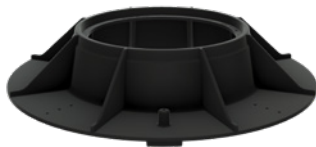
*Requires Ring and Cover

NexGen 0020

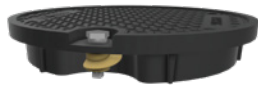


Options

- Cover Options:
- HDPE, Flush Solid
 - HDPE, Flush with AMR



Ring:



- Add On Options
- Worm Gear Hardware (HDPE Covers)
 - Thermo Pack



- Extensions:
- 2" Extension
 - 3" Extension
 - 4" Extension
 - 6" Extension
 - 12" Extension

Raw Material Specification

Material Property	Test Method	Typical Value ¹
Tensile Strength	ASTM D638	≥ 3,000 psi
Flexural Modulus	ASTM D790	120,000 min, not to exceed 240,000 psi
Chemical Resistance	ASTM D543	Very Resistant
Water Absorption	ASTM D570	Less than 2% weight change
UV Resistance	ASTM G154	Retention of 75% of physical properties after 1,000 hrs

¹ The values listed for physical property measurements are nominal values only. Certain physical property measurements are subject to variations consistent with the test methods and are within a generally accepted range for such values.

⚠ WARNING: Cancer - www.P65Warnings.ca.gov

All information contained on this sheet is current at the time of publication. Oldcastle reserves the right to discontinue or update product information without notice.

© 2023 Oldcastle Infrastructure, Inc.