

# Underground Enclosures

## Marking Plate Installation Guide

### Installation Methods

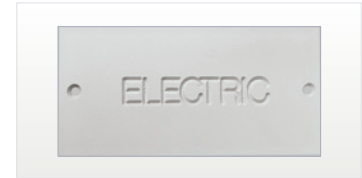
#### 2x8

- Adhesive



#### 4x8

- Adhesive
- Bolt Down
- Adhesive + Bolt Down



### Required Items

- Cover
- Marking Plate
- Equipment and Materials for Your Install Method
- Compressed Air for Debris Removal

### Equipment and Materials

#### Adhesive Installation

- Latex/Silicone Gloves
- Caulk Gun
- Adhesive: Seamer Mate or Geocel 2320 ONLY
- 3-5 lb weight
- Safety Glasses
- Clean rags
- Cleaner: Xylene/Acetone/Mineral Spirits

#### Bolt Down Installation

- Spanner Bit Head Screwdriver
- (2) 10-24 X 1/2 Flat Head Spanner Bolts

### Preparation and Installation

For optimal results, cover and marking plate should be clean and dry. If possible, allow the parts to come to the same temperature. Room temperature is preferred but not absolutely necessary. Remove any large foreign debris from the cover (i.e., dust, water, ice, mud) and allow it to dry before installation. Use clean rags to wipe the recessed area with cleaner and use compressed air to remove any small remaining debris.

#### 1. Adhesive Installation

- 1.1.** Apply a moderate amount of adhesive to the back of the marking plate in a 1/8" bead so that it runs the full length of the plate at an equal distance from the edge and between each bead (2"x8") or in a wave-like pattern with a border (4"x8"). Using excessive adhesive will slow curing process. (Figure 1)
- 1.2.** Wipe any excess adhesive off using a rag and cleaner. Apply a 3-5 lb. weight and let it sit for 30 minutes to ensure that the adhesive sets to form a permanent bond.

Figure 1

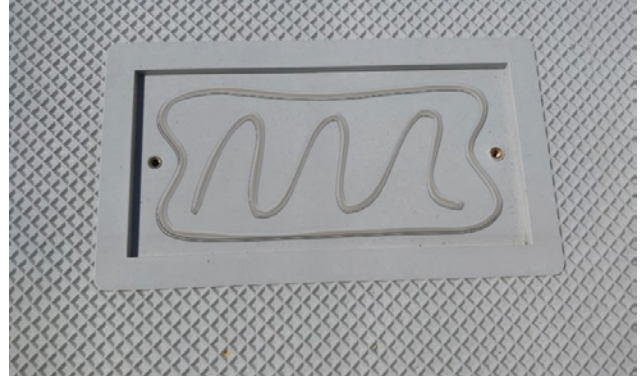
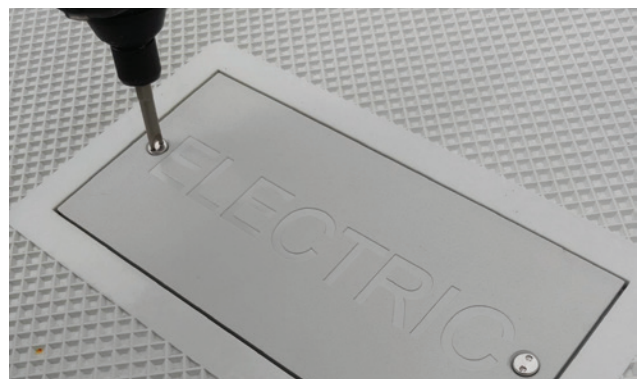


Figure 2



Figure 3



## 2. Bolt Down Installation

- 2.1. Using the spanner bit, hand-tighten the two spanner bolts into the pre-drilled holes of the marking plate (Figure 3) securing it to the cover.
- 2.2. If adhesive is used, apply continual pressure to the top of the marking plate for 10 seconds. Tack-free time is 10-20 minutes and full cure is approximately 24 hours.