

# Easy Patch

## Information & Installation Guide

### Easy Field-Repair For Metal Or Fiberglass

Easy Patch is the quick and simple way to field-repair damaged metal or fiberglass sectionalizing cabinets, transformer pads, and ground-sleeves. Easy Patch has a two-year shelf life when stored in its sealed package.

#### No sealing, mixing or brushing needed.

Simply peel off the backing paper and press it firmly on to the damaged surface. Easy Patch is soft and pliable, will mold to virtually any shape, and bonds to almost any clean, dry surface like metal, fiberglass, concrete, and most plastics. It cures quickly when exposed to UV Light (daylight) and once hardened, provides a permanent, heat-resistant and waterproof repair.

3" x 6" Patch      Part #: **PATC-100-36HP**

9" x 12" Patch    Part #: **PATC-100-912HP**



### Technical Information

Easy Patch is an ultra violet (UV) light curable Glass Reinforced Polyester (GRP) material, manufactured in sheet form. The matrix of isophthalic resin, e-type glass reinforcement, inert fillers and a photo-initiator is sandwiched between 2 nylon films. A further black UV film provides for handling in daylight.

Easy Patch is a special low styrene formulation polyester which contains approximately one third of the usual two component liquid polyester resins. The nylon films which minimize emissions and facilitate handling and shaping, can be marked out when transferring templates.

When fully cured all styrene emissions cease, unlike conventional resins where emissions continue for a considerable time. Easy Patch minimizes the risk of tainting and containment vessels can be returned to production quickly. Similarly, little heat is generated by Easy Patch whereas the strong exotherm of conventional resins can create problems with shrinkage. Due to the easier and safer handling, high tensile strength, minimal shrinkage, high resistance against UV degradation, Easy Patch is the preferred GRP solution for many applications.

# Easy Patch

## Information & Installation Guide

### Required Items

- Easy Patch (3" x 6" or 9" x 12")
- Sanding block

### Repair Instructions

1. Lightly sand the area to be repaired.
2. Cut the patch to the desired size.
3. Place the patch into place. A second patch may be placed inside if desired (optional).
4. Allow the patch to harden. This process may take between 10 minutes to 1 hour depending on sunlight.
5. Once the patch has hardened, lightly sand the patch.
6. If desired, the patch may be painted.

Figure 1



Figure 2

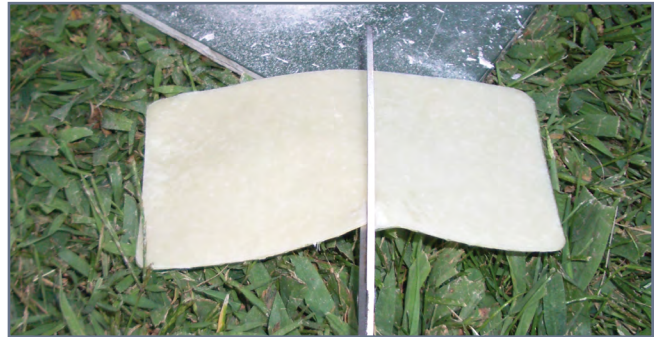


Figure 3

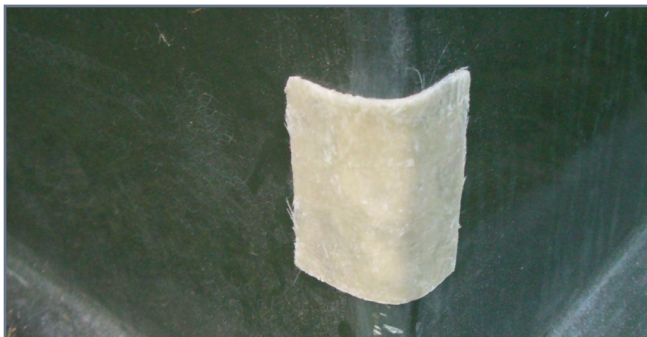


Figure 4

