**SECTION / CUTAWAY VIEW**

SCALE: NONE

NOTES:

1. INSTALL GEOGRID LAYER, (TENSAR™ BX1200 OR EQUIVALENT) IN ACCORDANCE WITH MANUFACTURER RECOMMENDATIONS.
2. SYSTEM ENCASED ENTIRELY WITH NONWOVEN POLYPROPYLENE GEOTEXTILE FILTER FABRIC AS REQUIRED.
3. FIELD POURED CONCRETE COLLAR REQUIRED AROUND ALL ACCESS COVERS & HATCHES, BY OTHERS.
4. ALL EXTERNAL PIPING & ANGLES BY OTHERS. REFER TO PLANS.



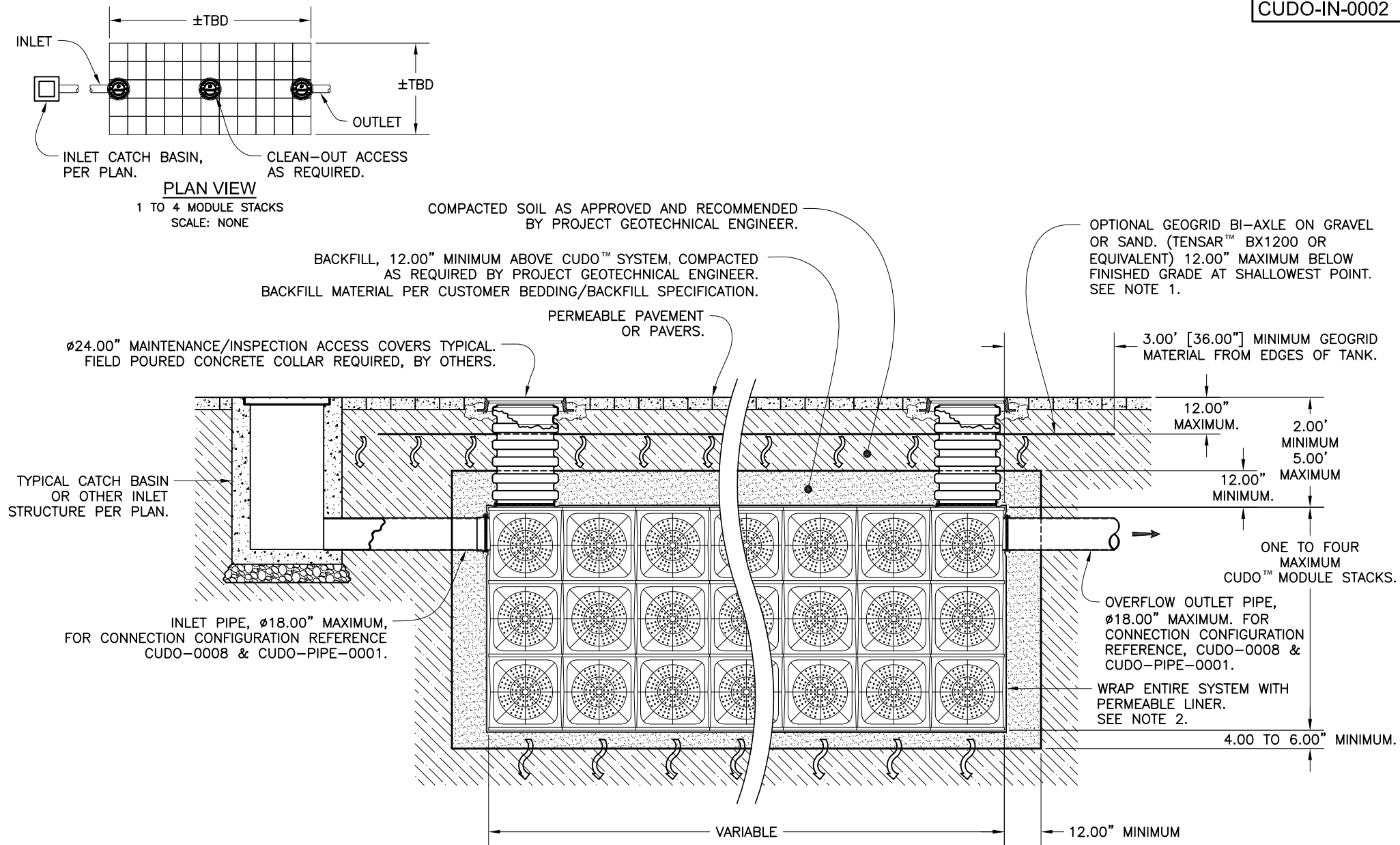
CUDO®
Stormwater Infiltration
System - Typical Installation Detail
Impermeable Pavement Area



7921 Southpark Plaza, Suite 200 | Littleton, CO | 80120 | Ph: 800.579.8819 |

THIS DOCUMENT IS THE PROPERTY OF OLDCASTLE PRECAST, INC. IT IS SUBMITTED FOR REFERENCE PURPOSES ONLY AND SHALL NOT BE USED IN ANY WAY INJURIOUS TO THE INTERESTS OF SAID COMPANY. COPYRIGHT © 2018 OLDCASTLE PRECAST, INC. ALL RIGHTS RESERVED.

DRAWING NO. CUDO-IN-0001	REV C	ECO ECO-0154 ZHD 2/6/18	DATE JPR 7/21/08	SHEET 1 OF 1
-----------------------------	----------	-------------------------------	---------------------	--------------



NOTES:

1. INSTALL GEOGRID LAYER, (TENSAR™ BX1200 OR EQUIVALENT) IN ACCORDANCE WITH MANUFACTURER RECOMMENDATIONS.
2. SYSTEM ENCASED ENTIRELY WITH NONWOVEN POLYPROPYLENE GEOTEXTILE FILTER FABRIC AS REQUIRED.
3. FIELD POURED CONCRETE COLLAR REQUIRED AROUND ALL ACCESS COVERS & HATCHES, BY OTHERS.
4. ALL EXTERNAL PIPING & ANGLES BY OTHERS. REFER TO PLANS.

SECTION / CUTAWAY VIEW

SCALE: NONE



CUDO®
Stormwater Infiltration
System - Typical Installation Detail
Permeable Pavement Area

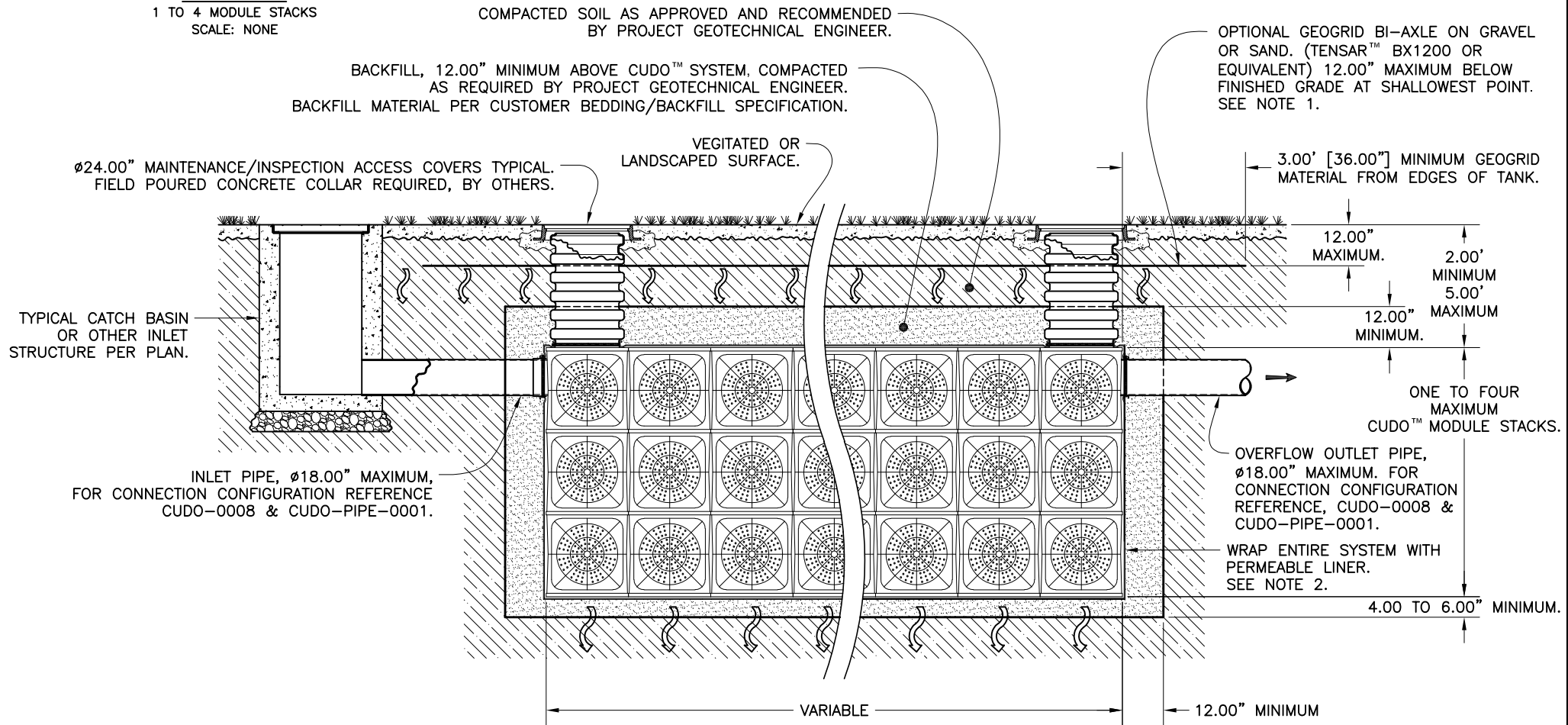
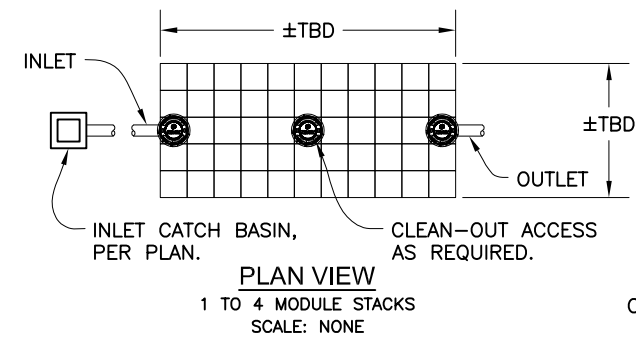


Oldcastle Infrastructure™
A CRH COMPANY

7921 Southpark Plaza, Suite 200 | Littleton, CO | 80120 | Ph: 800.579.8819 |

THIS DOCUMENT IS THE PROPERTY OF OLDCASTLE PRECAST, INC. IT IS SUBMITTED FOR REFERENCE PURPOSES ONLY AND SHALL NOT BE USED IN ANY WAY INJURIOUS TO THE INTERESTS OF SAID COMPANY. COPYRIGHT © 2018 OLDCASTLE PRECAST, INC. ALL RIGHTS RESERVED.

DRAWING NO. CUDO-IN-0002	REV C	ECO ECO-0154 ZHD 2/6/18	DATE JPR 7/21/08	SHEET 1 OF 1
-----------------------------	----------	-------------------------------	---------------------	--------------

**SECTION / CUTAWAY VIEW**

SCALE: NONE

NOTES:

1. INSTALL GEOGRID LAYER, (TENSAR™ BX1200 OR EQUIVALENT) IN ACCORDANCE WITH MANUFACTURER RECOMMENDATIONS.
2. SYSTEM ENCASED ENTIRELY WITH NONWOVEN POLYPROPYLENE GEOTEXTILE FILTER FABRIC AS REQUIRED.
3. FIELD POURED CONCRETE COLLAR REQUIRED AROUND ALL ACCESS COVERS & HATCHES, BY OTHERS.
4. ALL EXTERNAL PIPING & ANGLES BY OTHERS. REFER TO PLANS.



CUDO®
Stormwater Infiltration
System - Typical Installation Detail
Vegetated Permeable Area



7921 Southpark Plaza, Suite 200 | Littleton, CO | 80120 | Ph: 800.579.8819 |

THIS DOCUMENT IS THE PROPERTY OF OLDCASTLE PRECAST, INC. IT IS SUBMITTED FOR REFERENCE PURPOSES ONLY AND SHALL NOT BE USED IN ANY WAY INJURIOUS TO THE INTERESTS OF SAID COMPANY. COPYRIGHT © 2018 OLDCASTLE PRECAST, INC. ALL RIGHTS RESERVED.

DRAWING NO. CUDO-IN-0003	REV C	ECO ECO-0154 ZHD 2/6/18	DATE JPR 7/21/08	SHEET 1 OF 1
-----------------------------	----------	-------------------------------	---------------------	--------------