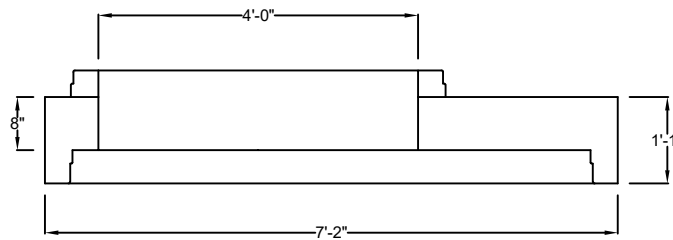
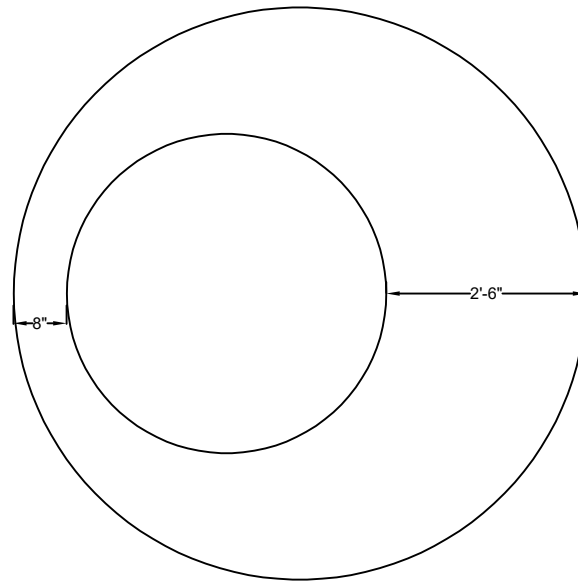
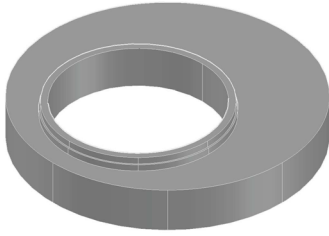


Precast Concrete 72" Dia. x 48" Dia. Reducer



Weight: 3,500 lbs



Standard Features

- 4500 PSI Concrete @ 28 Days
- Conforms to ASTM C-478
- Design for H-20 Traffic Loading
- Manufactured in NPCA Certified Plant

Standard Options

- Gasket Joint



7800 Adobe Rd.
Kalamazoo, MI 49009
269-342-0539

www.qualityprecastinc.com