

# Carson®

## TrussT

Fast Installation

Easy To Modify

Reinforced Design



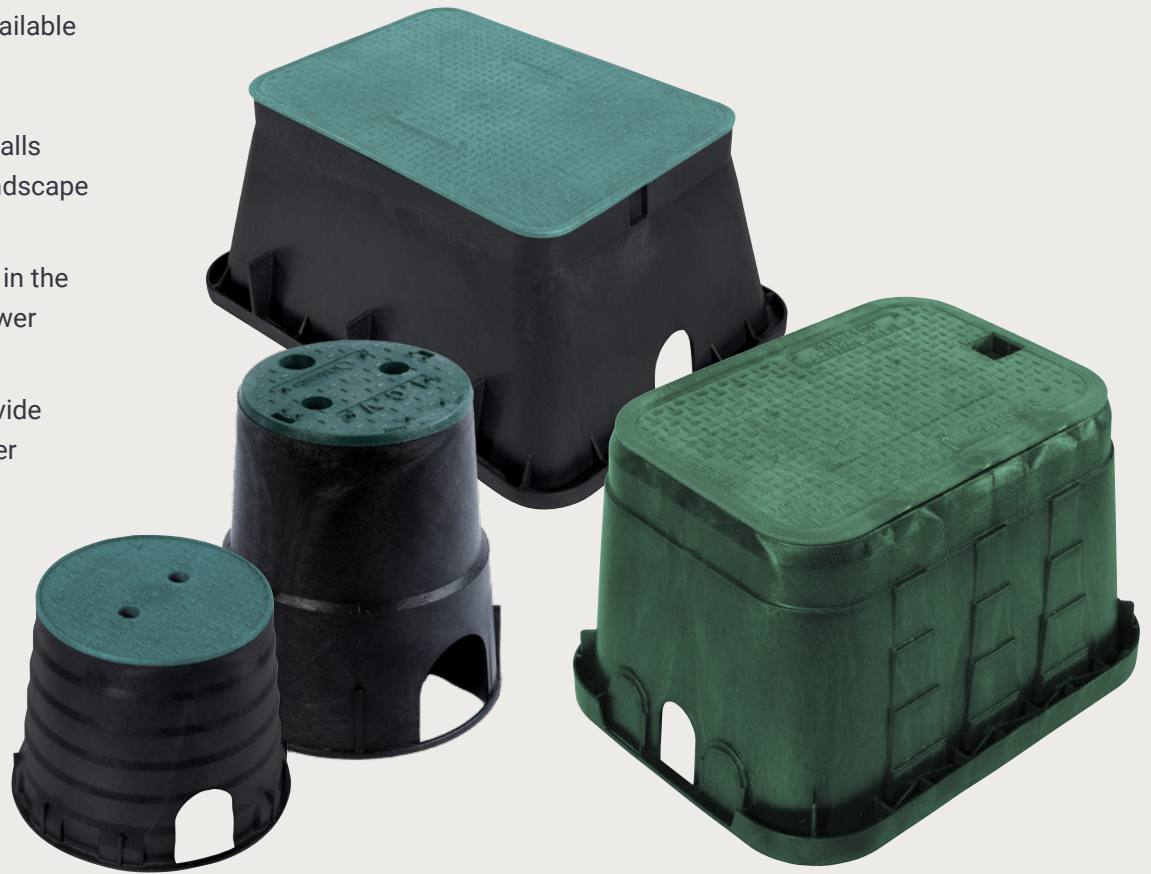
**Engineered  
for Value**

Carson® TrussT valve boxes are value-engineered to achieve top-down strength for lasting access to underground systems. Sidewalls feature “truss” reinforcements to withstand passing pressure from push-mowers, domestic riding mowers, and other do-it-yourself gardening equipment. Carson high-density polyethylene (HDPE) products deliver reliable, chemical and water resistant performance and install with ease.


# A name you trust. Durability you expect.

Carson® TrussT components are available in black and green.

- Reinforced sidewalls withstand DIY landscape equipment.
- Easily modifiable in the field with 18V power tools.
- UV Inhibitors provide maximum weather resistance.



Model	Size (LxW)	Shape	Depths	
708	6" Dia	Round	9"	
0011	10" Dia		10"	
1015	10" x 15"	Rectangle	6", 12"	18"
0012	15" x 20"		6", 12"	
<b>Material</b>	HDPE			
<b>Wall Type</b>	Straight and Flared			
<b>Performance</b>	Pedestrian			
<b>Rating</b>	Greenbelt			

 Requires an extension unit.

*Dimensions may vary slightly.*

4-A-013 Revision 3/2023

Trusted partnerships.  
Full scale solutions.



www.oldcastleinfrastructure.com | (888) 965-3227