

TerraMod™

MODULAR BIORETENTION SYSTEM

Meets LID bioretention requirements

Installs faster and more safely

Requires less excavation

Fits well in constrained spaces



Simple
Local
Green

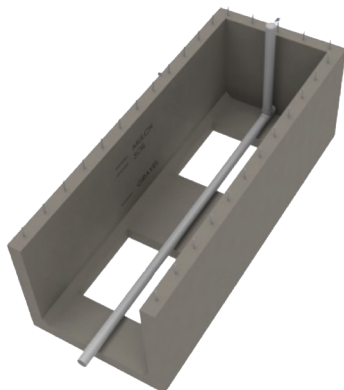
Created to streamline and enhance bioretention applications, TerraMod™ offers a green, localized and simple solution for stormwater management. TerraMod's modular design allows you to meet local bioretention specifications. Due to the flexibility and variety of usage, TerraMod expedites design and installation through prefabrication and minimal onsite assembly.

Simplified Bioretention System

TerraMod is compatible with any locally-defined bioretention guidelines. Save construction time and labor by eliminating Cast-In-Place.



Efficient integration of bioretention in tight sidewalk applications.



TerraMod shipped with vaults and underdrain

- | Contractor responsible for underdrain installation
- | Prefilter optional

Media not included

- | Mix and depth defined by local regulations
- | Sourced separately

Vegetation not included

- | Defer to landscape architect

Green Infrastructure

TerraMod is a green stormwater management solution, created to meet your application's LID goals.

Easy Installation

System components arrive ready with minimal assembly required at the jobsite for faster, safer installation. Set and backfill systems on same day. No need to wait for concrete to cure.

Equivalency Approved

Granted "functional equivalency" by Washington State Department of Ecology, TerraMod may be designed using the same standards as any nonproprietary bioretention planter box.

Modular Design

Designers have the flexibility to incorporate TerraMod modules in almost any configuration.

Optional Modules

Available modules offer integrated trash capture and bypass.

Locally Pre-Fabricated

TerraMod systems are produced in our local facilities to meet quality standards.

SIZING INFORMATION / CA ONLY

Available widths (ft):	Available Depth (ft):
3'	4'
3.5'	
4'	Available length (ft):
5'	10'



Check out our new Design Tools:
<https://oldcastleinfrastructure.com/design-tools-overview/>

www.oldcastleinfrastructure.com | (888) 965-3227