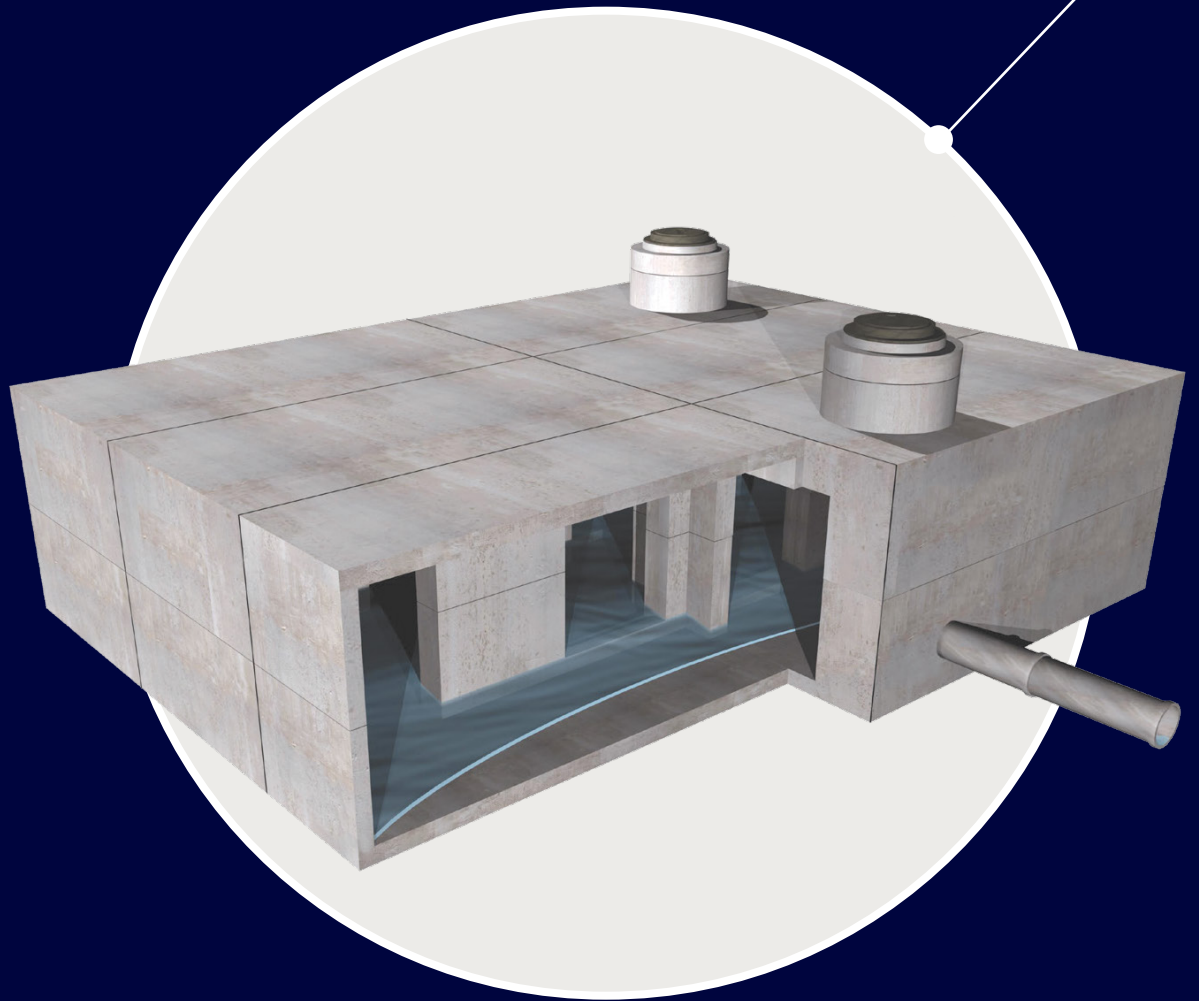


StormCapture®

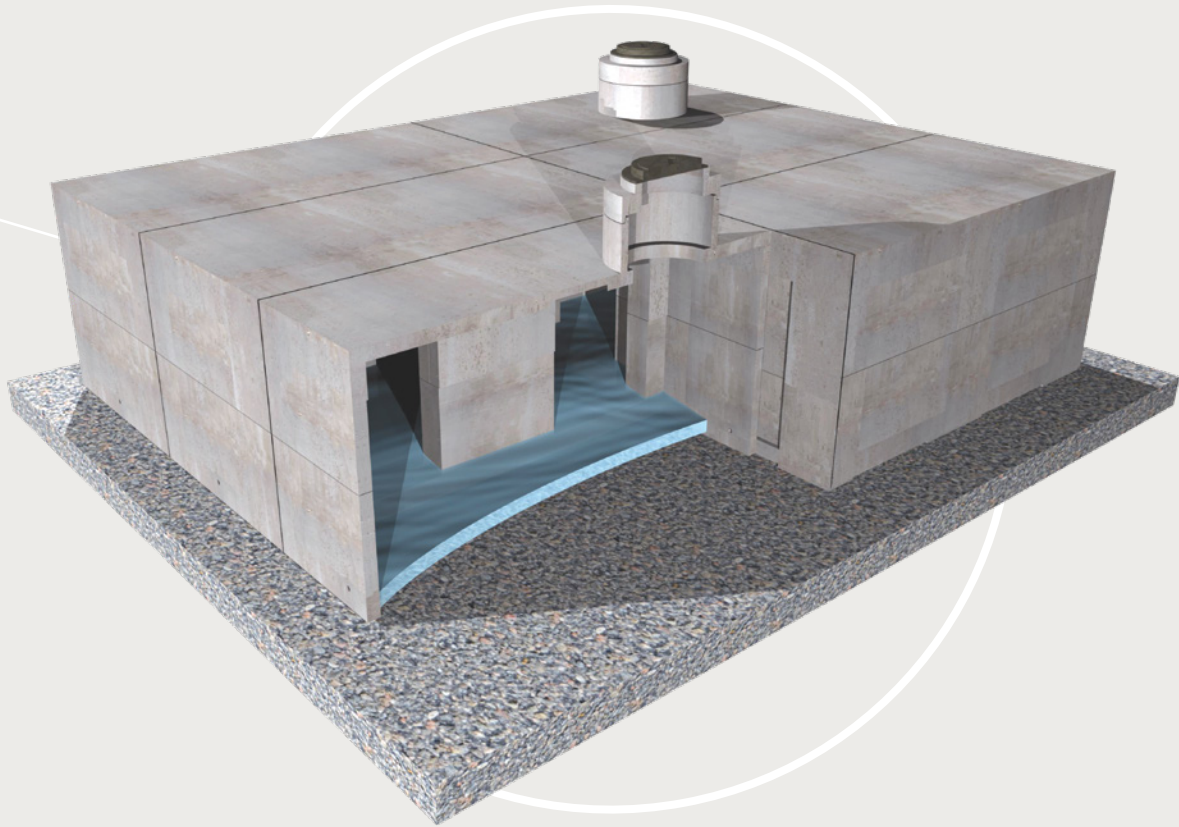


**Detention, Retention
and Infiltration.**

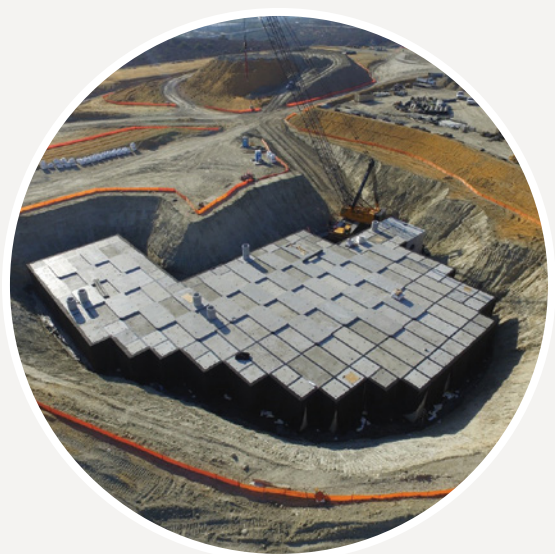
StormCapture®

Modular Stormwater Management System

For detention, retention, infiltration, treatment and harvesting.



Same-day staging and installation.



Easily customize design footprint to optimize and meet any site needs.

StormCapture System

Backfill Requirements

Modules are typically backfilled with existing site materials to save time and money.

Custom Sizes

Available in internal heights from 2' to 14' to best-fit site layout.

Design Assistance

Let our professionals help design and optimize for your specific project needs.

Easy and Safe to Install

Industry leading strength within a system that is not unnecessarily complicated design makes StormCapture safer, easier and faster with minimal handling.

Large Storage Capacity

Smaller system footprint for greater design flexibility.

Modular Design

Precast concrete modules measure 8' wide by 16' long OD, (7' x 15' ID), with customizable heights.

Traffic Loading

Industry leading 6" minimum cover requirement.

Treatment Train

Easily integrated with pre-treatment, post-treatment, or both to meet any project requirements.

StormCapture Advantages

Fast Service

Get help from our national engineering team with layouts and specifications to meet your project's requirements.

Easy installation

Highly competitive installation and maintenance costs.

Structurally Superior

Designed to the latest codes for HS-20-44 (full truckload plus impact).

Maintenance Friendly

The system is maintainable for long-term sustainability.

LID

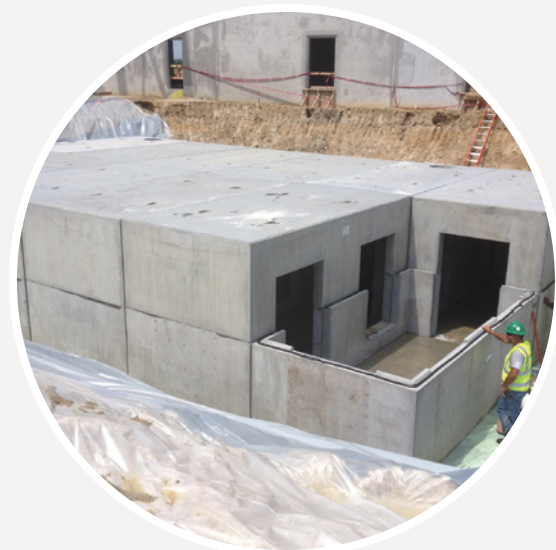
Ideal for Low-Impact Development (LID).

LEED

Eligible for LEED v4.1 credits. Talk to your sales representative for more information.



Industry leading minimum cover requirements makes construction sequencing easier.



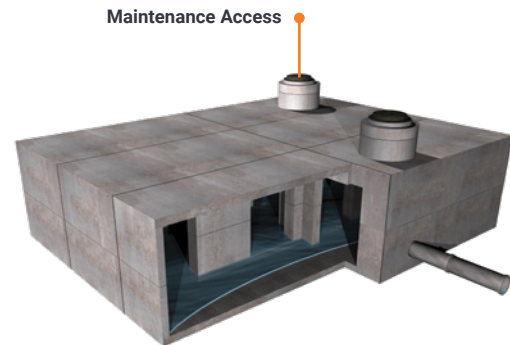
Simple design improves installation safety and reduces time and handling.

Applications

From a simple detention system that slows down runoff and prevents storm drain overloading, to a stormwater treatment system that improves water quality, StormCapture offers a total stormwater management system for any job site. With numerous options for infiltration, detention, retention, treatment and harvesting, StormCapture is the solution for your stormwater management needs. Let us show you how we can design and customize a solution for you.

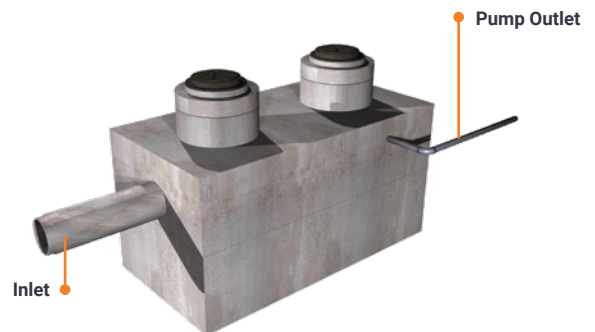
Detention

Provides cost-effective, site-specific applications where stormwater needs to be detained and then discharged at a controlled rate.



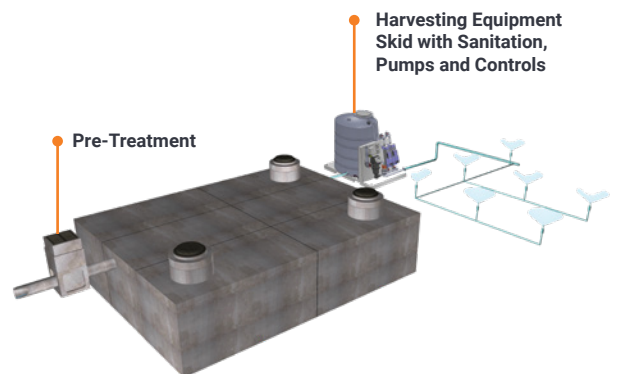
Cisterns

Provides space-efficient and sustainable long-term storage for harvested storm and rain water. StormCapture cisterns are available as single modules for smaller applications, as well as multi-module systems for storage solutions up to hundreds of thousands of gallons.



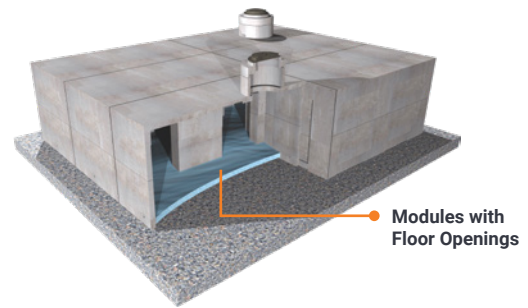
Harvesting

Harvesting systems enable the collection, storage, cleaning, and recycling of stormwater and greywater to reduce or replace the consumption of municipal potable water. StormCapture provides space-efficient and sustainable long-term storage for harvested storm and rainwater.



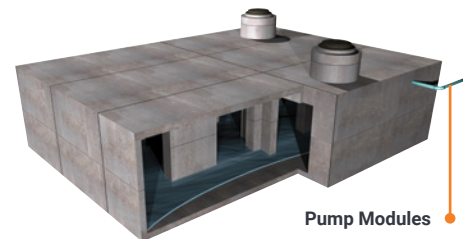
Infiltration

Eliminate the issues created with discharging stormwater offsite by using a StormCapture exfiltration system to infiltrate stormwater into the soil for natural treatment and to replenish local aquifers. In applications where soils are conducive to the natural infiltration process, StormCapture exfiltration systems are an effective, efficient and environmentally-sound choice.



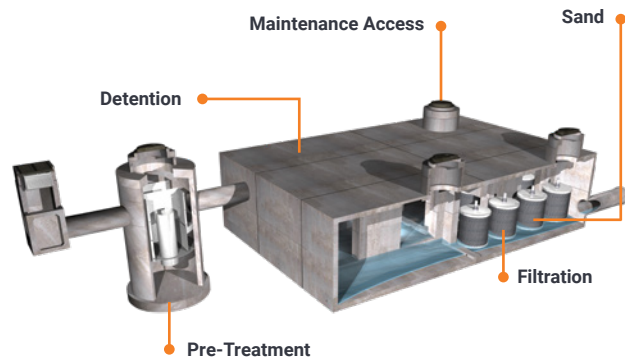
Retention

Provides efficient rain water retention before controlled discharge into a storm drain system by allowing retention to be placed under parking lots and roadways with very little cover, as well as in non-traffic areas. StormCapture retention systems are available as single modules for smaller applications, as well as multi-module systems for storage solutions up to hundreds of thousands of gallons.



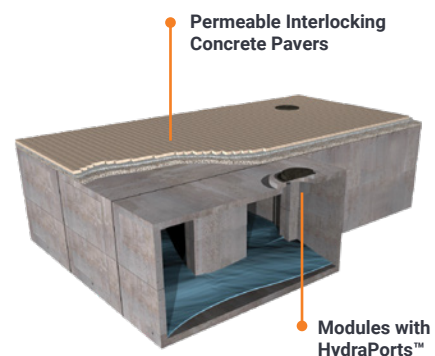
Treatment

Stormwater treatment options such as pre-treatment, post-treatment, oil water separators and sand filters are available as stand-alone systems, or may be integrated with StormCapture. These treatment units prevent contaminants from entering water systems and allow for cleaner discharge and/or harvesting of stormwater.



PermeCapture™

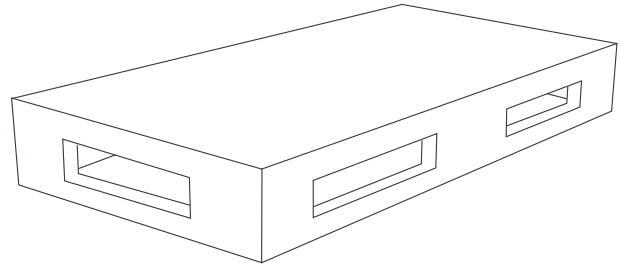
Combines the advantages and versatility of precast modules with the aesthetics and performance of permeable, interlocking pavers, providing a stand alone, low-maintenance, low-impact development solution for stormwater retention, detention, reuse and ground water recharge.



StormCapture Configurations

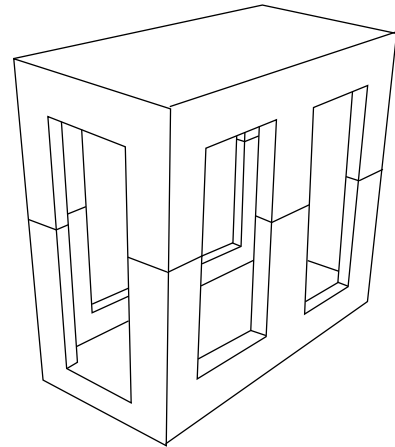
SC1

Single piece modules can be used for applications from 2' to 7' tall and are typically installed on minimally compacted gravel base. Appropriate for cisterns, infiltration, detention and retention systems. Can be configured as a base with a top slab for detention or a top-only for infiltration.



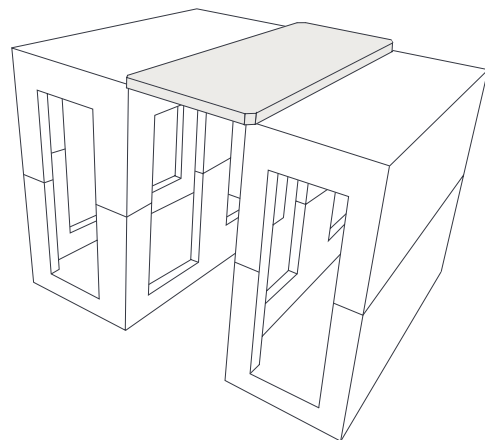
SC2

Two piece modules can be used for applications from 6' to 14' tall for maximum storage capacity in a condensed footprint. Appropriate for cisterns, infiltration, detention and retention systems. SC2 modules are typically installed on compacted native subgrade.



Link Slab®

Unique design allows for significant reduction in the quantity of modules and associated costs, while providing maximum storage capacity. Can be used with both SC1 and SC2 design configurations (diagram shows SC2 only).



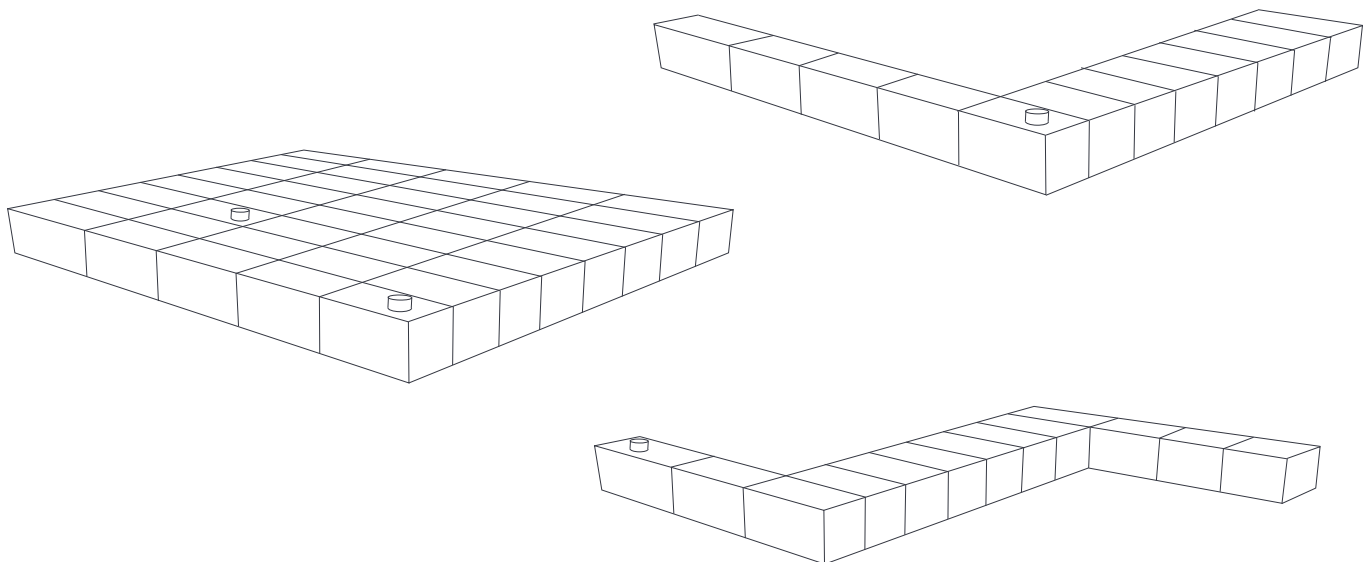
Module Sizes & Capacities

Inside Dimensions (FT)	Capacity Range (FT ³)
7x15x2	210-212
7x15x3	315-325
7x15x4	420-442
7x15x5	525-559
7x15x6	630-678
7x15x7	735-793
7x15x8	840-910

Inside Dimensions (FT)	Capacity Range (FT ³)
7x15x9	945-1,027
7x15x10	1,050-1,140
7x15x11	1,155 - 1,257
7x15x12	1,260 - 1,374
7x15x13	1,365 -1,491
7x15x14	1,470 - 1,608

Modules are 8'x16' outside dimensions.
Capacity varies by configuration of openings.

Endless Opportunities



Visit oldcastleinfrastructure.com to learn more about StormCapture, or design your StormCapture solution at stormcapturedesign.com.



www.oldcastleinfrastructure.com | (888) 965-3227

Trusted partnerships.
Full scale solutions.