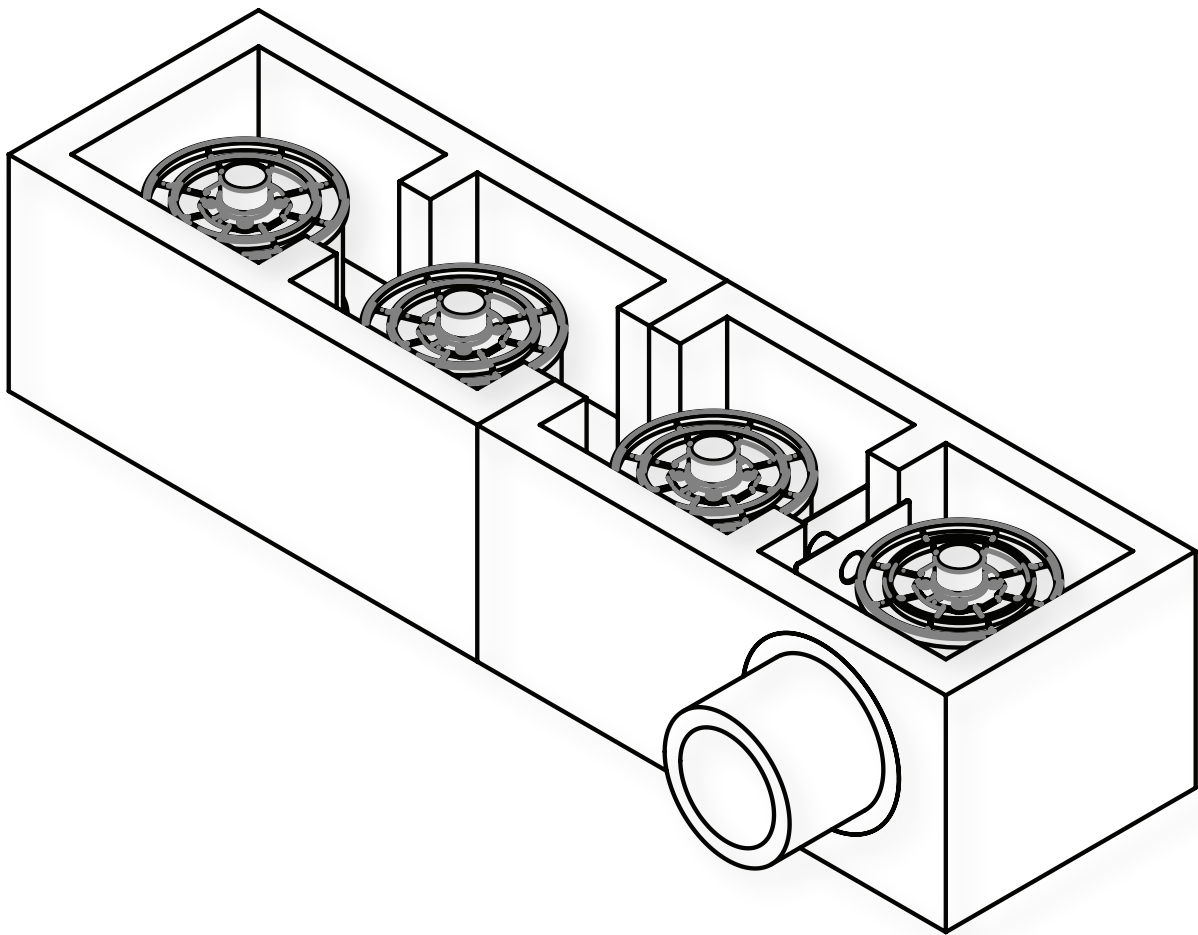


PerkFilter™

Four Cartridge Internal Assembly

Installation Guide

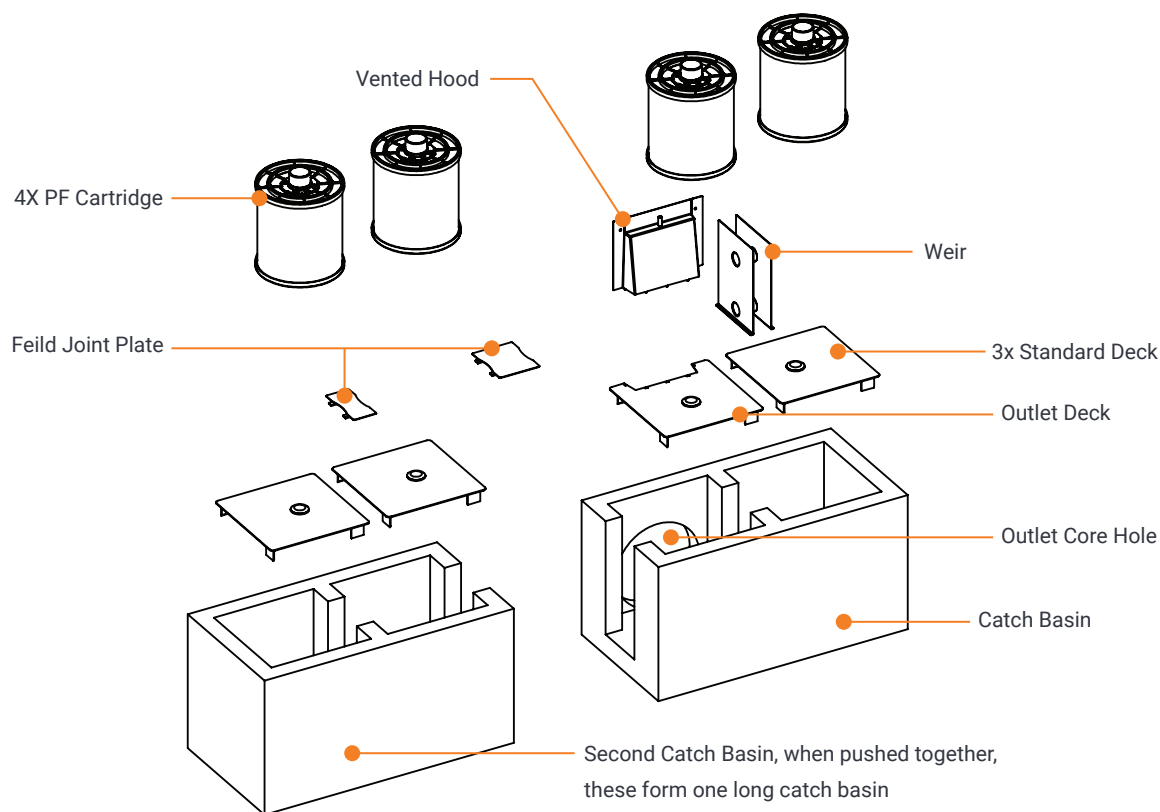


Introduction

This information is valid for PerkFilter™ Catch Basins with any height cartridge.

Parts List

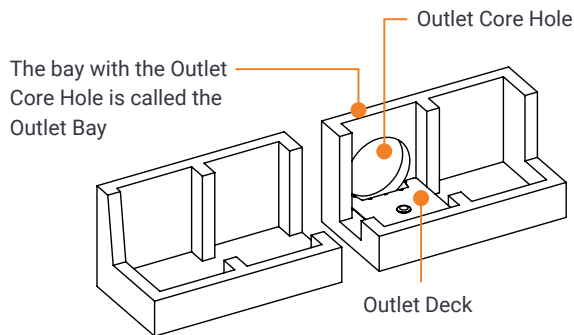
Component	Quantity
PF Cartridge	1-4
Outlet Deck	1
Standard Deck	3
Vented Hood*	1
Weir Assembly	1
Center Wall Deck Plate	1
Feild Joint Plate	1



Every PerkFilter™ Catch Basins system should have only one outlet pipe. Use the project drawing to find the outlet core hole on your system, then start step 1 below at that location.

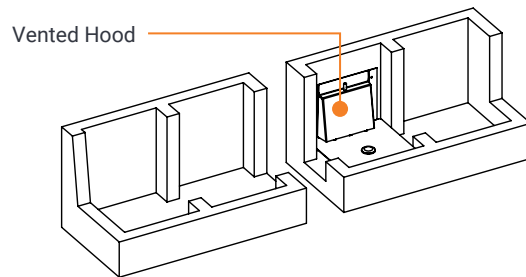
REMOVE DUST, GRAVEL & OTHER DEBRIS FROM CATCH BASIN BEFORE STARTING.

1. Set outlet deck in outlet bay with notch facing the core hole.

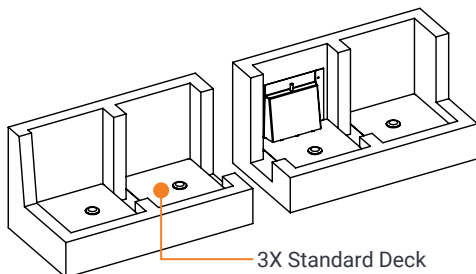


2. Cover the core hole & notch with the vented hood.

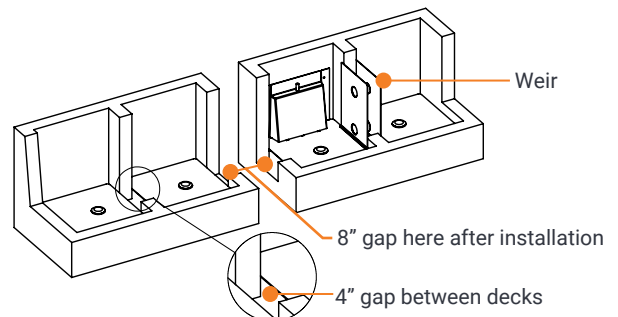
The hood tabs fit in the deck slots. Attach hood to concrete with two stainless concrete anchors thru the upper holes. Attach the vent hose (not shown).



3. Place standard decks in the other three bays.

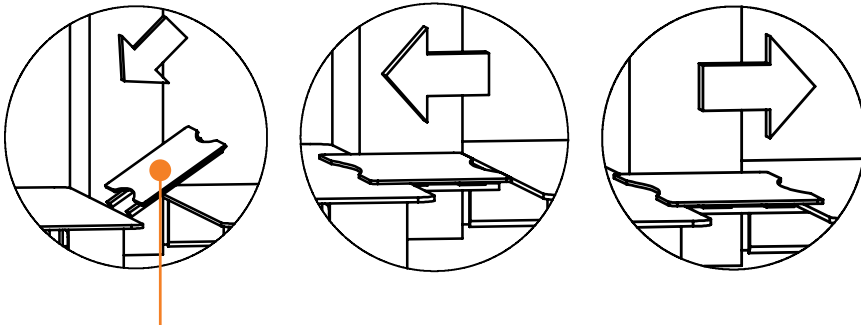


4. With flanges down, slide the weir down centered in the center wall gap until the flanges sit on both decks. If the weir doesn't stay centered, re-install it.



NOTICE There is a 4" gap between the two decks in the catch basin without the weir assembly. When the catch basins are installed, there will be an 8" gap between the units, due to the wall thickness. The precaster will install a center wall deck plate (5"x12") over the 4" gap, seen in step 5. A field joint plate (9" x 12") ships loose and is installed over the 8" gap by the field installer. The procedure to install both plates is the same, see step 5.

5. Install Center Wall Plate. Slide the long tabs of the centerwall plate under one of the decks. Flatten plate as you push as far as it will go in that direction. Pull plate back until it locks on the other deck. Sikaflex the perimeter of the plate to hold it in this position.



Center Wall Plate

6. Install Field Joint Plate. After both catch basins are set and level, slide the long tabs of the field joint plate under one of the decks. Flatten plate as you push as far as it will go in that direction. Pull plate back until it locks on the other deck. Sikaflex the perimeter of the plate to hold it in this position.



Open vault with field joint plate



Standard deck assembly



Field joint plate in position

- 7. Seal Perimeter Of Each Internal Component With Sikaflex.** Make sure to seal all the way to the top of the weir. The result should be a water tight seal between clean water below the decks & dirty water above.



Sikaflex placement

- 8. Install Cartridges.** Center the cartridge with the coupler in the floor and press the cartridge into position. Cartridge should seat firmly against the coupler. Once cartridges are installed, secure them in place with the hold down bar.



Cartridge placement with hold down bar



www.oldcastleinfrastructure.com | (888) 965-3227

Trusted partnerships.
Full scale solutions.