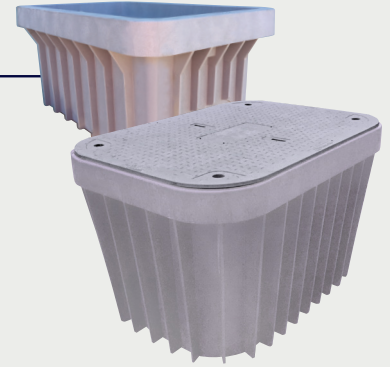


Choosing the Right Fit for Your Application

Duralite®

An intelligent blend of composite materials—high quality performance, reinforced design. Durable, lightweight bodies are easy to modify and most meet OSHA requirements for one-person lift. A lighter alternative to both polymer concrete and concrete.



BODY:

- Tier 15, Tier 22
- Open bottom easy to install conduit cables
- Fire resistant; following the ASTM D635 standards
- Smooth surface, fast drainage, less than 1% absorption to ASTM D-570
- Engineered to withstand heavy loads—the durable, single-piece body resists bowing during installation
- The unique material blend resists chipping and cracking, unlike polymer concrete
- A lighter alternative to polymer concrete and concrete
- One-person lift on many handholes

COVER:

- HDPE, Composite, and Polymer Concrete
- T-Cover and Flush
- Pedestrian, Tier 15, Tier 22
- Color options available
- Custom and standard logos available
- Slip resistant per ASTM C1028

SIZES: from 1015 to 3048

CERTIFICATION: ANSI/SCTE 77 Tier 15/Tier 22



Polymer Concrete

A mixture of gravel and sand, bound with resin and a fiberglass fabric—High flexural and tensile strength, low weight. Class 1, 140-0616 resin prevents corrosion and avoids separation or deformation of the cover or body. The material eliminates the need for grounding the cover or body and is unaffected by quick freeze or thaw conditions.



BODY:

- Tier 22
- Open bottom easy to install conduit cables
- Fire resistant; following the ASTM D635 standards
- Smooth surface, fast drainage, less than 1% absorption to ASTM D-570
- Designed to prevent damage in handling and installation
- Rib design maximizes flexural and compression strength
- A lighter alternative to concrete
- Multiple person lift


COVER:

- Polymer Concrete
- Flush
- Tier 15, Tier 22
- Polymer Concrete
- Custom and standard logos available
- Slip resistant per ASTM C1028

SIZES: from 10" round to a 4848

CERTIFICATION: ANSI/SCTE 77 Tier 15/Tier 22



 WARNING: Cancer - www.P65Warnings.ca.gov

Weighing the Benefits

Duralite® is the lightweight solution, engineered to withstand heavy loads and provide interior working space nearly identical to polymer concrete. Duralite® provides the same Tier 15 and Tier 22 performance and weighs 50–75% less.

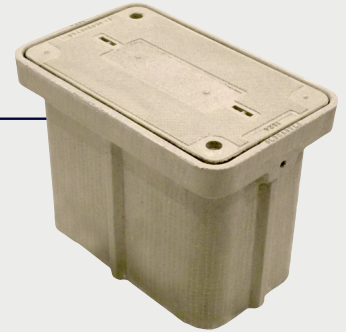
Duralite®

A lightweight alternative to polymer concrete



Polymer Concrete

A popular alternative to traditional concrete



Model	Depth	Weight (Body + Cover)	
		Tier 15	Tier 22
1015	12"	22 lbs	22 lbs
	18"	24 lbs	24 lbs
1118	12"	22 lbs	22 lbs
	18"	25 lbs	25 lbs
1212	12"	20 lbs	20 lbs
	18"	25 lbs	25 lbs
1324	12"	36 lbs	37 lbs
	18"	43 lbs	45 lbs
1730	12"	50 lbs	55 lbs
	18"	57 lbs	63 lbs
	24"	62 lbs	62 lbs
2436	18"	97 lbs	97 lbs
	24"	119 lbs	119 lbs
	36"	142 lbs	142 lbs
3048	18"	170 lbs	170 lbs
	24"	191 lbs	191 lbs
	36"	229 lbs	229 lbs

Model	Depth	Weight (Body + Cover)	
		Tier 15	Tier 22
1015	12"	N/A	N/A
	18"	N/A	N/A
1118	12"	67 lbs	75 lbs
	18"	90 lbs	98 lbs
1212	12"	48 lbs	49 lbs
1324	12"	99 lbs	99 lbs
	18"	101 lbs	101 lbs
	24"	138 lbs	138 lbs
1730	12"	145 lbs	145 lbs
	18"	176 lbs	176 lbs
	24"	199 lbs	199 lbs
	30"	246 lbs	246 lbs
2436	18"	289 lbs	289 lbs
	24"	327 lbs	327 lbs
	30"	368 lbs	368 lbs
	36"	396 lbs	396 lbs
3048	18"	408 lbs	526 lbs
	24"	454 lbs	572 lbs
	30"	521 lbs	639 lbs
	36"	527 lbs	645 lbs

Visit our website to view the full range of Polymer Concrete sizes.

How Does Duralite® Measure Up?

Duralite® is the lightweight solution providing the same Tier 15 and Tier 22 performance as polymer concrete at only half the weight. Engineered to withstand heavy loads and provide interior working space nearly identical to those made of polymer concrete.

Duralite®



Polymer Concrete



Model		Duralite®	Polymer Concrete
1015-18	Top Opening Dimensions	8.5" x 13.8"	N/A
	Bottom Opening Dimensions	6.62" x 11.87"	N/A
	Internal Volume	1749.97 in	N/A
1118-18	Top Opening Dimensions	9.7" x 16.57"	9.875" x 16.75"
	Bottom Opening Dimensions	8.13" x 15"	8.5" x 15.4"
	Internal Volume	2415.18 in ³	2395.51 in ³
1212-18	Top Opening Dimensions	11.6" x 11.6"	11.75" x 11.75"
	Bottom Opening Dimensions	9.822" x 9.822"	8.875" x 8.875"
	Internal Volume	2235 in ³	1895.48 in ³
1324-18	Top Opening Dimensions	12.17" x 21.67"	11.69" x 21.19"
	Bottom Opening Dimensions	10" x 19"	9.5" x 19"
	Internal Volume	6948.14 in ³	3524.32 in ³
1730-18	Top Opening Dimensions	15.9" x 28.9"	15.5" x 28.5"
	Bottom Opening Dimensions	13.5" x 26.5"	13.31" x 26.31"
	Internal Volume	6948.14 in ³	6423.82 in ³
2436-18	Top Opening Dimensions	21.88" x 33.63"	22" x 33.625"
	Bottom Opening Dimensions	18.375" x 30"	18.28" x 29.9"
	Internal Volume	9766 in ³	10166.82 in ³

WARNING: Cancer - www.P65Warnings.ca.gov