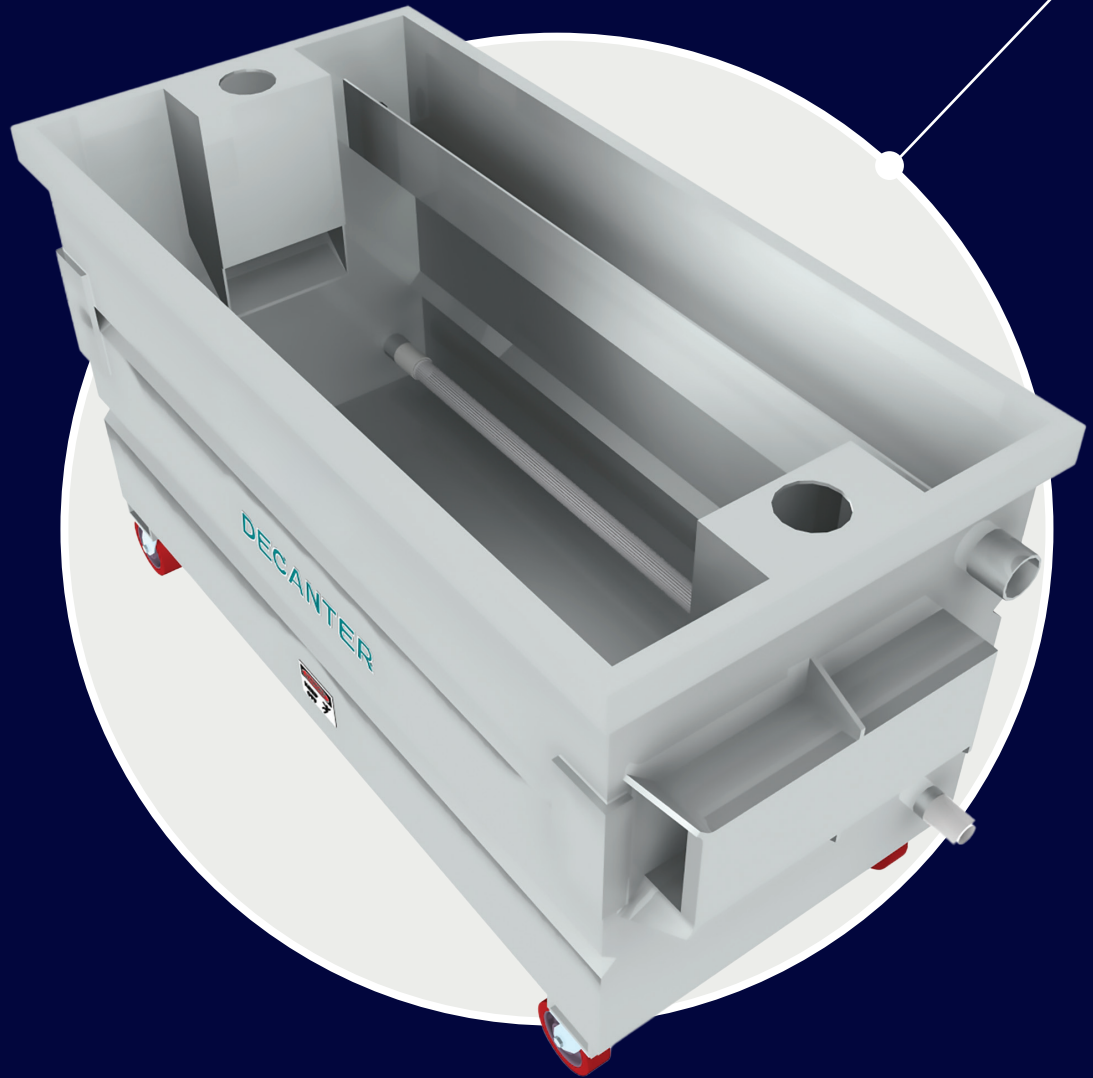


DECANTER



**Compact Batch
Grit Dewatering Bin**
Engineered by Hydro International®

Decanter

Cost-effective for smaller plants.

Engineered by Hydro International, the Decanter is the ideal solution for smaller plants to dewater washed grit output from a TeaCup®, or Grit King® unit.

The Decanter dewatering bin is a non-mechanical dewatering system designed to retain fine grit with little water content, allowing for cost-effective disposal. The system is custom-designed to match your local disposal truck configurations.

The Decanter is the ideal solution for plants with peak flows of up to 7 Mgal/d (27 MLD) for dewatering cleaned output from a TeaCup® or Grit King® separation system.

A system using the Decanter will cut energy costs and reduce the expense of replacing downstream moving parts that come into contact with abrasive grit. Additionally, durable construction ensures a long product life and reduces abrasive wear and fouling of solids handling equipment.



Performance

- Retains grit 75 micron and larger

Capacity

- Suited for smaller plant dewatering - up to 7 Mgal/d (27 MLD) peak

Applications

- Grit dewatering for municipal WWTPs
- Dewateres grit output from a TeaCup® or Grit King® unit

Benefits

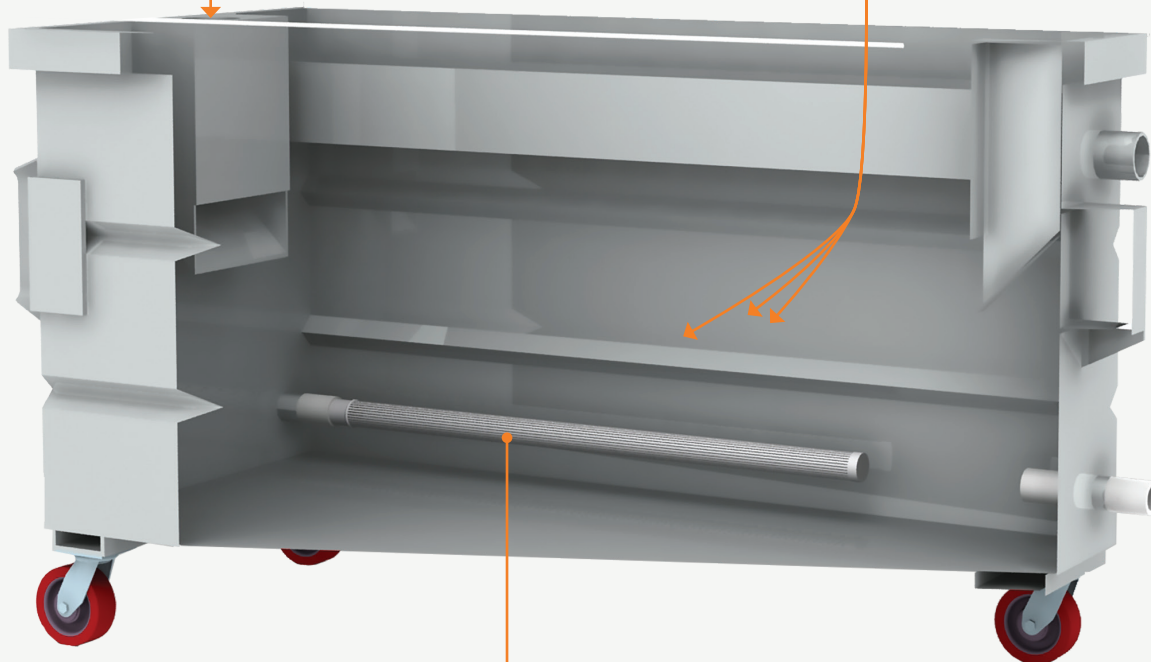
- Durable hot-dipped galvanized construction ensures a long product life
- No power requirements
- Varied configurations to match various disposal trucks

Design Notes

- Meets ANSI standards for safety & compatibility
- Cost effective alternative to conventional dewatering
- Drain connections remain closed during normal operation

Decanter Components

Configured so low organic slurry can enter on either left or right side



Wedgewire Dewatering Screen

How it Works

A grit slurry is introduced through the inlet openings which directs flow down and toward the center of the bin. Grit settles in the settling chamber and once full, the clarified, degritted water at the top overflows a weir and is directed to an effluent connection which can be directed back into the process flow.

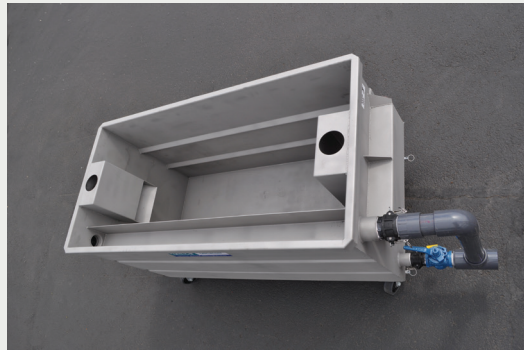
Grit accumulates at the bottom of the unit burying the stainless steel wedgewire screen. Periodically, the drain valve is opened allowing the free water to drain through the wedgewire screen and the sand bed without releasing captured grit. The bin can then be dumped and a new batch started.

When a Decanter is used in conjunction with a TeaCup®, or Grit King® grit washing system, the grit underflow requires no further washing. Degritted overflow from the Decanter can be returned to the plant for further processing.

Configurations



Front-Loading Decanter



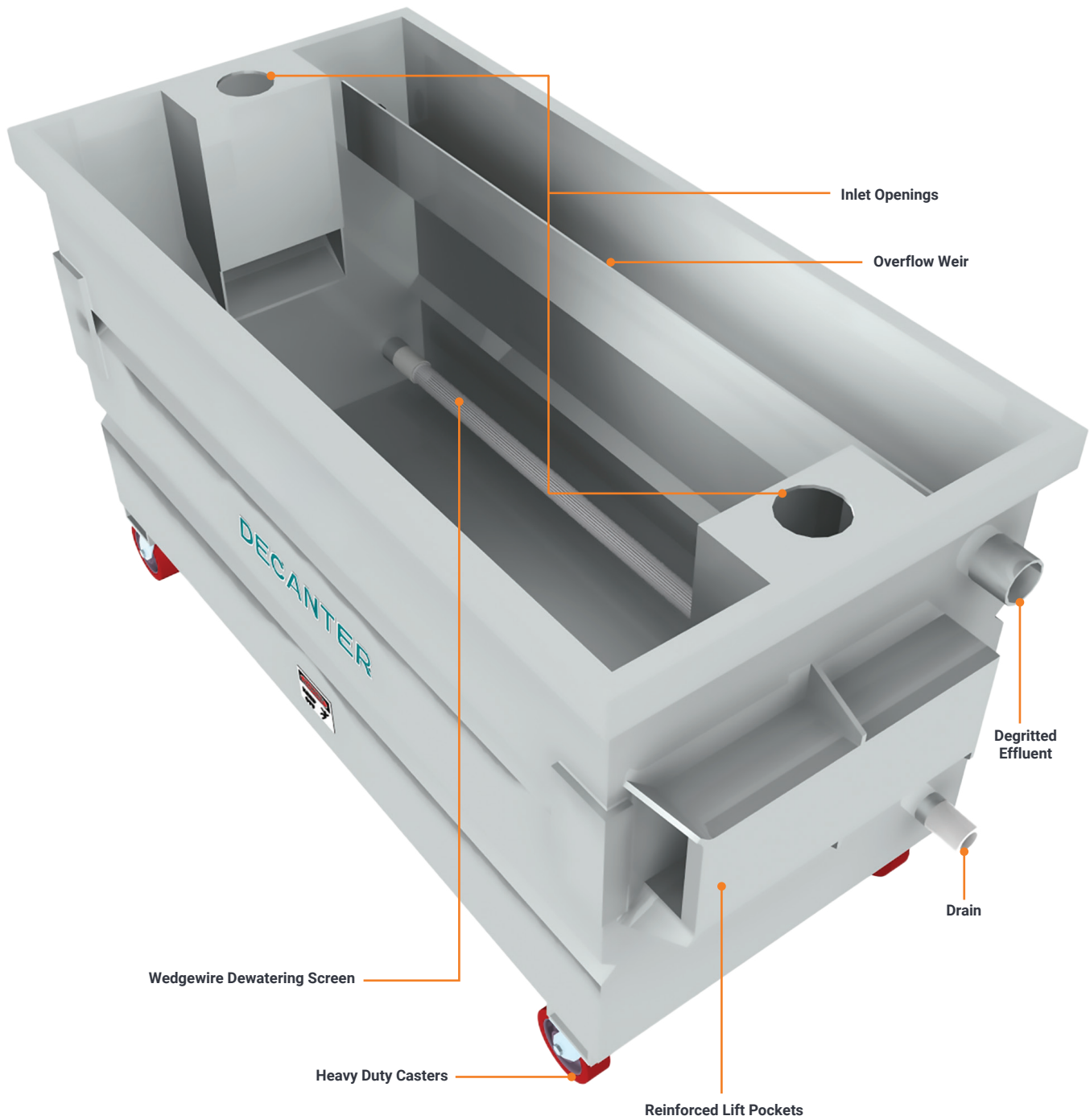
Self-Dumping Decanter



Rear-Loading Decanter



Front-Loading Decanter



Scan the QR code to visit the [Decanter](#) product page.





www.oldcastleinfrastructure.com | (888) 965-3227

Trusted partnerships.
Full scale solutions.