

OMNI Pole Base

Wet-cast and Dry-cast Options

Adjustable Hardware

Easy Installation

Standard Sizes



Wet-cast
OMNI Pole Base

Dry-cast
OMNI Pole Base

One Day
Install to Power

The OMNI universal pole base fits a variety of light poles with an adjustable bolt pattern and oversized sleeve to fit multiple conduit sizes. Traditional, cast-in-place pole foundations require significant time on-site and coordination. OMNI pole base simplifies this process by cutting out costly and time consuming steps, making it the ideal on-site solution.

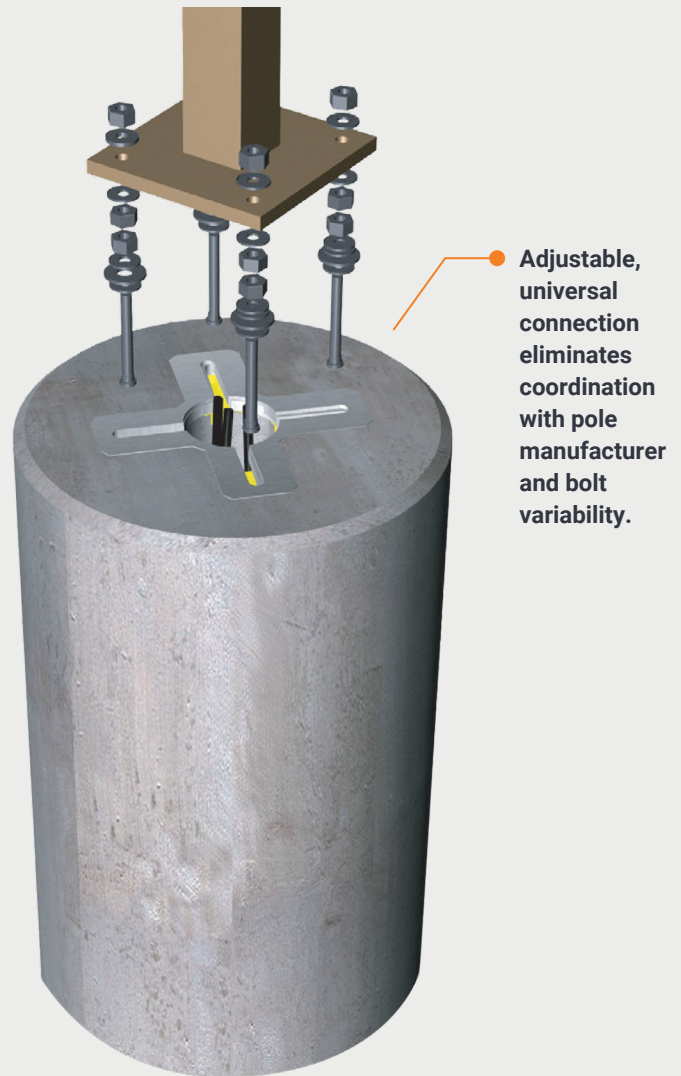
In control on the job.

Pre-packaged and ready for same-day installation, Oldcastle Infrastructure OMNI pole bases allow for a simplified installation process, eliminating the need to pour concrete on-site. These universal pole bases are engineered to meet minimum concrete strengths and include a conduit raceway core and anchor bolts. OMNI pole bases are available in a variety of depths with a bolt pattern that adjusts to fit the specifications of your poles.

- 24" diameter pole base.
- 7', 8', 9', and 10' lengths available.
- Adjustable bolt pattern (7 1/2" to 11") for a universal fit with pre-packaged bolts, nuts and washer assemblies.
- Oversized sleeves accommodate multiple conduit sizes.

Maximum Pole Height Chart (ft)

		Bolt Circle (in)			
		8"	9"	10"	11"
4 SF EPA	4" Round	37'	39'	42'	37'
	5" Round	34'	36'	38'	34'
	6" Round	31'	34'	36'	32'
	4" Square	32'	34'	37'	33'
	5" Square	29'	32'	34'	30'
	6" Square	27'	29'	31'	28'
6 SF EPA	4" Round	33'	35'	38'	35'
	5" Round	31'	33'	35'	31'
	6" Round	29'	31'	33'	29'
	4" Square	28'	31'	33'	29'
	5" Square	26'	28'	31'	27'
	6" Square	25'	27'	29'	25'
8 SF EPA	4" Round	30'	32'	34'	30'
	5" Round	28'	30'	32'	28'
	6" Round	26'	28'	30'	27'
	4" Square	25'	27'	29'	26'
	5" Square	24'	26'	28'	24'
	6" Square	22'	24'	26'	23'



4-A-050 Revision 6/2024

Trusted partnerships.
Full scale solutions.



www.oldcastleinfrastructure.com | (888) 965-3227