

# OMNI Pole Base

Adjustable Hardware

Easy Installation

Standard Sizes



OMNI Pole Bases\*

**One Day  
Install to Power**

The OMNI universal pole base fits a variety of light poles with an adjustable bolt pattern and oversized sleeve to fit multiple conduit sizes. Traditional, cast-in-place pole foundations require significant time on-site and coordination. OMNI pole base simplifies this process by cutting out costly and time consuming steps, making it the ideal on-site solution.

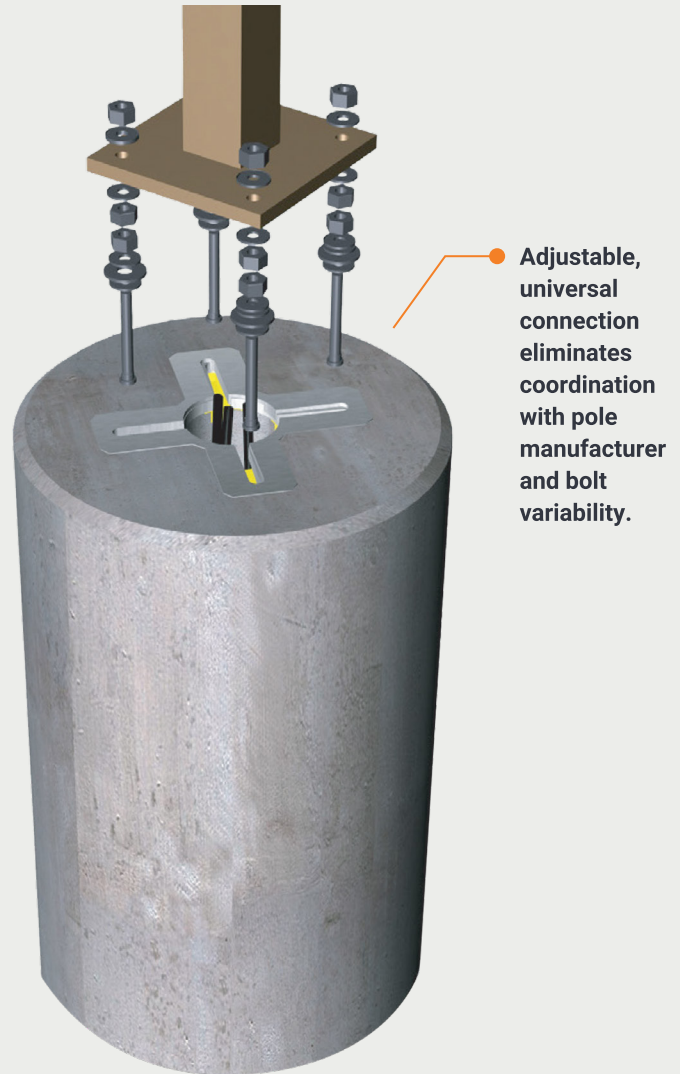
# In control on the job.

Pre-packaged and ready for same-day installation, Oldcastle Infrastructure OMNI pole bases allow for a simplified installation process, eliminating the need to pour concrete on-site. These universal pole bases are engineered to meet minimum concrete strengths and include a conduit raceway core and anchor bolts. OMNI pole bases are available in a variety of depths with a bolt pattern that adjusts to fit the specifications of your poles.

- 24" diameter pole base.
- 7', 8', 9', and 10' lengths available.
- Adjustable bolt pattern (7 1/2" to 11") for a universal fit with pre-packaged bolts, nuts and washer assemblies.
- Oversized sleeves accommodate multiple conduit sizes.

Maximum Pole Height Chart (ft)

|             |           | Bolt Circle (in) |     |     |     |
|-------------|-----------|------------------|-----|-----|-----|
|             | Pole Type | 8"               | 9"  | 10" | 11" |
| 4 SF<br>EPA | 4" Round  | 37'              | 39' | 42' | 37' |
|             | 5" Round  | 34'              | 36' | 38' | 34' |
|             | 6" Round  | 31'              | 34' | 36' | 32' |
|             | 4" Square | 32'              | 34' | 37' | 33' |
|             | 5" Square | 29'              | 32' | 34' | 30' |
|             | 6" Square | 27'              | 29' | 31' | 28' |
| 6 SF<br>EPA | 4" Round  | 33'              | 35' | 38' | 35' |
|             | 5" Round  | 31'              | 33' | 35' | 31' |
|             | 6" Round  | 29'              | 31' | 33' | 29' |
|             | 4" Square | 28'              | 31' | 33' | 29' |
|             | 5" Square | 26'              | 28' | 31' | 27' |
|             | 6" Square | 25'              | 27' | 29' | 25' |
| 8 SF<br>EPA | 4" Round  | 30'              | 32' | 34' | 30' |
|             | 5" Round  | 28'              | 30' | 32' | 28' |
|             | 6" Round  | 26'              | 28' | 30' | 27' |
|             | 4" Square | 25'              | 27' | 29' | 26' |
|             | 5" Square | 24'              | 26' | 28' | 24' |
|             | 6" Square | 22'              | 24' | 26' | 23' |



4-A-050 Revision 4/2025

Trusted partnerships.  
Full scale solutions.



[www.oldcastleinfrastructure.com](http://www.oldcastleinfrastructure.com) | (888) 965-3227