

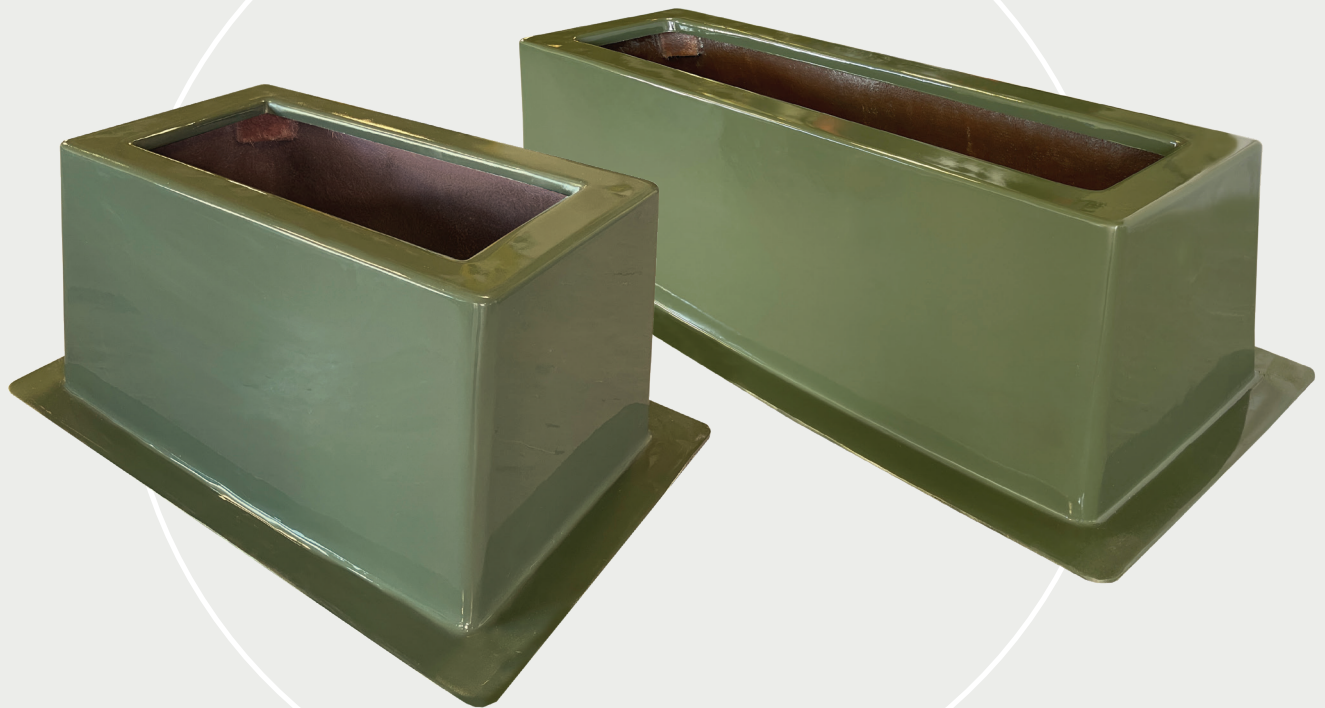
# Highline<sup>®</sup>

## Ground Sleeves

Lightweight and Strong

Durable Construction

Easy Installation



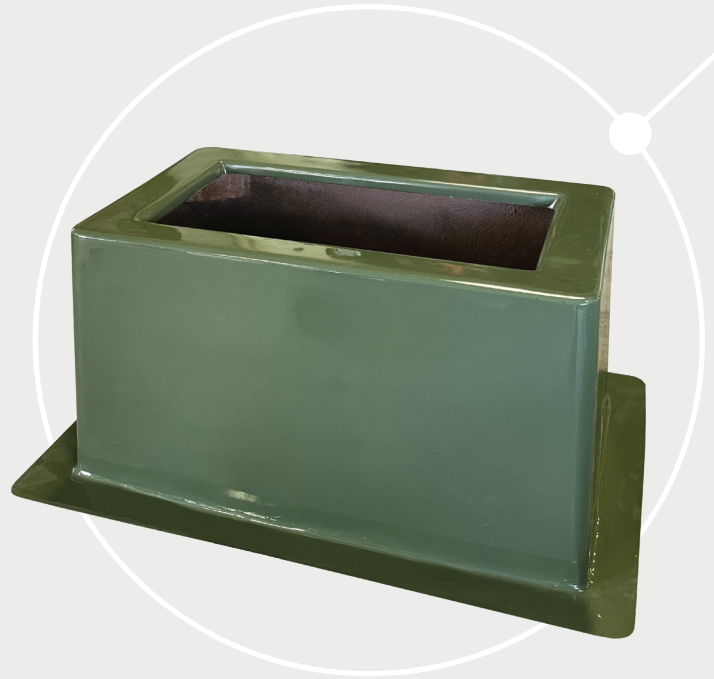
**Dependable  
Foundations**

Oldcastle Infrastructure offers easy-to-install fiberglass foundations for sectionalizing cabinets, primary switchgear, metering pedestals, and other utility-grade equipment. Our spray-up/lay-up fiberglass manufacturing process results in lightweight, strong, and durable products that reduce storage and shipping requirements.

# Dependable Foundations.

## Features and Benefits

- The smooth, gel-coated exterior surface is tamper, UV, and corrosion resistant, ensuring that our ground sleeves will not deteriorate in the outdoor elements.
- The heavy-duty fiberglass structure is reinforced to avoid deflection when buried, providing an opening for field personnel to work in.
- Stress areas are strengthened with reinforcing materials to prevent wear and tear.
- On larger models, external ribs are molded into all sides for greater sidewall and vertical strength.
- A base flange provides excellent stability in the buried position and is engineered to provide the most strength possible.



4-A-106 Revision 10/2025

Trusted partnerships.  
Full scale solutions.



[www.oldcastleinfrastructure.com](http://www.oldcastleinfrastructure.com) | (888) 965-3227