



Oldcastle Infrastructure™
A CRH COMPANY



Normandy Fittings

V-Series - Solvent Weld DR35 Sewer

An aerial photograph of a city skyline at sunset. In the foreground, a complex multi-level highway interchange with several overpasses and ramps is visible, with a few cars driving on it. The middle ground shows a dense urban area with various buildings. In the background, three prominent skyscrapers stand out against the hazy, orange-tinted sky of the setting sun.

WE STAND TOGETHER TO

R E I N V E N T

T H E W A Y

O U R W O R L D

I S B U I L T

Table of Contents

INTRODUCTION	PG
Company Purpose Statement	2
Table of Contents	3
About Oldcastle Infrastructure Fittings	4
Series Specifications	5
 FITTINGS PRODUCTS	
Bends	6-7
Wyes	7
Tees	7-8
Couplings	8-9
Adapters and Bushings	9-10
All Other Products	10-11

Fit for Success

Oldcastle Infrastructure is trusted by engineers, contractors, and utility owners to deliver quality infrastructure products locally and nationally, meeting industry specifications and project timelines. Our nationwide technical, representative, and distribution network is reliable and supportive. Questions are answered, technical support is readily available, and orders are fulfilled on time and in full.



Excellence in Design Our pipe fittings are rigorously engineered with the precision required to manufacture and deliver the uniformity, durability, tolerances, and certifications our clients require for their mission critical projects.



Delivering at Scale Oldcastle Infrastructure is a part of CRH, the largest building material supplier in both North America and Europe. This allows us to leverage our existing production and distribution networks to produce and deliver a consistent product offering at a large scale and allowing us to deliver product faster and keep our distributors supplied and rapidly restocked.



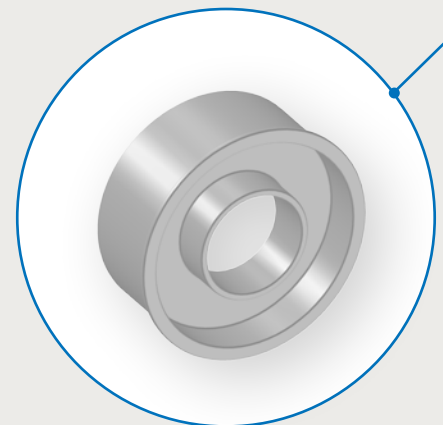
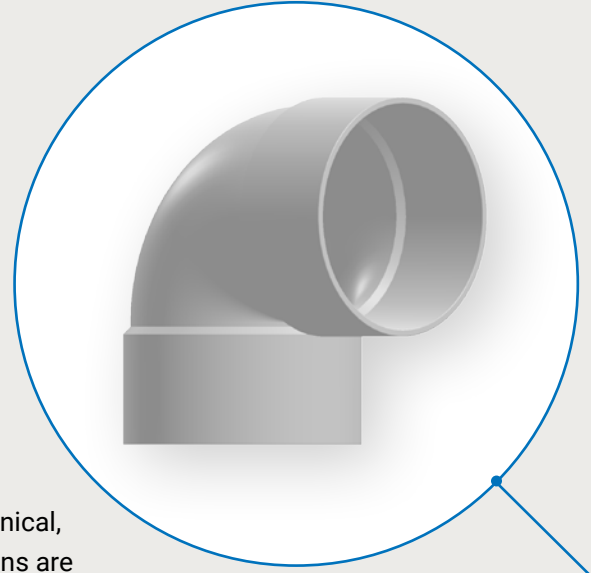
Testing & Certifications All of Oldcastle Infrastructure's pipe fittings are thoroughly tested to ensure that they meet our customer's needs in even the most demanding applications. We go above and beyond required state, federal, municipal, industrial specifications to ensure our fittings have the durability, connectivity, and longevity that our products are known for.

The Fittings Industry Just Got Stronger

We're not just providing the highest-quality and most consistent line of fittings. We're giving you the trusted reliability, unmatched service, and decades of expertise you deserve. Because when your reputation is on the line, you need more than just a fitting. You need confidence in every connection.



Oldcastle Infrastructure[™]
A CRH COMPANY



V-Series

Solvent Weld DR35 Sewer Fittings

Our V-series sewer fittings are designed for ease of installation providing the durability needed in demanding sewer connection projects.

Oldcastle Infrastructure's V-Series injection molded fittings are used in sewer and septic disposal systems and engineered systems for wastewater and surface water drainage. In addition, uses include sanitary and stormwater sewer connections and household uses such as foundation and yard drainage.

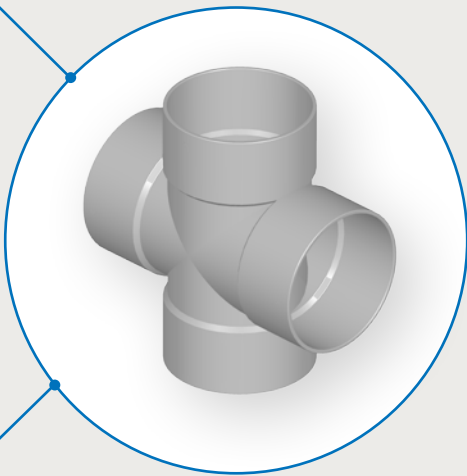
Technical Info

Available Sizes

3" - 8" Diameters

Applications

Oldcastle Infrastructure's V-Series injection molded fittings are used in sewer and septic disposal systems and engineered systems for wastewater and surface water drainage where lines are generally buried at less than 14'. In addition, uses include sanitary and stormwater sewer connections and household uses such as foundation and yard drainage.

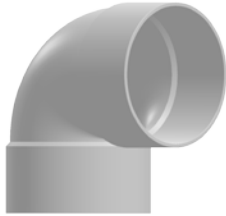


V Series

DR35 Solvent Weld PVC Fittings

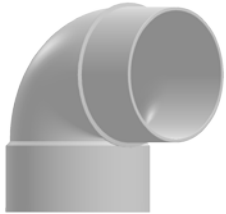
Sewer

1/4 Bend (90° H x H Vent Short)



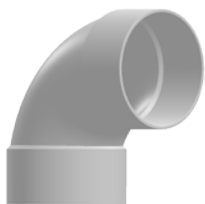
Part #	Size (in)	Carton
V-3303	3 x 3	25
V-3304	4 x 4	25
V-306	6 x 6	12

1/4 Bend (90° S x H Vent Short)



Part #	Size (in)	Carton
V-3404	4 x 4	25
V-406	6 x 6	12

1/4 Bend (90° H x H Sweep Long)



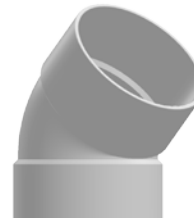
Part #	Size (in)	Carton
V-303	3 x 3	25
V-304	4 x 4	36
V-366	6 x 6	8

1/4 Bend (90° H x S Sweep Long)



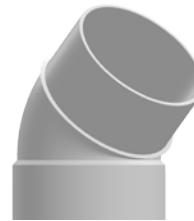
Part #	Size (in)	Carton
V-403	3 x 3	25
V-404	4 x 4	36
V-466	6 x 6	8

1/8 Bend (45° H x H)



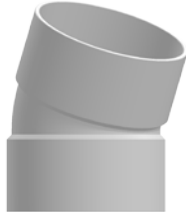
Part #	Size (in)	Carton
V-503	3 x 3	30
V-504	4 x 4	60
V-506	6 x 6	18

1/8 Bend (45° Street Ell H x S)



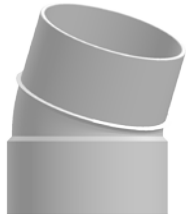
Part #	Size (in)	Carton
V-603	3 x 3	30
V-604	4 x 4	60
V-606	6 x 6	18

1/16 Bend (22.5° H x H)



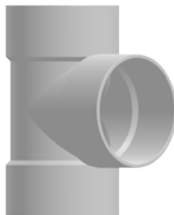
Part #	Size (in)	Carton
V-703	3 x 3	25
V-704	4 x 4	30
V-706	6 x 6	20

1/16 Bend (22.5° Street Ell H x S)



Part #	Size (in)	Carton
V-713	3 x 3	25
V-714	4 x 4	30
V-716	6 x 6	20

Straight Tee (H x H x H)



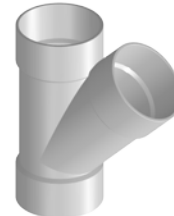
Part #	Size (in)	Carton
V-803	3 x 3 x 3	30
V-804	4 x 4 x 4	30
V-8064	6 x 6 x 4	5
V-806	6 x 6 x 6	8

Cleanout Tee (H x H x FPT)



Part #	Size (in)	Carton
V-8804	4 x 4 x 4	15

45° Wye (H x H x H)



Part #	Size (in)	Carton
V-903	3 x 3 x 3	32
V-904	4 x 4 x 4	24
V-9064	6 x 6 x 4	8
V-906	6 x 6 x 6	6

Sanitary Tee (H x H x H)



Part #	Size (in)	Carton
V-1103	3 x 3 x 3	24
V-1104	4 x 4 x 4	25
V-11064	6 x 6 x 4	5
V-1106	6 x 6 x 6	6

V Series

DR35 Solvent Weld PVC Fittings

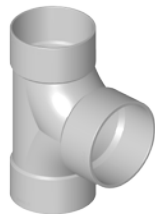
Sewer

Two-Way Cleanout (H x H x H)



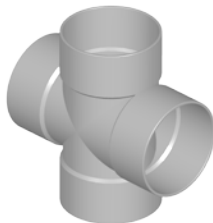
Part #	Size (in)	Carton
V-2204	4 x 4 x 4	10

Two-Way Cleanout (H x DWVH x H)



Part #	Size (in)	Carton
V-2214	4 x 4 x 4	10

Cross (H x H x H x H)



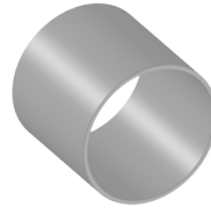
Part #	Size (in)	Carton
V-1304	4 x 4 x 4 x 4	24

Coupling (H x H)



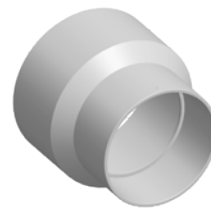
Part #	Size (in)	Carton
V-103	3 x 3	50
V-104	4 x 4	50
V-106	6 x 6	24
V-108	8 x 8	4

Repair Coupling (H x H No Stop)



Part #	Size (in)	Carton
V-144	4 x 4	30

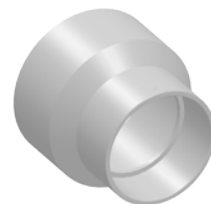
Reducer Coupling (H x H)



Part #	Size (in)	Carton
V-1043	4 x 3	40
V-1064	6 x 4	24
V-1064T*	6 x 4	15
V-1084	8 x 4	8
V-1086	8 x 6	8

* Tapered

Adapter Coupling (H x DWVH)



Part #	Size (in)	Carton
V-2043	4 x 3	40
V-2044	4 x 4	25
V-2046	4 x 6	24
V-2046T*	4 x 6	15
V-2066	6 x 6	12

*Tapered

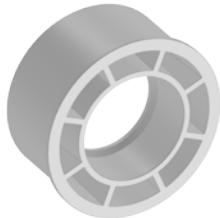
NOTE: Adapter fits over the spigot end of a sewer pipe to enable transition to DWV pipe

Coupling DWV Schedule 40 (DWVH x DWVH)



Part #	Size (in)	Carton
D-104	4 x 4	40

Reducer Bushing (Flush S x H)



Part #	Size (in)	Carton
V-1143	4 x 3	25

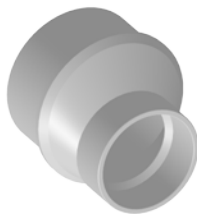
Reducer Bushing (S x H)



Part #	Size (in)	Carton
V-2064	6 x 4	24
V-2084	8 x 4	8
V-2086	8 x 6	8

NOTE: Adapter fits into sewer hub and allows for connection to sewer pipe

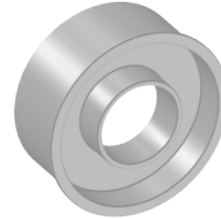
Eccentric Reducer Bushing (S x H)



Part #	Size (in)	Carton
V-2164	6 x 4	15

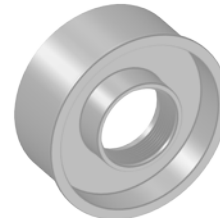
NOTE: Adapter fits into sewer hub and allows for connection to sewer pipe

Adapter Bushing (S x DWVH)



Part #	Size (in)	Carton
V-1031	3 x 1-1/2	25
V-1041	4 x 1-1/2	25
V-1042	4 x 2	25

Threaded Adapter Bushing (S x FPT)



Part #	Size (in)	Carton
V-2031	3 x 1-1/2	25
V-2041	4 x 1-1/2	25

Bushing DWV Adapter Sleeve (DWVS x H)



Part #	Size (in)	Carton
V-3033	3 x 3	25
V-3044	4 x 4	25
V-3066	6 x 6	10

NOTE: Adapter fits into D/W/V hub and allows for transition to sewer pipe

V Series

DR35 Solvent Weld PVC Fittings

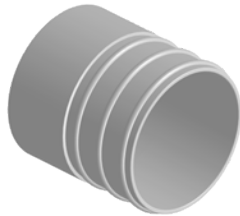
Sewer

Adapter Bushings (S x DWVH)



Part #	Size (in)	Carton
V-2644	4 x 4	24
V-2664	6 x 4	12
V-2666	6 x 6	12

Corrugated Adapter (S x CI)



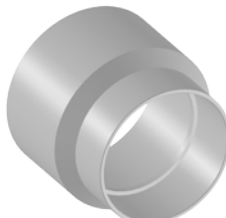
Part #	Size (in)	Carton
V-44	4 x 4	60

Clay Adapter (H x Clay Spigot)



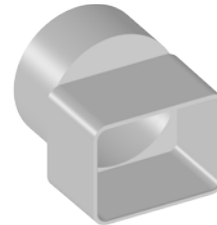
Part #	Size (in)	Carton
V-1504	4 x 4	24

Cast Iron Adapter (H x Cast Iron Spigot)



Part #	Size (in)	Carton
V-1604	4 x 4	24

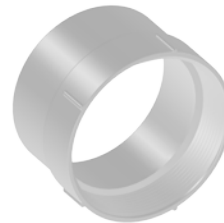
Offset Flush-fit Downspout Adapter (DS x H)



Part #	Size (in)	Carton
V-1713	2 x 3 x 3	24
V-1714	2 x 3 x 4	25
V-1715	3 x 4 x 4	25
V-1706	4 x 6 x 6	18

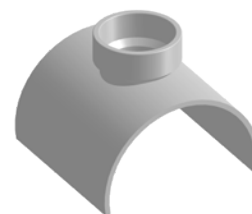
NOTE: The first two dimensions are the sizes of the downspout square, the third dimension is the sewer pipe

Female Adapter (H x FPT)



Part #	Size (in)	Carton
V-2103	3 x 3	24
V-2104	4 x 4	24
V-2106	6 x 6	12

Saddle Tee (DWV HUB x S&D PIPE)



Part #	Size (in)	Carton
V-1204	1-1/2 x 4	25

Fitting Cleanout (Sewer Spigot x FPT)



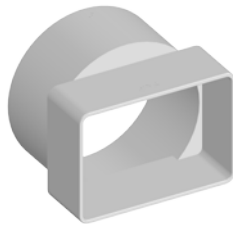
Part #	Size (in)	Carton
V-1903	3 x 3	40
V-1904	4 x 4	20
V-1906	6 x 6	12

Drain Grate (S)



Part #	Size (in)	Carton
V-1803	3	50
V-1804	4	40
V-1806	6	25

Downspout Adapter (DS x H)



Part #	Size (in)	Carton
V-1703	2 x 3 x 3	50
V-1704	2 x 3 x 4	50
V-1705	3 x 4 x 4	25

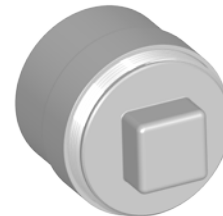
NOTE: The first two dimensions are the sizes of the downspout hub, the third dimension is the sewer pipe

Countersunk Plug (MPT Thread)



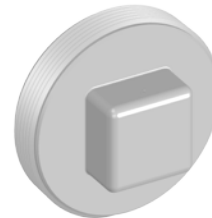
Part #	Size (in)	Carton
V-2016	6	12

Fitting Cleanout (with Plug)



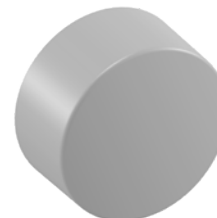
Part #	Size (in)	Carton
V-1924	4	50

Plug (MPT Thread)



Part #	Size (in)	Carton
V-2003	3	50
V-2004	4	50
V-2006	6	12

Cap (H)



Part #	Size (in)	Carton
V-1403	3	30
V-1404	4	30
V-1406	6	24
V-1408	8	10

NOTE: Fits over the spigot end of sewer pipe

