



**Oldcastle** Infrastructure™  
A CRH COMPANY



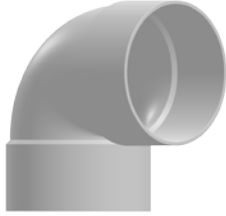
# Price List

**Normandy V-Series - Solvent Weld PVC DR35 Sewer Fittings**

# Normandy V-Series

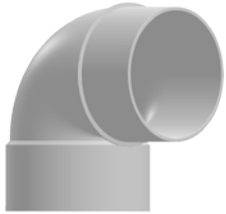
## Solvent Weld PVC DR35 Sewer Fittings

### 1/4 Bend (90° H x H Vent Short)



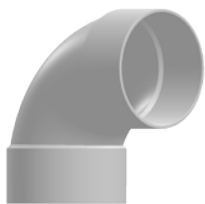
Part #	Size (in)	Carton	Price
V-3303	3 x 3	25	\$ 15.15
V-3304	4 x 4	25	\$ 19.09
V-306	6 x 6	12	\$ 64.82

### 1/4 Bend (90° S x H Vent Short)



Part #	Size (in)	Carton	Price
V-3404	4 x 4	25	\$ 25.49
V-406	6 x 6	12	\$ 95.62

### 1/4 Bend (90° H x H Sweep Long)



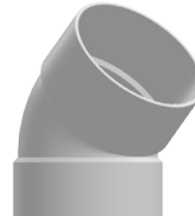
Part #	Size (in)	Carton	Price
V-303	3 x 3	25	\$ 18.85
V-304	4 x 4	36	\$ 20.00
V-366	6 x 6	8	\$ 115.51

### 1/4 Bend (90° H x S Sweep Long)



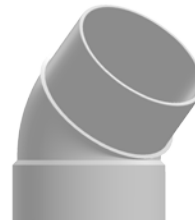
Part #	Size (in)	Carton	Price
V-403	3 x 3	25	\$ 21.91
V-404	4 x 4	36	\$ 24.70
V-466	6 x 6	8	\$ 215.13

### 1/8 Bend (45° H x H)



Part #	Size (in)	Carton	Price
V-503	3 x 3	30	\$ 12.93
V-504	4 x 4	60	\$ 13.45
V-506	6 x 6	18	\$ 65.84

### 1/8 Bend (45° Street Ell H x S)

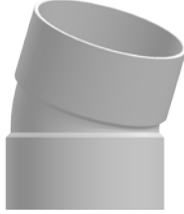


Part #	Size (in)	Carton	Price
V-603	3 x 3	30	\$ 15.15
V-604	4 x 4	60	\$ 15.67
V-606	6 x 6	18	\$ 72.98

# Normandy V-Series

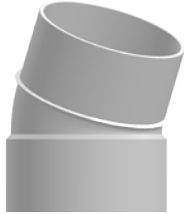
## Solvent Weld PVC DR35 Sewer Fittings

### 1/16 Bend (22.5° H x H)



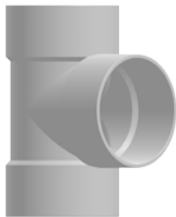
Part #	Size (in)	Carton	Price
V-703	3 x 3	25	\$ 17.95
V-704	4 x 4	30	\$ 20.00
V-706	6 x 6	20	\$ 71.78

### 1/16 Bend (22.5° Street Ell H x S)



Part #	Size (in)	Carton	Price
V-713	3 x 3	25	\$ 20.00
V-714	4 x 4	30	\$ 21.15
V-716	6 x 6	20	\$ 79.77

### Straight Tee (H x H x H)



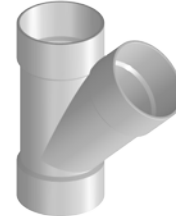
Part #	Size (in)	Carton	Price
V-803	3 x 3 x 3	30	\$ 17.10
V-804	4 x 4 x 4	30	\$ 22.74
V-8064	6 x 6 x 4	5	\$ 87.68
V-806	6 x 6 x 6	8	\$ 95.62

### Cleanout Tee (H x H x FPT)



Part #	Size (in)	Carton	Price
V-8804	4 x 4 x 4	15	\$ 55.85

### 45° Wye (H x H x H)



Part #	Size (in)	Carton	Price
V-903	3 x 3 x 3	32	\$ 27.60
V-904	4 x 4 x 4	24	\$ 33.14
V-9064	6 x 6 x 4	8	\$ 111.56
V-906	6 x 6 x 6	6	\$ 135.50

### Sanitary Tee (H x H x H)



Part #	Size (in)	Carton	Price
V-1103	3 x 3 x 3	24	\$ 23.12
V-1104	4 x 4 x 4	25	\$ 31.59
V-11064	6 x 6 x 4	5	\$ 163.17
V-1106	6 x 6 x 6	6	\$ 199.21

# Normandy V-Series

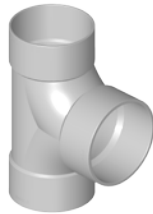
## Solvent Weld PVC DR35 Sewer Fittings

### Two-Way Cleanout (H x H x H)



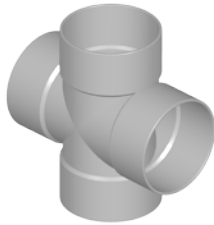
Part #	Size (in)	Carton	Price
V-2204	4 x 4 x 4	10	\$ 65.08

### Two-Way Cleanout (H x DWVH x H)



Part #	Size (in)	Carton	Price
V-2214	4 x 4 x 4	10	\$ 117.58

### Cross (H x H x H x H)



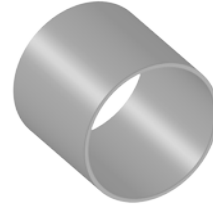
Part #	Size (in)	Carton	Price
V-1304	4 x 4 x 4 x 4	24	\$ 61.85

### Coupling (H x H)



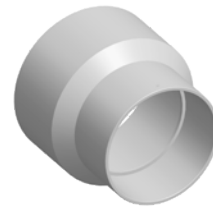
Part #	Size (in)	Carton	Price
V-103	3 x 3	50	\$ 9.63
V-104	4 x 4	50	\$ 11.61
V-106	6 x 6	24	\$ 42.99
V-108	8 x 8	4	\$ 139.04

### Repair Coupling (H x H No Stop)



Part #	Size (in)	Carton	Price
V-144	4 x 4	30	\$ 14.21

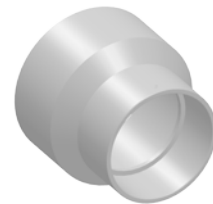
### Reducer Coupling (H x H)



Part #	Size (in)	Carton	Price
V-1043	4 x 3	40	\$ 18.37
V-1064	6 x 4	24	\$ 57.82
V-1064T*	6 x 4	15	\$ 60.70
V-1084	8 x 4	8	\$ 254.05
V-1086	8 x 6	8	\$ 267.66

\* Tapered

### Adapter Coupling (H x DWVH)



Part #	Size (in)	Carton	Price
V-2043	4 x 3	40	\$ 21.62
V-2044	4 x 4	25	\$ 28.74
V-2046	4 x 6	24	\$ 70.57
V-2046T*	4 x 6	15	\$ 74.11
V-2066	6 x 6	12	\$ 95.50

\*Tapered

NOTE: Adapter fits over the spigot end of a sewer pipe to enable transition to DWV pipe

# Normandy V-Series

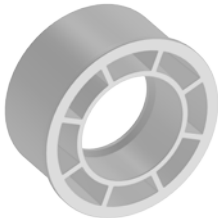
## Solvent Weld PVC DR35 Sewer Fittings

### Coupling DWV Schedule 40 (DWHV x DWHV)



Part #	Size (in)	Carton	Price
D-104	4 x 4	40	\$ 21.91

### Reducer Bushing (Flush S x H)



Part #	Size (in)	Carton	Price
V-1143	4 x 3	25	\$ 21.96

### Reducer Bushing (S x H)



Part #	Size (in)	Carton	Price
V-2064	6 x 4	24	\$ 56.79
V-2084	8 x 4	8	\$ 200.23
V-2086	8 x 6	8	\$ 207.96

NOTE: Adapter fits into sewer hub and allows for connection to sewer pipe

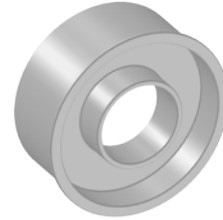
### Eccentric Reducer Bushing (S x H)



Part #	Size (in)	Carton	Price
V-2164	6 x 4	15	\$ 63.99

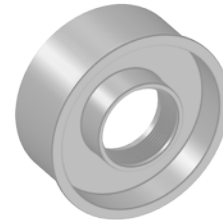
NOTE: Adapter fits into sewer hub and allows for connection to sewer pipe

### Adapter Bushing (S x DWHV)



Part #	Size (in)	Carton	Price
V-1031	3 x 1-1/2	25	\$ 26.95
V-1041	4 x 1-1/2	25	\$ 35.93
V-1042	4 x 2	25	\$ 35.93

### Threaded Adapter Bushing (S x FPT)



Part #	Size (in)	Carton	Price
V-2031	3 x 1-1/2	25	\$ 26.95
V-2041	4 x 1-1/2	25	\$ 35.93

### Bushing DWV Adapter Sleeve (DWVS x H)



Part #	Carton	Price	Carton
V-3033	3 x 3	25	\$ 22.41
V-3044	4 x 4	25	\$ 22.41
V-3066	6 x 6	10	\$ 88.94

NOTE: Adapter fits into D/W/V hub and allows for transition to sewer pipe

# Normandy V-Series

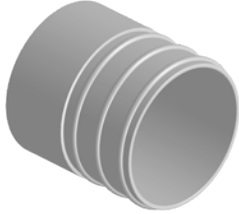
## Solvent Weld PVC DR35 Sewer Fittings

### Adapter Bushings (S x DWVH)



Part #	Size (in)	Carton	Price
V-2644	4 x 4	24	\$ 41.11
V-2664	6 x 4	12	\$ 70.94
V-2666	6 x 6	12	\$ 91.33

### Corrugated Adapter (S x CI)



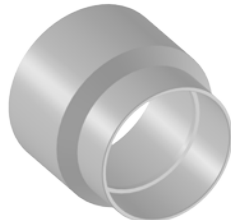
Part #	Size (in)	Carton	Price
V-44	4 x 4	60	\$ 21.00

### Clay Adapter (H x Clay Spigot)



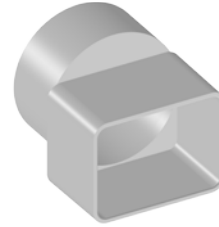
Part #	Size (in)	Carton	Price
V-1504	4 x 4	24	\$ 55.85

### Cast Iron Adapter (H x Cast Iron Spigot)



Part #	Size (in)	Carton	Price
V-1604	4 x 4	24	\$ 55.85

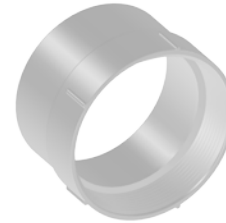
### Offset Flush-fit Downspout Adapter (DS x H)



Part #	Size (in)	Carton	Price
V-1713	2 x 3 x 3	24	\$ 19.09
V-1714	2 x 3 x 4	25	\$ 17.95
V-1715	3 x 4 x 4	25	\$ 25.26
V-1706	4 x 6 x 6	15	\$ 103.55

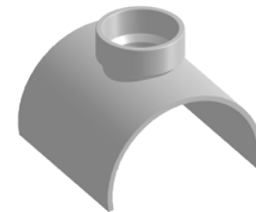
NOTE: The first two dimensions are the sizes of the downspout square, the third dimension is the sewer pipe

### Female Adapter (H x FPT)



Part #	Size (in)	Carton	Price
V-2103	3 x 3	24	\$ 23.92
V-2104	4 x 4	24	\$ 23.18
V-2106	6 x 6	12	\$ 87.41

### Saddle Tee (DWV HUB x S&D PIPE)



Part #	Size (in)	Carton	Price
V-1204	1-1/2 x 4	25	\$ 39.82

# Normandy V-Series

## Solvent Weld PVC DR35 Sewer Fittings

### Fitting Cleanout (Sewer Spigot x FPT)



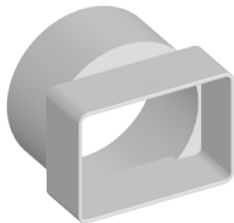
Part #	Size (in)	Carton	Price
V-1903	3 x 3	40	\$ 17.95
V-1904	4 x 4	20	\$ 17.95
V-1906	6 x 6	12	\$ 87.68

### Drain Grate (S)



Part #	Size (in)	Carton	Price
V-1803	3	50	\$ 11.20
V-1804	4	40	\$ 14.01
V-1806	6	25	\$ 61.85

### Downspout Adapter (DS x H)



Part #	Size (in)	Carton	Price
V-1703	2 x 3 x 3	50	\$ 19.09
V-1704	2 x 3 x 4	50	\$ 17.95
V-1705	3 x 4 x 4	25	\$ 20.33

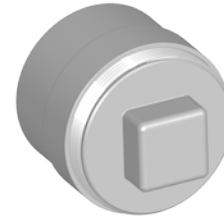
NOTE: The first two dimensions are the sizes of the downspout hub, the third dimension is the sewer pipe

### Countersunk Plug (MPT Thread)



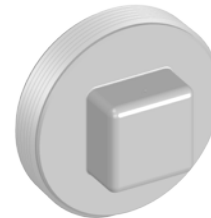
Part #	Size (in)	Carton	Price
V-2016	6	12	\$ 86.84

### Fitting Cleanout (with Plug)



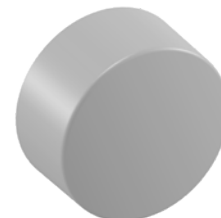
Part #	Size (in)	Carton	Price
V-1924	4	50	\$ 29.16

### Plug (MPT Thread)



Part #	Size (in)	Carton	Price
V-2003	3	50	\$ 10.79
V-2004	4	50	\$ 11.20
V-2006	6	12	\$ 55.43

### Cap (H)



Part #	Size (in)	Carton	Price
V1403	3	30	\$ 8.09
V1404	4	30	\$ 9.26
V1406	6	24	\$ 37.82
V1408	8	10	\$ 130.70

NOTE: Fits over the spigot end of sewer pipe

# Normandy V-Series

## Solvent Weld PVC DR35 Sewer Fittings

### Terms and Conditions of Sale

PLEASE INSPECT SHIPMENTS PRIOR TO SIGNING.

To facilitate prompt resolution of issues, any damages or discrepancies must be noted and photographed on the receipt or Bill of Lading at the time of delivery. Customer Service must be notified of freight damages within 48 hours of receipt, and shipment shortages within 7 days of receipt.

### Notification of BABA Requirements

Before placing an order, please inform us of Build America, Buy America (BABA) project requirements. This includes product certifications, country of origin, iron and steel content limitations, and domestic preference requirements.

### Returns

Custom and Made-to-Order (MTO) items are non-returnable and non-cancellable once a purchase order (PO) has been processed. Returned stock goods are subject to a minimum restocking fee of 25%. An RGA form must be obtained and approved through Customer Service to initiate a return. Return windows for Inwesco metal and Primex products are within 2 months of the invoice date. All other products are within 6 months of the invoice date. Returned products must be in saleable condition.

### Sales Order & Quote Pricing

Sales order pricing is valid for shipments within 30 days of order acceptance and may be subject to change prior to shipment. Quotation pricing is valid for 30 days unless otherwise specified. Pricing is based on the specified items and quantities in the quote, and discrepancies between the quote and purchase order will not be the responsibility of the seller.

### Fees

A \$ 50 broken pallet charge applies for products sold in quantities less than a full pallet, except for Primex, Inwesco, and Normandy brand products. Lift gate requirements incur a \$ 200 fee per occurrence. Drop shipments are subject to a \$ 150 fee, or \$ 400 if the order typically ships on a route truck. Shipping location changes after dispatch will incur a \$ 250 reconsignment charge and may involve additional freight fees. Prepaid freight shipments are at the manufacturer's discretion, with special requests charged to the customer.

### Minimum Order and Quantity Requirements

Orders under \$ 500 are subject to a minimum order fee of \$ 75. Stock and MTO items have a minimum quantity requirement of 5 pieces per order (or full pallet), whereas Custom items are 10 pieces per line item. These requirements do not apply to Primex and Inwesco metal products.

### Order Holds and Restocking

Orders placed on hold at the customer's request or will-call orders not picked up or delivered within 15 days may be subject to restocking fees.

# Normandy V-Series

## Solvent Weld PVC DR35 Sewer Fittings

### Jobsite Deliveries

Requires our prior approval with site contact information and GPS coordinates.

### Partial Shipments

Orders are typically held to ship complete unless a partial shipment is requested at order entry, the order is shipping on a route truck, or the order is for Inwesco metal products. Partial shipments may incur additional freight fees.

### Payment Terms

Credit card payments are accepted at the time of invoicing. A surcharge, not exceeding the cost of acceptance, is applied to credit card transactions. No surcharge applies to ACH or debit card transactions.

### Tax Charges

Final tax charges are calculated at invoicing, as federal, state, and local taxes may change between order entry and invoicing.

### Return Policy

- We will assess a minimum of 25% restocking charge on all standard returned goods
- We require a \$ 100 minimum on all returns
- Return requests must be made within 6 months of receiving the items
- All custom orders and MTO items are Non-Returnable and Non-Cancellable
- Customer must ship material back to the shipping DC

