

Utility Distribution

Highline Energy Products

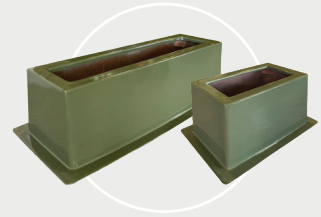
Transformer Box Pads

Lightweight fiberglass box pads for single-phase and three-phase transformers. Available products include our HL Series of compression molded fiberglass and our FBP and FSG-RT Series of spray-up/lay-up fiberglass and woven cloth.



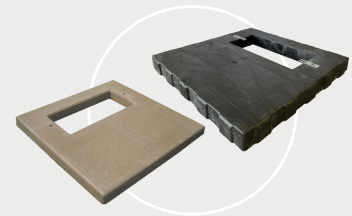
Switchgear Pads, Ground Sleeves, and Metering Pedestals

Easy-to-install fiberglass foundations for sectionalizing cabinets, primary switchgear, metering pedestals and other utility-grade equipment. Our spray-up/lay-up manufacturing process results in lightweight, strong, and durable products that nest for reduced storage and shipping requirements.



Transformer Flat Pads

Polymer concrete pads are strong, durable foundations for single-phase or three-phase pad-mounted transformers and a superior, lightweight option to concrete pads. HDPE pads are available for single-phase transformers and are extremely lightweight without compromising strength.



Sectionalizing Cabinets

Lightweight, durably-constructed fiberglass cabinets manufactured with our spray-up/lay-up process. External ribs and step design provide rigidity for single-phase, three-phase, and deferral cabinets. Cabinets are fire and corrosion resistant and can be supplied with junctions and delivered ready for installation.



Secondary Pedestals

HDPE injection molded structural foam pedestals have superior side wall and top loading strength, are lightweight, easy-to-handle, and UV stabilized. Some units available with pre-installed connectors. Our FSP Series are heavy-duty reinforced fiberglass with strengthened stress areas and locking hardware with optional locking service entrances available.



Pole Top Extensions

Filament-wound fiberglass epoxy extensions that are UV resistant with excellent weatherability and exceed strength requirements of class 2-10 wood poles. Available from 36" to 120" with galvanized steel mount that accommodates pole diameters of 6" to 12". Ideal alternative to pole replacement and a great solution for wireless 5G and communication antennas.



Underground Enclosures

Handholes | Access boxes | Splice boxes | Pull boxes | Vaults

Carson®

High-density polyethylene (HDPE) enclosures deliver reliable, chemical and water resistant performance and install with ease. Available in a wide variety of sizes and preferred and specified by industry professionals nationwide.

  Pedestrian • Tier 8



Oldcastle FRP

Fiberglass reinforced polymer enclosures use a unique hybrid process that bonds strong, polymer concrete rings with high-impact resistant fiberglass sidewalls to form a monolithic body. Specifiers can meet load ratings while installers can handle and modify with ease.

 Tier 15



Duralite®

Composite enclosures are manufactured with an intelligent mix of composite materials to provide unexpected Tier 15 and Tier 22 load rating performance in the lightweight enclosure category. More than 50% lighter than polymer concrete.

  Tier 15 • Tier 22



Oldcastle Polymer

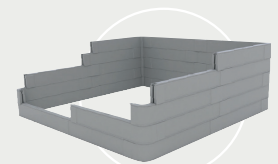
Polymer concrete enclosures deliver strength and durability at a fraction of the weight of concrete. These enclosures provide medium to heavy duty solutions in a wide range of sizes and configurations to meet your application needs.

  Tier 15 • Tier 22



STAKKAbox™ ULTIMA Connect

A modular access vault system built on-site with lightweight, easily-connectable corner pieces and scalable sidewall lengths that are configurable to your specifications. Modifications are made during assembly allowing installation around infrastructure without disconnecting services. Works seamlessly with the MODUcover frame and cover system for a complete, in-stock solution that ships flat, assembles around existing infrastructure and can install in one day.



Trusted partnerships.
Full scale solutions.



www.oldcastleinfrastructure.com | (888) 965-3227