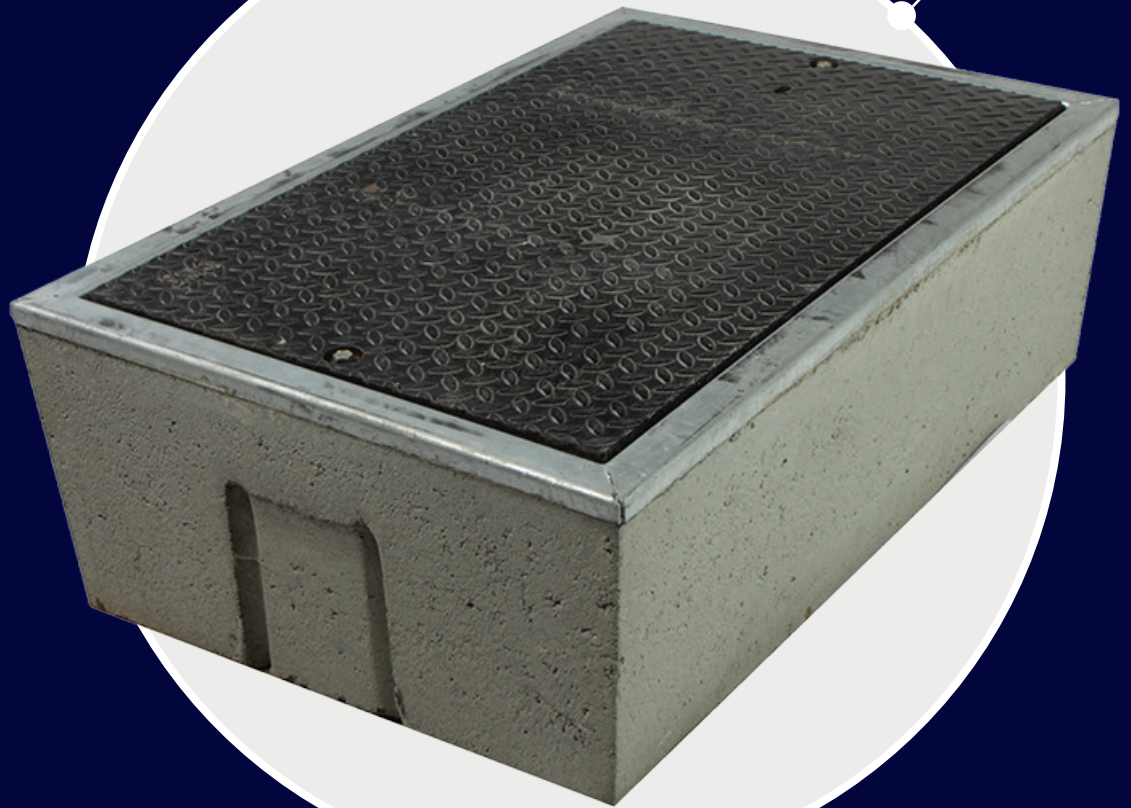


Christy[®]



**Maximum Reliability.
Minimal Cost.**



Protection **below the surface.**

Designed as a flexible solution for a range of applications, Christy® concrete products have delivered reliable, cost-effective utility market solutions for more than 40 years. From easy-access hand holes to steel-reinforced enclosures, the innovative, dynamic engineering of the Christy line affords maximized strength and extreme durability.

At Oldcastle Infrastructure, our focus is on creating innovative solutions to fit our customers precise needs.





Strong

Christy® concrete products are engineered and rigorously tested to assure high-performance durability in areas of both high vehicular and non-deliberate traffic.



Variety of Sizes

A wide range of models and sizes are available to fit the requirements of your project.



Durable

Proven compressive strength and durability provide reliability in a variety of applications.



BABA Compliant

Domestically produced cast iron and steel covers are available to help meet BABA compliance requirements.



Easily Modified

Contractors and installers can make access modifications quickly and easily in the field.



Model	Size (LxW)	Shape	Depths	Performance
F08	8" Dia	Round	12"	ANSI/SCTE 77 Non-deliberate Traffic
B03	9" x 14"	Rectangle	12"	
B09/N09	10" x 15"		12", [24]", [36]"	
B12	12" x 18"		12", [24]", [36]"	
B16 / N16	11" x 21"		12", [24]", [36]"	
B65	15" x 27"		12", [24]", [36]"	
B24	18" x 19"		12", [24]", [36]"	
B30 / N30	13" x 24"		12", [24]", [36]"	
B36 / N36	17" x 30"		12", [24]", [36]"	
N40	24" x 36"		12", [24]", [36]"	
N48	30" x 48"		12", [24]", [36]"	AASHTO HS20-44 Deliberate Traffic
N52	30" x 60"	12", [24]", [36]"		
G03	10" Dia	Round	12"	
G04	11" Tri		12"	
G05	11" Dia		12", [24]", [36]"	
G08	11" Dia		12", [24]", [36]"	
G12	13" Dia		12"	
B1017	10" x 17"	Rectangle	12", [24]", [36]"	
B1324	13" x 24"		12", [24]", [36]"	
B1730	17" x 30"		12", [24]", [36]"	
B2436	24" x 36"		12", [24]", [36]"	
B3048	30" x 48"		12", [24]", [36]"	

Material	Concrete with Reinforced Ring and Cover / Concrete with Steel Frame and Steel Cover
Wall Type	Straight
Performance	ANSI/SCTE 77 - 3K / AASHTO HS20-44
Rating	Non-deliberate traffic / Deliberate traffic

Dimensions may vary slightly.
KEY: [#] Requires an extension unit.



www.oldcastleinfrastructure.com | (888) 965-3227

Trusted partnerships.
Full scale solutions.